

SPR 2022

62nd Annual Meeting

Vancouver

British Columbia • Canada

**September 28-
October 2**

Hyatt Regency Hotel



Final Program

PSYCHOPHYSIOLOGY

THE INTERNATIONAL JOURNAL OF THE
SOCIETY FOR PSYCHOPHYSIOLOGICAL RESEARCH

Editor in Chief

Monica Fabiani

University of Illinois at Urbana-Champaign

Senior Editors

Bruce D. Bartholow
University of Missouri, USA
Lisa Gatzke-Kopp
Pennsylvania State University, USA
János Horváth
Hungarian Academy of Sciences, Budapest, Hungary
J. Richard Jennings
University of Pittsburgh, USA
Andreas Keil
University of Florida, USA

Dan Foti
Purdue University, USA
Brian Gordon
Washington University in St Louis, USA
Greg Hajcak
Florida State University, USA
Erin A. Hazlett
Icahn School of Medicine at Mount Sinai, USA
Ursula Hess
Humboldt University, Germany
Frini Karayanidis
University of Newcastle, Australia
Sarah Laszlo
Google Research, USA
Chia-Lin (Charlene) Lee
National Taiwan University, Taiwan
Annmarie MacNamara
Texas A&M University, USA

John J. McDonald
Simon Fraser University, Canada
Lisa McTeague
Medical University of South Carolina, USA
Stephan Moratti
University of Madrid, Spain
Sander Nieuwenhuis
Universiteit Leiden, The Netherlands
Cristina Ottaviani
University of Rome La Sapienza, Italy
Ilse Van Diest
Katholieke Universiteit Leuven, Belgium
Nathan Weisz
Paris-Lodron Universität Salzburg, Austria
Anna Whittaker (Phillips)
University of Birmingham, UK

Associate Editors

Mustafa al'Absi
University of Minnesota Medical School, USA
Vincent Costa
Oregon Health & Science University, USA

SOCIETY FOR PSYCHOPHYSIOLOGICAL RESEARCH
An international society that fosters research relating psychology and physiology.

Officers

President: Markus Ullsperger
Past-President: Bruce Bartholow
President-Elect: Andreas Keil

Secretary: Rebecca Siltton
Treasurer: Erin Hazlett

Board of Directors

Dan Foti
Lisa Gatzke-Kopp
Frini Karayanidis

Elizabeth Page-Gould
Anna Weinberg
Matthias Wieser

§Anna Finley
§Cindy Yee-Bradbury

Standing Committee Chairs

Archives John Allen
Bylaws Rebecca Houston
Student Interests Anna Finley
Convention Sites Tanja Endrass
Distinguished Contributions
Award Markus Ullsperger
Diversity & Outreach Frini Karayanidis & Lisa Gatzke-Kopp
Early Career Award Eddie Harmon-Jones
Education and Training Dan Foti
Ethical Principles Karen Quigley
Fellows Committee Kara Federmeier
Finance Erin Hazlett

Membership Sylvia Kreibig
Nomination Ursula Hess
Program Jan Wessel
Publication Cindy Yee-Bradbury
Public Relations Nicole Roberts
Student Poster Award Bruce Bartholow
WISE Edelyn Verona
Ad Hoc Website Jens Foell
Liaison to AAAS Francis Gabbay
Liaison to FABBS Bruce Bartholow
Liaison to Societies Consortium on Sexual Harassment Edelyn Verona

Editorial Office: Monica Fabiani, Dept. of Psychology and Beckman Institute, University of Illinois at Urbana-Champaign, 2151 Beckman Institute, 405 N. Mathews Ave., Urbana, IL 61801, USA. e-mail: mfabiani@illinois.edu

Management Office: Society for Psychophysiological Research, 2424 American Lane, Madison, WI 53704, USA. Telephone: (608) 443-2472. Fax: (608) 443-2478. e-mail: info@sprweb.org. The Home Page of the Society for Psychophysiological Research can be found at www.sprweb.org.

Information for subscribers

Psychophysiology is published in 12 issues per year. Institutional subscription prices for 2022 are: Online: US\$1010.00(US), US\$1558.00 (Rest of World), €1,010.00 (Europe), £800.00 (UK). Prices are exclusive of tax. Asia-Pacific GST, Canadian GST/HST and European VAT will be applied at the appropriate rates. For more information on current tax rates, please go to <https://onlinelibrary.wiley.com/library-info/products/price-lists/payment>. The price includes online access to the current and all online backfiles to January 1st 2018, where available. For other pricing options, including access information and terms and conditions, please visit <https://onlinelibrary.wiley.com/library-info/products/price-lists>. Terms of use can be found here: <https://onlinelibrary.wiley.com/terms-and-conditions>

Delivery Terms and Legal Title

Where the subscription price includes print issues and delivery is to the recipient's address, delivery terms are Delivered at Place (DAP); the recipient is responsible for paying any import duty or taxes. Title to all issues transfers Free of Board (FOB) our shipping point, freight prepaid. We will endeavour to fulfil claims for missing or damaged copies within six months of publication, within our reasonable discretion and subject to availability.

Copyright and Copying (In Any Format): Copyright © 2022 by the Society for Psychophysiological Research. All rights reserved. No part of this publication may be reproduced, stored or transmitted in any form or by any means without the prior permission in writing from the copyright holder. Authorization to copy items for internal and personal use is granted by the copyright holder for libraries and other users registered with their local Reproduction Rights Organisation (RRO), e.g. Copyright Clearance Center (CCC), 222 Rosewood Drive, Danvers, MA 01923, USA (www.copyright.com), provided the appropriate fee is paid directly to the RRO. This consent does not extend to other kinds of copying such as copying for general distribution, for advertising or promotional purposes, for creating new collective works or for resale. Special requests should be addressed to: permissions@wiley.com.

Disclaimer: The Publisher, Society and Editors cannot be held responsible for errors or any consequences arising from the use of information contained in this journal; the views and opinions expressed do not necessarily reflect those of the Publisher, Society and Editors, neither does the publication of advertisements constitute any endorsement by the Publisher, and Editors of the products advertised.

Psychophysiology is a member of the Neuroscience Peer Review Consortium. The Consortium is an alliance of neuroscience journals that have agreed to accept manuscript reviews from each other. If you submit a revision of your manuscript to another Consortium journal, we can forward the reviews of your manuscript to that journal, should you decide this might be helpful. You can find a list of Consortium journals and details about forwarding reviews at <http://nprc.incf.org>.



PSYCHOPHYSIOLOGY

THE INTERNATIONAL JOURNAL OF THE
SOCIETY FOR PSYCHOPHYSIOLOGICAL RESEARCH

Consulting Editors

John Allen
University of Arizona, USA

Pamela Baess
University of Hildesheim, Germany

Francisco Barcelo
Universitat Illes Balears, Spain

Gershon Ben-Shakhar
The Hebrew University of Jerusalem, Israel

Gary Berntson
The Ohio State University, USA

Terry Blumenthal
Wake Forest University, USA

Lauren Bylsma
University of Pittsburgh, USA

Donna Coch
Dartmouth College, USA

Rebecca Compton
Haverford College, USA

Paul Corballis
University of Auckland, New Zealand

Seana Coulson
University of California, San Diego, USA

Elise Dan-Glauser
University of Lausanne, Switzerland

Danielle Dickson
University of Texas at San Antonio, USA

Connie Duncan
Uniformed Services University of the Health Sciences, USA

Elizabeth Duval
University of Michigan, USA

Nicola Ferdinand
Saarland University, Germany

Judith Ford
University of California, San Francisco, USA

Frances Gabbay
Uniformed Services University of the Health Sciences, USA

Courtney Gallen
University of California, San Francisco, USA

Susan Girdler
University of North Carolina at Chapel Hill, USA

Diane Gooding
University of Wisconsin-Madison, USA

Stephanie Gorka
The Ohio State University, USA

Gabriele Gratton
University of Illinois at Urbana-Champaign, USA

Steven Hackley
University of Missouri – Columbia, USA

Alfons Hamm
University of Greifswald, Germany

Eddie Harmon-Jones
The University of New South Wales, Australia

Johannes Hewig
Julius-Maximilians-Universität Würzburg, Germany

Phillip Holcomb
San Diego State University, USA

Emily Kappenman
San Diego State University, USA

Motohiro Kimura
National Institute of Advanced Industrial Science and Technology, Japan

Julian Koenig
Heidelberg University, Germany

Yasunori Kotani
Tokyo Institute of Technology, Japan

Jutta Kray
Saarland University, Germany

Olave Krigolson
University of Victoria, Canada

Jennifer Kubota
New York University, USA

Peter Lang
University of Florida, USA

Christine Larson
University of Wisconsin – Milwaukee, USA

Sheng Li
Peking University, China

Ottmar Lipp
Curtin University, Australia

Sebastian Ludyga
University of Basel, Switzerland

Hiroaki Masaki
Waseda University, Japan

Kyle Mathewson
University of Alberta, Canada

Patricia T. Michie
University of Newcastle, Australia

Gregory A. Miller
University of California, Los Angeles, USA

Jeff Miller
University of Otago, New Zealand

Jason Moser
Michigan State University, USA

Brady Nelson
Stony Brook University, USA

Nathan Parks
University of Arkansas, USA

Christopher Patrick
Florida State University, USA

Trevor Penney
The Chinese University of Hong Kong, China

Daniela M. Pfabigan
University of Oslo, Norway

Matthew Pontifex
Michigan State University, USA

Karen Quigley
Northeastern University, USA

Nicola Sambuco
University of Bologna, Italy

Anna Schubö
Philipps-University Marburg, Germany

Jennifer Stewart
City University of New York, USA

Julian Thayer
The Ohio State University, USA

Anton Van Boxtel
Tilburg University, The Netherlands

Rolf Verleger
University of Luebeck, Germany

Scott Vrana
Virginia Commonwealth University, USA

Anna Weinberg
McGill University, Canada

Mathias Weymar
University of Potsdam, Germany

Cindy Yee-Bradbury
University of California, Los Angeles, USA

ABSTRACT**FINAL PROGRAM****SOCIETY FOR PSYCHOPHYSIOLOGICAL RESEARCH**

62nd Hybrid Annual Meeting.
 Hyatt Regency Hotel.
 Vancouver, British Columbia, Canada.
 September 28–October 2, 2022.

Table of Contents

Program Committee	S3
Board of Directors	S4
Poster Sessions	S11
Registration	S11
Announcements	S11
Mobile App	S12
Publication of Abstracts	S12
Special Interest Breakfasts, Luncheons, and Dinners	S13
Exhibitors	S14
Future Annual Meetings	S14
Speaker Ready Room	S13
Meeting Rooms	S15
Committees	S5
Historical Rosters	S6
Pre-Conference Workshops	S17
Program	S17



<https://twitter.com/TheRealSPR>

<https://www.facebook.com/SocietyforPsychophysiologicalResearch>

<https://www.instagram.com/therealspr/>

Society for Psychophysiological Research

Founded in 1960, the Society for Psychophysiological Research is an international scientific society with worldwide membership. The purpose of the Society is to foster research on the interrelationships between the physiological and psychological aspects of behavior. To promote this purpose, the Society publishes scientific literature, including the journal, *Psychophysiology*, and holds annual meetings for presentation and discussion of original theory and research, instrumentation and methodology, and new directions and standards in the field.

2022 Program Committee

Jan Wessel (2022 Program Chair).

Dan Foti, Purdue University (2019–21 Program Chair)
 Marta Andreatta, Erasmus University Rotterdam (2023 Program Chair)
 Travis Baker, Rutgers University (2022 Symposia Chair)
 Jim Cavanagh, University of New Mexico
 Yu-Chin Chiu, Purdue University
 Ellen De Bruijn, Leiden University
 Darcy Diesburg, University of Iowa (2022 Big Idea and Poster Chair)
 Gabriele Gratton, University of Illinois, Urbana-Champaign
 Kristi Hendrickson, University of Iowa
 Hsu-Wen Huang, Chinese University of Hong Kong
 Vera Jandackova, University of Ostrava
 Frini Karaynidis, University of Newcastle
 Hause Lin, University of Toronto
 Jason Moser, Michigan State University
 Gilles Pourtois, Ghent University
 Anja Riesel, Humboldt-Universität zu Berlin
 Annekathrin Schacht, University of Goettingen
 Marco Steinhauser, Katholische Universität Eichstätt
 Virginia Sturm, University of California, San Francisco
 Jakub Szewczyk, University of Illinois, Urbana-Champaign
 Robert Whelan, Trinity College Dublin

Officers

President
 Markus Ullsperger, Otto von Guericke University (2021–22)
 Past President
 Bruce D. Bartholow, University of Missouri, Columbia (2021–22)
 President-Elect
 Andreas Keil, University of Florida (2021–22)
 Secretary
 Rebecca Levin Siltan, Loyola University Chicago (2021–24)
 Treasurer
 Erin Hazlett, Icahn School of Medicine at Mount Sinai (2019–23)

Board of Directors

Dan Foti, Purdue University (2021–24)
 §Anna Finley, University of Wisconsin-Madison (Committee to Promote Student Interests; 2021–24)
 Lisa Gatzke-Kopp, Pennsylvania State University (2021–24)
 Frini Karayanidis, University of Newcastle (2018–22)
 Elizabeth Page-Gould, University of Toronto (2018–22)
 Anna Weinberg, McGill University (2019–23)
 Matthias Wieser, Erasmus University Rotterdam (2019–23)
 §Cindy Yee-Bradbury, University of California, Los Angeles (Publications Committee, 2018–22)
Legend: § non-voting member of the board

Editor in Chief, *Psychophysiology*

Monica Fabiani, University of Illinois at Urbana-Champaign (1/2014–12/2017, 1/2018–12/2020, 1/2021–12/2023)

SPR Management Office

Susan Rees (Director)

Ashley Haan (Account Director)
Mary Johns (Member Services Coordinator)
Jane Shepard (Director of Meetings)
Erica Koconis (Finance)

Committee Chairs

Archives Committee

John Allen, University of Arizona (2021–24)

Bylaws Committee

Rebecca Houston, Research Institute on Addictions (2017–21, 2021–24)

Committee to Promote Student Interests

Anna Finley, University of Wisconsin-Madison (2021–24)

Convention Sites Committee

Tanja Endrass, Technical University Dresden (2021–24)

Michael Larson, Brigham Young University (2019–23)

Distinguished Contributions to Psychophysiology Award Committee

Markus Ullsperger, Otto von Guericke Universität Magdeburg (President)

Diversity and Outreach Committee

Frini Karayanidis, University of Newcastle (2018–22)

Lisa Gatzke-Kopp, Pennsylvania State University (2018–21, 2022)

Early Career Award Committee

Eddie Harmon-Jones, University of New South Wales (2021–24)

Education and Training Committee

Dan Foti, Purdue University (2018–2019, 2020–22)

Ethical Principles Committee

Karen Quigley, Northeastern University (2019–23)

Fellows Committee

Kara Federmeier, University of Illinois, Urbana-Champaign (2020–23)

Finance Committee

Erin Hazlett (Treasurer), Icahn School of Medicine at Mount Sinai (2019–22)

Membership Committee

Sylvia Kreibig, Stanford University (2018–21, 2021–24)

Nominating Committee

Ursula Hess, Humboldt University Berlin

Program Committee

Jan R. Wessel, University of Iowa (2022 Program Chair)

Public Relations Committee

Nicole Roberts, Arizona State University (2016–19, 2019–22)

Publication Committee

Cindy Yee-Bradbury, University of California, Los Angeles (2018–22)

Student Poster Award Committee

Bruce D. Bartholow, University of Missouri (2021–22)

Women in Science and Education (WISE) Committee

Edelyn Verona, University of South Florida (2019–22)

Ad Hoc Committees**Ad Hoc Website Committee**

Jens Foell, Florida State University

Liaison to AAAS

Francie Gabbay, Uniformed Services University (2018–22)

Liaison to FABBS

Bruce D. Bartholow, University of Missouri

Liaison to Societies Consortium on Sexual Harrassment

Edelyn Verona, University of South Florida (2019–22)

Past Officers**Chair of the Organizing Board**

R.C. Davis 1958–60

Past Presidents

Chester W. Darrow 1960–61

John I. Lacey 1961–62

Albert F. Ax 1962–63

Marion A. Wenger 1963–64

Clinton C. Brown 1964–65

Robert Edelberg 1965–66

John A. Stern 1966–67

William W. Grings 1967–68

Laverne C. Johnson 1968–69

David T. Graham 1969–70

Bernard T. Engel 1970–71

Robert Roessler 1971–72

Bernard Tursky 1972–73

Frances K. Graham 1973–74

Paul A. Obrist 1974–75

David Shapiro 1975–76

Peter H. Venable 1976–77

Peter J. Lang 1977–78

Beatrice C. Lacey 1978–79

Emanuel Donchin 1979–80

David T. Lykken 1980–81

Enoch Callaway 1981–82

William F. Prokasy 1982–83

Edward S. Katkin 1983–84
Arne Öhman 1984–85
Jasper Brener 1985–86
Don C. Fowles 1986–87
Michael G.H. Coles 1987–88
Michael E. Dawson 1988–89
David A.T. Siddle 1989–90
J. Richard Jennings 1990–91
Cornelis H.M. Brunia 1991–92
John T. Cacioppo 1992–93
Stephen W. Porges 1993–94
Gregory A. Miller 1994–95
Marta Kutas 1995–96
William G. Iacono 1996–97
Judith M. Ford 1997–98
Risto Näätänen 1998–99
Richard J. Davidson 1999–00
Robert W. Levenson 2000–01
Margaret M. Bradley 2001–02
Connie C. Duncan 2002–03
Bruce N. Cuthbert 2003–04
Niels Birbaumer 2004–05
Steven A. Hackley 2005–06
Robert F. Simons 2006–07
Monica Fabiani 2007–08
John J.B. Allen 2008–09
Gabriele Gratton 2009–10
Gary Berntson 2010–11
Christopher J. Patrick 2011–12
Alfons O. Hamm 2012–13
Terry D. Blumenthal 2013–14
Karen S. Quigley 2014–15
Ottmar V. Lipp 2015–16
Cindy M. Yee-Bradbury 2016–17
Kara Federmeier 2017–18
Ursula Hess 2018–19
Bruce D. Bartholow 2019–21*

*Served as President for two years due to the global pandemic

Past Secretary-Treasurers

Albert F. Ax 1960–62
Martin Orne 1962–63
Lawrence A. Gustafson 1963–64
Betty A. Wieland 1965–68
David G. McDonald 1968–72
Kenneth M. Kleinman 1972–75
Stephen W. Porges 1975–78
Rafael Klorman 1978–81
Don C. Fowles 1981–84
Robert W. Levenson 1984–87
Robert J. Gatchel 1987–90
Gregory A. Miller 1990–93

Steven A. Hackley 1993–96

Connie C. Duncan 1996–99

Edwin W. Cook III 1999–02

In 2002, the post of Secretary-Treasurer was split into two separate positions (Secretary and Treasurer)

Past Secretaries

Robert F. Simons 2002–05

Gary G. Berntson 2005–08

Lou Tassinary 2008–11

Cindy M. Yee-Bradbury 2011–14

Bruce D. Bartholow 2014–17

Christine Larson 2017–22*

*Served as Secretary for five years due to the global pandemic

Past Treasurers

Edwin W. Cook III 2002–03

Terry D. Blumenthal 2003–06

Karen S. Quigley 2006–10

Diane L. Filion 2010–13

Scott Vrana 2013–16

Greg Hajcak 2015–2019

Past Psychophysiology Editors

Albert F. Ax 1964–73

William F. Prokasy 1974–77

David Shapiro 1978–86

Michael G.H. Coles 1987–93

John T. Cacioppo 1994–97

Gregory A. Miller 1998–02

Margaret M. Bradley 2003–05

Robert F. Simons 2006–14

Awards for Distinguished Contributions to Psychophysiology

Chester W. Darrow 1969

R.C. Davis 1969

Marion A. Wenger 1970

John I. Lacey 1970

Albert F. Ax 1973

Robert Edelberg 1974

William W. Grings 1978

Frances K. Graham 1981

Donald B. Lindsley 1984

Paul A. Obrist 1985

Peter H. Venable 1987

David Shapiro 1988

E.N. Sokolov 1988

Peter J. Lang 1990

John Stern 1993

Emanuel Donchin 1994
Risto Näätänen 1995
David T. Lykken 1998
Steven A. Hillyard 1999
John T. Cacioppo 2000
Arne Öhman 2001
Michael G.H. Coles 2002
Robert M. Stern 2004
Cornelius H.M. Brunia 2005
Marta Kutas 2007
William G. Iacono 2008
Niels Birbaumer 2009
Judith M. Ford 2010
Margaret M. Bradley 2011
Don C. Fowles 2012
Gregory A. Miller 2013
J. Richard Jennings 2014
Robert W. Levenson 2015
Brigitte S. Rockstroh 2016
Bruce N. Cuthbert 2017
Julian Thayer 2018
Monica Fabiani and Gabriele Gratton 2019
Gary Berntson 2020

Awards for Distinguished Early Career Contributions to Psychophysiology

Connie C. Duncan 1980
Kathleen C. Light 1980
John T. Cacioppo 1981
William G. Iacono 1982
Graham Turpin 1984
Ray Johnson Jr. 1985
Alan J. Fridlund 1986
J. Rick Turner 1988
Ulf Dimberg 1988
Kimmo Alho 1990
Thomas W. Kamarck 1991
Steven A. Hackley 1992
George R. Mangun 1993
Christopher J. Patrick 1993
Cyma Van Petten 1994
Friedemann Pulvermüller 1995
Erich Schröger 1996
Brett A. Clementz 1997
Gabriele Gratton 1997
Christopher R. France 1998
Axel Mecklinger 1999
John J.B. Allen 2000
James J. Gross 2000
Martin Heil 2001
Eddie Harmon-Jones 2002
Thomas Ritz 2003
Frank Wilhelm 2004

Kent A. Kiehl 2005
Kara D. Federmeier 2006
Diego Pizzagalli 2006
Bruce D. Bartholow 2007
Markus Ullsperger 2008
Sander Nieuwenhuis 2009
James Coan 2010
Eveline Crone 2011
Greg Hajcak 2012
Ilse Van Diest 2013
Heleen A. Slagter 2014
Matthias Wieser 2015
Sharna Jamadar 2016
Jan R. Wessel 2016
Christina Ottaviani 2017
James Cavanagh 2018
Anja Riesel 2018
Lauren Bylsma 2019
Julian Koenig 2019
Kyle E. Mathewson 2020
Alexandria Meyer 2021
Jonathan Stange 2021
Anna Weinberg 2021
Emily S. Kappenman 2022
Annmarie MacNamara 2022

Registration

Face-to-Face Attendees

Registration will be held in Regency Ballroom Foyer at the Hyatt Regency Hotel (see map on page 18) during the following hours:

Wednesday, September 28	2:30 p.m.–7:30 p.m. PDT
Thursday, September 29	7:30 a.m.–6:30 p.m. PDT
Friday, September 30	8:00 a.m.–6:30 p.m. PDT
Saturday, October 1	8:00 a.m.–12:30 p.m. PDT

Plan to pick up your badge prior to attending any sessions.

Virtual Attendees

SPR is using an online platform to deliver the 2022 Hybrid Annual Meeting to virtual attendees this year. An email will be sent to all registrants prior to the Annual Meeting including access information.

Please remember that you need to register for the Annual Meeting in order to obtain access to the online platform. Check the SPR website to keep up-to-date on the virtual platform (www.sprweb.org).

Poster Sessions

Poster sessions will be held in Regency Ballroom C. All posters being presented at the Annual Meeting (face-to-face) must be removed during the designated dismantle time for each session. The schedule for poster presentation assembly and dismantling is as follows:

Wednesday, September 28

Poster Session 1

6:00 p.m.–7:00 p.m. Posters Assembled

7:00 p.m.–9:00 p.m. Authors Present for Discussion and Questions

9:00 p.m.–9:30 p.m. Dismantle Posters

Thursday, September 29

Poster Session 2

8:00 a.m.–9:00 a.m. Posters Assembled

9:00 a.m.–6:10 p.m. Posters Available for Viewing

6:10 p.m.–8:10 p.m. Authors Present for Discussion and Questions

8:10 p.m.–8:40 p.m. Dismantle Posters

Friday, September 30

Poster Session 3

8:00 a.m.–9:00 a.m. Posters Assembled

9:00 a.m.–6:00 p.m. Posters Available for Viewing

6:00 p.m.–8:00 p.m. Authors Present for Discussion and Questions

8:00 p.m.–8:30 p.m. Dismantle Posters

All times are in pacific daylight time.

Virtual Poster Sessions

Are you planning to attend or present in the virtual poster session? All of the abstracts, along with their video recordings, will be housed on a page of the virtual platform. The abstract portal will be open 24/7 during and after the meeting. Check the SPR website to keep up-to-date on the virtual platform (www.sprweb.org). Register for an account with (disqus.com) in order to comment and ask questions of the poster presenters.

Virtual Speakers and Poster Presenters

Speakers who decided to present virtually will be provided with correspondence from the SPR Office about how to participate. If you have any questions, please contact Jane Shepard at meetings@sprweb.org.

Announcements

You are invited to use the SPR mobile app to post the following information:

- Employment Opportunities
- Announcements of Social Activities
- Special Interest Lunches and Dinners

Consider posting them on the SPR social media channels Facebook and Twitter (hashtag: #2022SPR). Audible signals from cell phones are distracting to the speaker as well as the audience. Please program these accordingly, and take phone calls outside of the meeting rooms. Thank you.

Mobile App

Download the SPR mobile app from the iTunes Store or Google Play—search for the WHOVA app and download it. Then within the WHOVA app, search for the Society for Psychophysiological Research. Access the program, symposia, big ideas, poster abstracts, and more! You can see all of the poster sessions along with their videos on the mobile app. Plan to download the app before you travel to the meeting site. Please be aware of any additional data charges, especially if you are traveling internationally. The mobile app will be available for downloading a few days prior to the Annual Meeting.

Publication of Abstracts

Abstracts of papers presented in the symposia and poster sessions are published online in the September 2022 supplement volume of *Psychophysiology*. Check the SPR website for the link (www.sprweb.org)

Committee Meetings

Confirm the time and place of each meeting with the chair of the committee.

Board of Directors

President: Markus Ullsperger

Wednesday, September 28, 12:00 noon–5:00 p.m. PDT (Grouse—34th Floor)

Sunday, October 2, 9:00 a.m.–12:00 noon PDT (Regency Ballroom B (3rd Floor))

Member Enhancement Chair Committee

Chair: Rebecca Levin Siltan

Thursday, September 29, 7:30 a.m.–9:00 a.m. PDT (Breakfast)

Tennyson (4th Floor)

Committee to Promote Student Interests

Chair: Anna Finley

Friday, September 30, 8:00 p.m.–9:30 p.m. PDT

Tennyson (4th Floor)

Diversity and Outreach Committee

Chair: Frini Karayanidis and Michelle Gatzke-Kopp

Friday, September 30, 7:30 a.m.–8:30 a.m. PDT

Tennyson (4th Floor)

Education and Training Committee

Chair: Dan Foti

Thursday, September 29, 8:00 p.m.–9:00 p.m. PDT

Tennyson (4th Floor)

Past Presidents Dinner (by invitation)

Immediate Past-President: Bruce D. Bartholow

Thursday, September 29, 8:30 p.m. PDT (Dinner)

Meet in the Hyatt Hotel's Lobby at 8:15 p.m. PDT

Student Poster Award Judges Meeting

Chair: Bruce D. Bartholow

Friday, September 30, 8:00 p.m.–9:00 p.m. PDT

Turner (4th Floor)

2022 Program Committee

Chair: Jan Wessel

Friday, September 30, 11:30 a.m.-1:00 p.m. PDT (Lunch)
Meet in the Hyatt Hotel's Lobby at 11:30 a.m. PDT

2023 Program Committee

Chair: Marta Andreatta

Thursday, September 29, 12:00 p.m.-1:30 p.m. PDT (Lunch)
Meet in the Hyatt Hotel's Lobby at 12:00 p.m. PDT

Special Interest Breakfasts, Luncheons, and Dinners

As in previous years, small group breakfasts, lunches, and dinners may be held to provide an informal setting for people to meet and share common interests. If you are interested in organizing such a group, please send an email to meetings@sprweb.org with the details. It will be posted on the SPR website.

New to SPR?

If you are a student or a new member and this is your first time at an SPR Annual Meeting, please feel free to approach anyone with a dot on his or her nametag. Those individuals with dots are SPR student members who already attended past conferences. We are here as a resource for you and are happy to answer questions, chat, introduce you to others, and/or provide more information about SPR, including student opportunities (e.g., student awards and the student social). We hope you enjoy the meeting!

General Business Meeting and Luncheon

12:45 p.m.-3:00 p.m. PDT
Saturday, October 1, 2022
Regency Ballroom C

Join the SPR Board of Directors and fellow SPR attendees at the Annual Business Meeting and Awards Luncheon. Preregistration and an additional fee of \$10 per person are required. If you have not already registered for the luncheon, contact the SPR Registrar via email at spr@sprweb.org. Students receive complimentary tickets to the luncheon if registered by September 16. Student poster award winners will be announced at the business luncheon. The winners of the Research Training Fellowship, Student Travel Awards, and President's Pick *Psychophysiology* Paper awards will also be recognized at the luncheon.

Speaker Ready Room

If you are speaking at the meeting, come to the Speaker Ready Room to download your slides. It is located in the Oxford Room. There will be a technician in the Speaker Ready Room to assist you. This will give you the opportunity to review your slides before they are transferred to the laptop computer in your session room. Feel free to have all your symposium speakers meet in the Speaker Ready Room to go over any last minute details prior to your session. All speakers delivering computer-based presentations must check in at the Speaker Ready Room with their presentation.

Speaker Ready Room Open Hours Oxford Room

Wednesday, September 28	5:00 p.m.-8:00 p.m. PDT
Thursday, September 29	7:00 a.m.-6:00 p.m. PDT
Friday, September 30	7:00 a.m.-6:00 p.m. PDT
Saturday, October 1	7:00 a.m.-11:00 a.m. PDT

If Your Presentation**Date/Time is.....**

Thursday, September 29, 2022
between 8:30 a.m.-12:00 p.m

Thursday, September 29, 2022
between 1:30 p.m.-5:00 p.m

Friday, September 30, 2022
between 8:30 a.m.-12:00 noon

Friday, September 30, 2022
between 1:30 p.m.-5:00 p.m

Saturday, October 1, 2022
between 8:30 a.m.-12:00 noon

Saturday, October 1, 2022
between 1:30 p.m.-5:30 p.m

Then Your Scheduled**Check-In Time is....**

Check-in prior to 8:00 p.m. on
Wednesday, September 28, 2022

Check-in prior to 11:00 a.m. on
Thursday, September 29, 2022

Check-in prior to 6:00 p.m. on
Thursday, September 29, 2022

Check-in prior to 11:00 a.m. on
Friday, September 30, 2022

Check-in prior to 6:00 p.m. on
Friday, September 30, 2022

Report prior to 11:00 a.m. on
Saturday, October 1, 2022

All times are in pacific daylight time.

Private Needs Room

A private room has been allocated for private needs such as lactation. It is available on request. Please obtain a key from the SPR registration desk, where you will get directions to the room.

Future Annual Meetings

September 27–October 1, 2023

Marriott Hotel, New Orleans, Louisiana USA

October 2–5, 2024

Prague Congress Centre, Prague, Czech Republic

Exhibitors

Take time while you are at the SPR meeting to visit the exhibit area in the Regency Ballroom C. Exhibitors contribute financial support to the SPR meeting and we ask that you take a few minutes to spend time in the exhibit area looking at the products, services, and equipment offered by the companies represented.

Thank you!

Open Exhibit Hours

Wednesday, September 28 7:00 p.m.–9:00 p.m. PDT

Thursday, September 29 10:00 a.m.–8:10 p.m. PDT

Friday, September 30 10:00 a.m.–8:00 p.m. PDT

Questions?

Contact info@sprweb.org or meetings@sprweb.org.

Meeting Room Floor Plan

All sessions will be held at the Hyatt Regency Hotel unless specifically noted in the program.

Third Floor

Regency B, C, D, E, F Ballrooms

Oxford Room

Fourth Floor

Brighton

Cavendish

Tennyson

Turner

Second Floor

Plaza Rooms

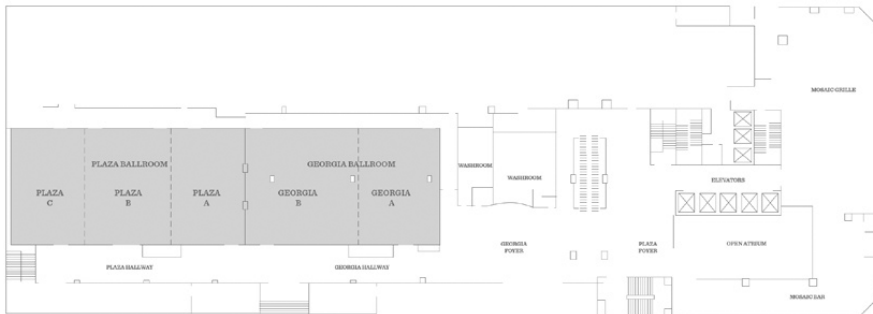
Georgia Room

34th Floor

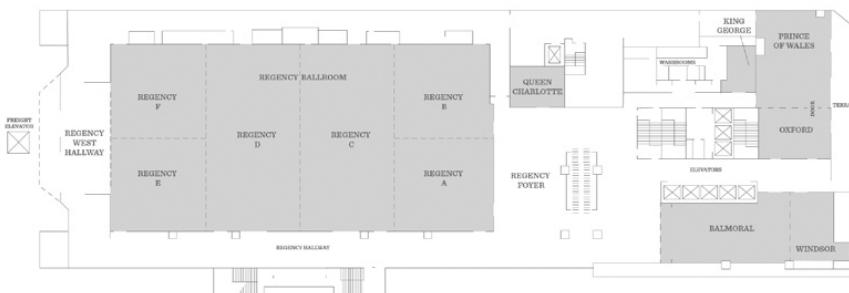
English Bay

Grouse

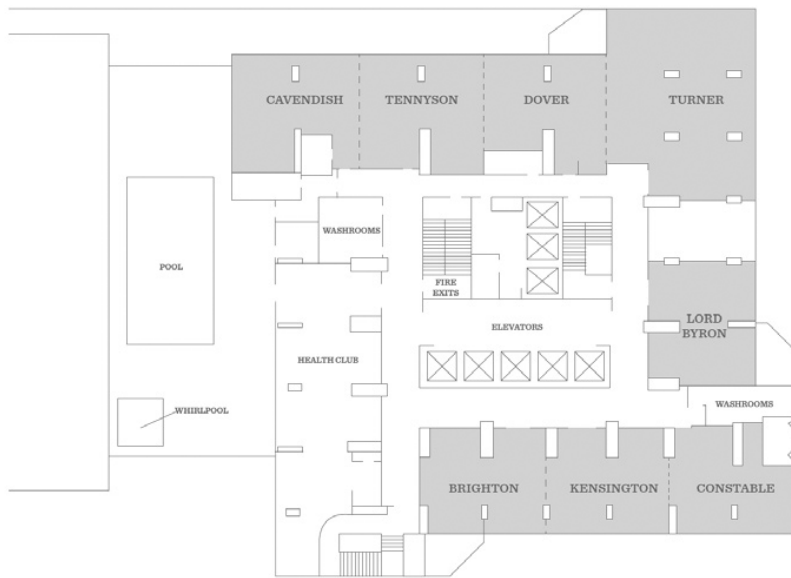
Plaza Level (Second Floor)



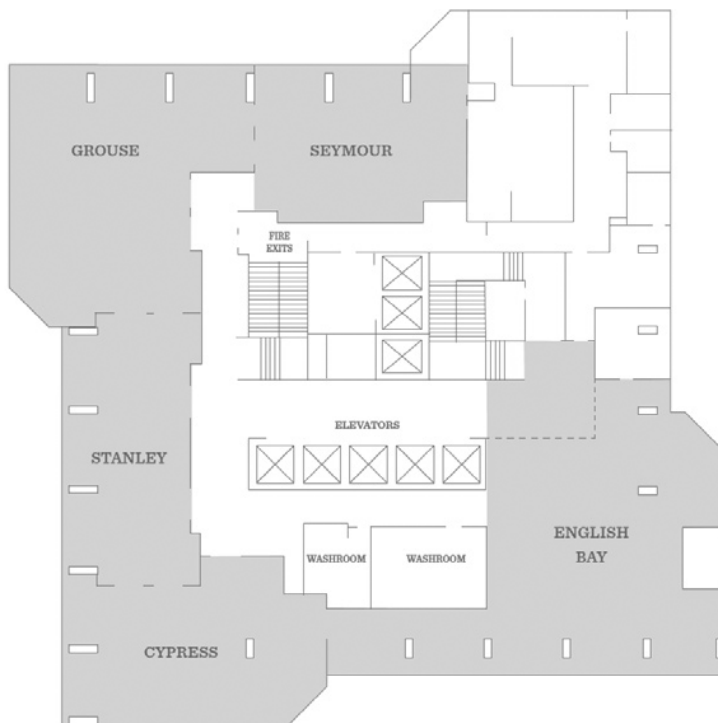
Convention Level (Third Floor)



Fourth Floor



Perspectives Level (34th Floor)



Program**Wednesday, September 28, 2022**

9:00 a.m.-4:30 p.m. PDT

Regency Ballroom E (3rd Floor)

Pre-Conference Workshop #1

Micro ERP Boot Camp

Emily S. Kappenman, PhD

Assistant Professor, Department of Psychology, San Diego State University, San Diego, CA

9:00 a.m.-4:30 p.m. PDT

Regency Ballroom D (3rd Floor)

Pre-Conference Workshop #2

Methods for Analyzing Neural Oscillations and Aperiodic Activity

Bradley Voytek, PhD

Professor, Department of Cognitive Science, Halıcıoğlu Data Science Institute, Neurosciences Graduate Program, Kavli Institute for Brain and Mind, University of California, San Diego, San Diego, CA

9:00 a.m.-4:30 p.m. PDT

Regency Ballroom F (3rd Floor)

Pre-Conference Workshop #3

Multi-Level Modeling Workshop

Elizabeth Page-Gould, PhD

Canada Research Chair in Social Psychophysiology, Chair, Graduate Department of Psychology, and Associate Professor, Department of Psychology, University of Toronto, Toronto, Ontario

12:00 p.m.-5:00 p.m. PDT

Grouse (34th Floor)

Board of Directors Meeting

2:30 p.m.-7:30 p.m. PDT

Regency Ballroom Foyer (3rd Floor)

Registration Open

5:00 p.m.-6:30 p.m. PDT

Regency Ballroom F (3rd Floor)

Using *Psychophysiology's* Guideline Articles as a Resource and as a Guide for Publishing in the Journal

Monica Fabiani

University of Illinois, Champaign-Urbana

Andreas Keil

University of Florida

Lisa Gatzke-Kopp

Pennsylvania State University

5:00 p.m.-8:00 p.m. PDT

Oxford Room (3rd Floor)

Speaker Ready Room Open

7:00 p.m.-9:00 p.m. PDT

Regency Ballroom C (3rd Floor)

Opening Reception, Poster Session 1 and Exhibits Open

Thursday, September 29, 2022

7:00 a.m.–6:00 p.m. PDT
 Oxford Room (3rd Floor)
 Speaker Ready Room Open

7:30 a.m.–6:30 p.m. PDT
 Regency Ballroom Foyer (3rd Floor)
 Registration Open

7:30 a.m.–9:00 a.m. PDT
 Tennyson (4th Floor)
 Member Enhancement Chair Committee

8:30 a.m.–10:00 a.m. PDT
 Regency Ballroom D (3rd Floor)

Symposium 1.1.

STUDYING MOTIVATION – LESSONS FROM TRAITS, STATES AND COGNITIVE CONTROL

Session Chair: Katharina Paul
 University of Hamburg

Discussant: John Allen
 University of Arizona

IS FRONTAL ALPHA ASYMMETRY AN INDEX OF TRAIT APPROACH MOTIVATION IN MOTIVATIONAL CONTEXTS? EVIDENCE FROM A LARGE-SCALE DATASET

Katharina Paul
 University of Hamburg

MOTOR-PREPARATION ACROSS MULTIPLE MANIPULATIONS OF MOTIVATIONAL INTENSITY

Ricardo A. Wilhelm
 Laureate Institute for Brain Research

DECISION, MAINTENANCE, AND VALUE OF PHYSICAL EFFORT ARE ASSOCIATED WITH FRONTAL MIDLINE THETA AND REWARD POSITIVITY

Akina Umemoto
 Columbia University

EFFECTS OF METHYLPHENIDATE ON THE MOTIVATION OF FLEXIBLE AND FOCUSED COGNITIVE CONTROL

Monja I. Froböse
 Heinrich Heine University Düsseldorf

8:30 a.m.–10:00 a.m. PDT
 Plaza C (2nd Floor)

Symposium 1.2

LITTLE BRAIN, BIG QUESTIONS: EXAMINATION OF CEREBELLAR ACTIVITY FROM MOVEMENT TO COGNITION AND AFFECT

Session Chair: Krystal L. Parker
 University of Iowa

Discussant: Krystal L. Parker
 University of Iowa

CEREBELLAR MODULATION OF COGNITION AND COGNITIVE NETWORKS

Catherine Stoodley
American University

CEREBELLAR ABNORMALITIES IN PSYCHIATRIC DISORDERS: FROM PSYCHOTIC DISORDERS TO TRANSDIAGNOSTIC PSYCHOPATHOLOGY

Jerilyn S. Kent
University of Texas, Dallas

CEREBELLAR TRANSCRANIAL MAGNETIC STIMULATION IN PATIENTS WITH BIPOLAR DISORDER

Victoria A. Muller Ewald
University of Iowa

NON-INVASIVE ELECTROPHYSIOLOGICAL RECORDING OF THE HUMAN CEREBELLUM DURING MOTOR LEARNING AND TIMING

Neil P.M. Todd
University of New South Wales, Sydney

8:30 a.m.-10:00 a.m. PDT

Plaza A (2nd Floor)

Symposium 1.3

NON-INVASIVE BRAIN STIMULATION: FROM BASIC MECHANISM TO CLINICAL APPLICATIONS

Session Chairs: Martin J. Herrmann
University of Würzburg

Markus Junghöfer
University of Muenster

OSCILLATION PHASE-SPECIFIC MODULATION OF CORTICAL EXCITABILITY USING CLOSED-LOOP TRANSCRANIAL MAGNETIC STIMULATION

Miles Wischniewski
University of Minnesota

CONCURRENT TMS-FMRI: CAUSAL PERTURBATION AND MAPPING OF NEUROCIRCUITRY

Lisa M. McTeague
Medical University of South Carolina

NONINVASIVE STIMULATION OF THE VENTROMEDIAL PREFRONTAL CORTEX INCREASES RATIONALITY OF HUMAN DECISION-MAKING IN A FINANCIAL GAMBLING PARADIGM

Thomas Kroker
University of Muenster

TRANSCRANIAL STATIC MAGNETIC STIMULATION OF THE VENTROMEDIAL PREFRONTAL CORTEX EVOKES A 'NEGATIVITY BIAS' IN THE PROCESSING OF EMOTIONAL SCENES: MAGNETOENCEPHALOGRAPHIC CORRELATES

Miguel Escrig
Universidad Europea de Valencia

AUGMENTING EXPOSURE-BASED THERAPY IN ACROPHOBIA WITH INTERMITTENT THETA BURST STIMULATION

Lisa M. Cybinski
University of Wuerzburg

8:30 a.m.-10:00 a.m. PDT

Georgia B (2nd Floor)

Big Idea Session: New Methods in Psychophysiology

Session Chair: Travis Baker

Rutgers University

8:30 a.m.-8:45 a.m. PDT

LOW-INTENSITY TRANSCRANIAL FOCUSED ULTRASOUND TARGETING THE RIGHT PREFRONTAL CORTEX:
A NEW METHOD TO INCREASE APPROACH AND DECREASE WITHDRAWAL BEHAVIOR VIA SPECIFIC
INHIBITION OF MIDFRONTAL THETA

Philipp Ziebell

University of Würzburg

8:45 a.m.-9:00 a.m. PDT

HOW YOUR SPEECH RESPONDS TO STRESS: THE VALIDATION OF ACOUSTIC, PROSODIC, AND SEMANTIC
SPEECH FEATURES IN A MULTI-PARADIGM STRESS-INDUCTION TASK

Mitchel Kappen

Ghent University

9:00 a.m.-9:15 a.m. PDT

DAILY WEARABLE SENSORS FOR PSYCHOPHYSIOLOGICAL RESEARCH: WHEN AND HOW

Veronica Dudarev

University of British Columbia

9:15 a.m.-9:30 a.m. PDT

HOW LOW CAN YOU GO? MEASUREMENT OF EVENT-RELATED BRAIN POTENTIALS FROM A TWO
ELECTRODE EEG SYSTEM

Katherine Boere

The University of Victoria

9:30 a.m.-9:45 a.m. PDT

MEASURING STARTLE BLINK USING CMOS CAMERA (PHYSIOCAM)

Shayama Shah

Indiana University

9:45 a.m.-10:00 a.m. PDT

REAL-TIME STIMULATION OF PARAHIPPOCAMPAL PHASE-RESETTING DURING SPATIAL NAVIGATION
USING CLOSED-LOOP EEG-TMS

Matte R. Güth

Rutgers University

10:00 a.m.-10:30 a.m. PDT

Regency Ballroom C (3rd Floor)

Refreshment Break, Visit the Exhibits

10:00 a.m.-8:10 p.m. PDT

Regency Ballroom C (3rd Floor)

Exhibits Open

10:30 a.m.-12:00 p.m. PDT

Regency Ballroom D (3rd Floor)

Presidential Symposium on Diversity, Equity, and Representation

Sponsored by WISE and the Diversity and Outreach Committee

Session Chair: Lisa Gatzke-Kopp
Pennsylvania State University

WHAT, WHEN, AND FOR WHOM? REFLECTIONS ON THE ROLE OF SEX, GENDER AND HORMONES IN ANXIETY, MOOD AND ASSOCIATED COGNITIVE FUNCTIONS

Jason Moser, Courtney Louis

Michigan State University

NEURAL MECHANISMS OF PERCEIVING EYE GAZE AND EMOTIONAL FACIAL EXPRESSIONS DURING MOTHERHOOD

Shadi Bagherzadeh Azbari¹, Andrea Hildebrandt², Olaf Dimigen¹, Werner Sommer¹

¹*Humboldt University of Berlin*, ²*Carl von Ossietzky Universität Oldenburg*

HORMONAL STATUS EFFECTS ON THE ELECTROPHYSIOLOGICAL CORRELATES OF PERFORMANCE MONITORING IN WOMEN

Myrthe Jansen^{1,2}, Danielle Hamstra^{1,2}, Mischa de Rover^{1,2}, Ellen de Bruijn^{1,2}, Willem van der Does^{1,2,3}

¹*Department of Clinical Psychology*, ²*Leiden Institute for Brain and Cognition (LIBC)*, ³*Leiden University Treatment and Expertise Center (LUBEC)*

SEX AND AGE MODERATE THE RELATIONSHIP BETWEEN THE REWARD POSITIVITY AND SYMPTOMS OF DEPRESSION IN AN ADULT COMMUNITY SAMPLE

Roslyn Harold¹, Kayla Donalson², David Rollock¹, Roman Kotov², Greg Perlman², Katherine Jonas², Dan Foti¹

¹*Purdue University*, ²*Stony Brook University*

12:00 p.m.-1:30 p.m. PDT

Grouse (34th Floor)

Early Career Networking Opportunities Conversation Luncheon

12:00 p.m.-1:30 p.m. PDT

2023 Program Committee

Meet in the Hyatt Hotel's Lobby at 12:00 p.m. PDT

12:00 p.m.-1:30 p.m. PDT

Lunch Break (on your own)

1:30 p.m.-1:35 p.m. PDT

Regency Ballroom D (3rd Floor)

Opening Remarks

Markus Ullsperger

President

1:35 p.m.-2:35 p.m. PDT

Regency Ballroom D (3rd Floor)

Invited Address

Interpreting the Mechanisms and Meaning of Human MEG/EEG Signals with the Human Neocortical Neurosolver Software

Stephanie R. Jones, PhD

Associate Professor, Department of Psychology, Brown

University, Providence, RI



Introduction: Jan Wessel
University of Iowa

2:35 p.m.-3:00 p.m. PDT
Regency Ballroom C (3rd Floor)
Refreshment Break and Visit the Exhibits

3:00 p.m.-4:30 p.m. PDT
Regency Ballroom D (3rd Floor)

Symposium 2.1

DISENTANGLING MULTIPLEXED CONTRIBUTIONS TO ERROR AND REWARD PROCESSING ALTERATIONS
IN PSYCHIATRY

Session Chair: Hans Kirschner
Otto-von-Guericke University

MOTIVATIONAL CONTEXT AND ERROR PROCESSING IN IMPULSIVITY AND COMPULSIVITY
Rebecca Overmeyer
Technische Universität Dresden

DIVERGING EFFECTS OF THE OPIOID SYSTEM ON ERROR PROCESSING
Daniela M. Pfabigan
University of Oslo

THE REWARD POSITIVITY IS A NEXUS OF MULTIDIMENSIONAL VALUE
James F. Cavanagh
University of New Mexico

SHARED AND SELECTIVE BIASES IN REWARD PROCESSING IN DEPRESSION AND SCHIZOPHRENIA
Hans Kirschner
Otto-von-Guericke University

3:00 p.m.-4:30 p.m. PDT
Plaza A (2nd Floor)

Symposium 2.2

SPEECH-IN-NOISE COMPREHENSION THROUGH LIFESPAN: NEW ADVANCES FROM COGNITIVE
NEUROSCIENCE

Session Chairs: Claude Alain
Rotman Research Institute

Kimmo Alho
University of Helsinki

DYNAMICS OF AUDITORY REFLECTIVE ATTENTION IN SPEECH-IN-NOISE PERCEPTION
Vanessa Chan
Rotman Research Institute

BRAIN ACTIVITY DURING SELECTIVE ATTENTION TO AUDIO-VISUAL DIALOGUES

Kimmo Alho

University of Helsinki

CAN BILATERAL COCHLEAR IMPLANTS HELP CHILDREN COMPREHEND SPEECH IN NOISE MORE EASILY?

Karen Gordon

University of Toronto

BRAIN ACTIVITY IS ALTERED DURING AUDITORY SPATIAL SELECTIVE ATTENTION IN PEOPLE WITH HEARING LOSS

Andrew Dimitrijevic

SunnyBrook Hospital

3:00 p.m.-4:30 p.m. PDT

Plaza C (2nd Floor)

Symposium 2.3

PSYCHOPHYSIOLOGY IN NONHUMAN PRIMATES AS A TRANSLATIONAL BRIDGE

Session Chair: Vincent D. Costa

Oregon Health and Science University

PUPILLOMETRY AS A MEASURE OF SUBJECTIVE BELIEFS DURING REINFORCEMENT LEARNING

Vincent D. Costa

Oregon Health and Science University

INTERACTION BETWEEN DECISION-MAKING AND INTEROCEPTIVE REPRESENTATIONS OF BODILY AROUSAL IN FRONTAL CORTEX

Peter H. Rudebeck

Icahn School of Medicine at Mount Sinai

AFFECTIVE PSYCHOPHYSIOLOGY IN RHESUS MONKEYS FROM WOMB-TO-TOMB

Eliza Bliss-Moreau

University of California, Davis

3:00 p.m.-4:30 p.m. PDT

Georgia B (2nd Floor)

Symposium 2.4

USING INTERNATIONAL, CROSS-LABORATORY COLLABORATIONS TO ADVANCE NEUROSCIENTIFIC METHODOLOGY

Session Chair: Vanja Ković

University of Belgrade

Discussant: Suzy J. Styles

Nanyang Technological University

LEVERAGING COMMUNITY EXPERTISE TO IMPROVE METHODS REPORTING IN EEG RESEARCH WITH ARTEM-IS

Anđela Šoškić

University of Belgrade

#EEGMANYLABS - A LARGE-SCALE COLLABORATIVE ASSESSMENT OF THE REPLICABILITY OF EEG RESEARCH

Yuri G. Pavlov

University of Tuebingen

EEGMANYPIPELINES - THE EFFECT OF ANALYTICAL VARIABILITY ON EEG RESEARCH RESULTS

Nastassja L. Fischer

Nanyang Technological University

4:30 p.m.-4:40 p.m. PDT

Break

4:40 p.m.-6:10 p.m. PDT

Regency Ballroom D (3rd Floor)

Symposium 3.1

NEURAL SIGNATURES OF EMOTION PROCESSING AND REGULATION AND THEIR ROLE IN PSYCHOPATHOLOGY

Session Chairs: Julia Klawohn

MSB Medical School Berlin

Anja Riesel

Universität Hamburg

UNDERSTANDING THE ROLE OF NEURAL RESPONSES TO SOCIO-AFFECTIVE STIMULI IN THE DEVELOPMENT OF PSYCHOPATHOLOGY

Anna Weinberg

McGill University

THE ROLE OF POSITIVE EMOTIONALITY IN THE ASSOCIATION BETWEEN THE LATE POSITIVE POTENTIAL AND DEPRESSIVE SYMPTOMS IN ADOLESCENCE

Kreshnik Burani

Florida State University

POSITIVE EMOTION UP-REGULATION: DURABILITY, GENERALIZATION AND EFFECTIVENESS UNDER WORKING MEMORY LOAD

Kayla A. Wilson

Texas A&M University

CHANGES IN THREAT PROCESSING IN ANXIETY AND ANXIETY DISORDERS: FINDINGS FROM EVENT-RELATED POTENTIALS DURING REPEATED PRESENTATION OF EMOTIONAL IMAGES

Anja Riesel

Universität Hamburg

NEURAL CORRELATES OF EMOTIONAL REACTIVITY AS PROGNOSTIC MARKERS OF CBT RESPONSE IN OCD

Julia Klawohn

Humboldt-Universität zu Berlin

4:40 p.m.-6:10 p.m. PDT

Plaza A (2nd Floor)

Symposium 3.2

FEAR AND LOATHING IN VR: PSYCHOPHYSIOLOGICAL FEAR AND ANXIETY RESPONSES IN VIRTUAL REALITY

Session Chair: Johannes Rodrigues

Julius-Maximilians University of Würzburg

Discussant: Travis Baker

Rutgers University Newark

THE REALITY OF VIRTUAL REALITY

Benjamin Schöne
Osnabrück University

OSCILLATIONS DYNAMICS DURING PROXIMAL AND DISTAL THREAT IN A VIRTUAL ROOM

Galit Karpov
Rutgers University

FOLLOW YOUR HEART: CARDIAC DEFENSIVE REACTIONS AND ORIENTING RESPONSES CORRESPOND TO AVOIDANCE BEHAVIOR TYPE CHOICES IN A VIRTUAL T-MAZE, WHILE FRONTAL ASYMMETRY IS LINKED TO APPROACH AND AVOIDANCE

Johannes Rodrigues
Julius-Maximilians Universität Würzburg

COMPLEX FEAR RESPONSES IN VIRTUAL REALITY: A MOBILE EEG STUDY

Joanna Kisker
Osnabrück University

4:40 p.m.-6:10 p.m. PDT
Georgia B (2nd Floor)

Symposium 3.3

LEARNING AND CONTROL OF TASK REPRESENTATIONS: EVIDENCE FROM BEHAVIORAL, NEUROMODULATION, AND MULTIMODAL NEUROIMAGING STUDIES

Session Chairs: Kai Hwang and Jiefeng Jiang
University of Iowa

DYNAMICS OF TASK REPRESENTATIONS SUPPORT FLEXIBLE COGNITIVE CONTROL

Kai Hwang
University of Iowa

WORKING MEMORY REPRESENTATIONS ARE SELECTED BY FRONTAL-PARIETAL THETA CONNECTIVITY AND SUPPRESSED BY PARIETAL-OCCIPITAL ALPHA POWER

Justin Riddle
University of North Carolina, Chapel Hill

INTERFERENCE AND INTEGRATION IN HIERARCHICAL TASK LEARNING

Jiefeng Jiang
University of Iowa

REPRESENTATION OF MULTI-STEP EVENTS AND ITS EFFECT ON TEMPORAL MEMORY

Tanya Wen
Duke University

6:10 p.m.-8:10 p.m. PDT
Regency Ballroom C (3rd Floor)

Poster Session 2

8:00 p.m.-9:00 p.m.
Tennyson (4th Floor)
Education and Training Committee

8:30 p.m. PDT
Past Presidents Dinner

(by invitation)

Meet in the Hyatt Hotel's Lobby at 8:15 p.m. PDT

Friday, September 30, 2022

7:00 a.m.-6:00 p.m. PDT

Oxford Room (3rd Floor)

Speaker Ready Room

7:30 a.m.-8:30 a.m.

Tennyson (4th Floor)

Diversity and Outreach Committee

8:00 a.m.-6:30 p.m. PDT

Regency Ballroom Foyer (3rd Floor)

Registration Open

8:00 a.m. PDT

Regency Ballroom Foyer (3rd Floor)

Light Breakfast

8:30 a.m.-10:00 a.m. PDT

Regency Ballroom D (3rd Floor)

Faces of the Future Flash Talks

Session Chair: Jan Wessel

University of Iowa

New Approaches for Tracking Working Memory Load with EEG

Kirsten Adam

University of California, San Diego

Hasty Sensorimotor Decisions Rely on An Overlap of Broad and Selective Changes In Motor Activity

Gerard Derosiére

UCLouvain, Brussels

The Impacts of Loneliness on the Brain and Psychophysiology of Emotion

Anna Finley

University of Wisconsin, Madison

Movement Analysis Joins Psychophysiology to Investigate Cognitive Control

Mario Hervault

University of Iowa

From Pineapples to Dollar Signs and Smiling Faces: Why Stimulus Features Matter in Feedback Research

Daniela M. Pfabigan

University of Oslo and Vestfold Hospital Trust, Tønsberg

Leveraging Causal Tools in Cognitive Neuroscience for Personalized Psychiatry

Justin Riddle

University of North Carolina, Chapel Hill

Context-Specific Flexibility Adjustments: Task-Sets Define Boundaries of Control Strategies

Audrey Siqi-Liu

Duke University

Investigating the Effects of Control Signals in the Interactions Between Working Memory and Perception

Chunyu Teng

University of Wisconsin, Madison

Prediction Errors Influence Cost-Benefit Computations During Reasoning

Chad C. Williams

University of Victoria

10:00 a.m.-10:30 a.m. PDT

Regency Ballroom C (3rd Floor)

Refreshment Break

10:00 a.m.-8:00 p.m. PDT

Regency Ballroom C (3rd Floor)

Exhibits Open

10:30 a.m.-11:30 a.m. PDT

Regency Ballroom D (3rd Floor)

Invited Address

Reflections on Cortico-Subcortico-Cortical Circuitry in Action, Perception, and Cognition

Sonja A. Kotz, PhD, MSc

Chair of Neuropsychology and Translational Cognitive Neuroscience, Section Head Neuropsychology, Director of the Basic and Applied NeuroDynamics Laboratory, Maastricht University, Maastricht, The Netherlands



Introduction: Jason Moser

Michigan State University

11:30 a.m.-1:00 p.m. PDT

2022 Program Committee

Meet in the Hyatt Hotel's Lobby at 11:30 a.m. PDT

11:30 a.m.-1:00 p.m. PDT

Virtual Poster Session

Grab your laptop or log-in on your mobile phone or tablet to visit the virtual poster session! Log-in to the SPR virtual platform and click on the abstract page to visit the virtual posters. Log-in information will be provided to all registrants. Be sure to establish an account in **Disqus** (disqus.com) so that you can comment and ask questions of the virtual poster presenters.

11:30 a.m.-1:00 p.m. PDT
Lunch Break (on your own)

1:00 p.m.-2:30 p.m. PDT
Regency Ballroom D (3rd Floor)

Symposium 4.1

THE ROLE OF CEREBROVASCULAR RISK FACTORS IN COGNITIVE, ANATOMICAL, AND FUNCTIONAL BRAIN AGING

Session Chairs: Monica Fabiani and Gabriele Gratton
University of Illinois, Urbana-Champaign

HIGH BLOOD PRESSURE AND AGING: CAN WE TELL THEIR EFFECTS APART?

J. Richard Jennings
University of Pittsburgh

PATTERNS OF COGNITIVE CONTROL DECLINE IN OLDER ADULTS WITH AND WITHOUT
CARDIOVASCULAR RISK FACTORS

Frini Karayanidis
University of Newcastle

EFFECTS OF PHYSICAL ACTIVITY INTERVENTIONS ON BRAIN HEALTH IN LATE ADULTHOOD

Kirk I. Erickson
University of Pittsburgh

TAKING THE PULSE OF AGING: HOW ARTERIAL ELASTICITY AND CEREBROVASCULAR REACTIVITY RELATE
TO BRAIN ANATOMY AND FUNCTION

Monica Fabiani
University of Illinois, Urbana-Champaign

1:00 p.m.-2:30 p.m. PDT
Georgia B (2nd Floor)

Symposium 4.2

FROM BENCH TO BEDSIDE: ADVANCEMENTS IN QUANTIFYING AND MODULATING NEURAL CIRCUIT
DYSFUNCTION IN SUBSTANCE USE DISORDERS

Session Chair: Travis E. Baker
Rutgers University

Discussant: Bruce D. Bartholow
University of Missouri

SECOND-ORDER ALCOHOL CUE CONDITIONING IN THE HUMAN LABORATORY: PRELIMINARY STUDIES OF
INDIVIDUAL DIFFERENCES

Roberto Cofresi
University of Missouri

THE REWARD POSITIVITY IS ENHANCED IN INDIVIDUALS WITH ALCOHOL USE DISORDER

Garima Singh
University of New Mexico

MODULATION OF REWARD-RELATED BIOMARKERS IN SUBSTANCE USE DISORDERS

Kathryn Biernacki
Rutgers University

ADDRESSING “KNOWN UNKNOWN” IN THE APPLICATION OF TRANSCRANIAL MAGNETIC STIMULATION TO TREAT SUBSTANCE USE DISORDERS: AN EXEMPLAR OF CHRONIC NEUROMODULATION FOR COCAINE USE DISORDER

Vaughn R. Steele
Yale School of Medicine

1:00 p.m.-2:30 p.m. PDT
Plaza A (Second Floor)

Big Idea Session: Psychophysiology of Cognitive Control and Executive Functions

Session Chair: Jim Cavanagh
University of New Mexico

CEREBELLAR EEG SOURCE LOCALIZATION REVEALS AGE-RELATED COMPENSATORY ACTIVITY MODERATED BY GENETIC RISK FOR ALZHEIMER'S DISEASE

Elizabeth R. Paitel
Marquette University

AMPHETAMINE USE DISORDER IS LINKED TO HEIGHTENED EMOTIONAL URGENCY AND INSULAR CORTEX RECRUITMENT DURING BEHAVIORAL INHIBITION

Jennifer L. Stewart,
Laureate Institute for Brain Research and University of Tulsa

THE IMPACT OF EXERCISE ON PSYCHOPHYSIOLOGICAL INDICES OF ERROR MONITORING: DOES INTENSITY MATTER?

Kaylie A. Carbine
California State University Dominguez Hills

EFFECTS OF STATE WORRY AND WORKING MEMORY LOAD MANIPULATIONS ON PSYCHOPHYSIOLOGICAL INDICES OF ERROR-PROCESSING

Sara B. LoTemplio
University of Utah

UNRAVELING THE COGNITIVE CORRELATES OF HEART RATE VARIABILITY WITH THE EX-GAUSSIAN AND DRIFT DIFFUSION MODELS

Derek P. Spangler
The Pennsylvania State University

THE INTEROCEPTIVE NEURAL MECHANISM UNDERLYING ADAPTIVE COGNITIVE CONTROL

Seung Suk Kang
University of Missouri, Kansas City

2:30 p.m.-3:00 p.m. PDT
Regency Ballroom C (3rd Floor)

Refreshment Break

3:00 p.m.-4:30 p.m. PDT
Regency Ballroom D (3rd Floor)

Presidential Symposium: Transcranial Focused Ultrasound Neuromodulation: A Novel Tool in Psychophysiology

Session Chair: Lennart Verhagen
Radboud University

NON-INVASIVE NEUROMODULATION OF DEEP BRAIN CIRCUITS WITH ULTRASOUND

Lennart Verhagen
Radboud University

BRINGING MR-GUIDED TRANSCRANIAL ULTRASOUND STIMULATION (TUS) INTO FOCUS

Kim Butts Pauly
Stanford University

STUDYING COGNITION WITH ULTRASOUND NEUROMODULATION: INDUCING SHORT TO MEDIUM NEUROPLASTIC EFFECTS

Elsa Fouragnan
Plymouth University

4:30 p.m.-5:30 p.m. PDT

Regency Ballroom D (3rd Floor)

Invited Address

Probing the Role of the Cerebellum in Sensorimotor Learning and Cognition



Rich Ivry, PhD

Professor of Psychology and Neuroscience, Department
of Psychology, University of California, Berkeley, CA

Introduction: Jan Wessel
University of Iowa

6:00 p.m.-8:00 p.m. PDT

Regency Ballroom C (3rd Floor)

Poster Session 3

8:00 p.m.-9:00 p.m. PDT

Turner (4th Floor)

Student Poster Award Judges Meeting

8:00 p.m.-9:30 p.m. PDT

Tennyson (4th Floor)

Committee to Promote Student Interests Meeting

10:00 p.m. PDT

Student Social

Fable Diner and Bar, 755 Richards Street

Saturday, October 1, 2022

7:00 a.m.–11:00 a.m. PDT
Oxford Room (3rd Floor)
Speaker Ready Room

8:00 a.m.–12:30 p.m. PDT
Regency Ballroom Foyer (3rd Floor)
Registration Open

8:30 a.m.–10:00 a.m. PDT
Georgia B (2nd Floor)

Symposium 5.1

MULTIMODAL SOCIO-EMOTIONAL COMMUNICATION: BASIC MECHANISMS AND FUNCTIONING IN
ALTERED SENSORY AND CENTRAL CONDITIONS

Session Chairs: Carly A. Anderson
University College London and University of British Columbia

Stefan R. Schweinberger
Friedrich Schiller University of Jena

VOICES, MUSIC AND THE MCGURK EFFECT: AUDITORY STUDIES IN PATIENTS WITH THE COMPLEX
VISUAL DISORDERS OF PROSOPAGNOSIA AND ALEXIA

Jason J.S. Barton
University of British Columbia

BENEFITS OF VISUAL SPEECH PROCESSING FOR LANGUAGE COMPREHENSION: A CHALLENGE FOR NON-
LINGUISTIC SOCIO-EMOTIONAL PROCESSING?

Carly A. Anderson
University College London and University of British Columbia

LINKS BETWEEN MUSICALITY AND VOCAL EMOTION PERCEPTION: ACOUSTIC PARAMETERS AND
ELECTROPHYSIOLOGICAL CORRELATES

Christine Nussbaum
Friedrich Schiller University of Jena

TRAINING SOCIO-EMOTIONAL SKILLS: PERSPECTIVES FROM PARAMETER-SPECIFIC MORPHING AND
CARICATURING

Stefan R. Schweinberger
Friedrich Schiller University of Jena

8:30 a.m.–10:00 a.m. PDT
Regency Ballroom D (3rd Floor)

Symposium 5.2

PRECISION MODULATION OF ANXIETY AND MOOD DISORDER-RELEVANT BEHAVIORS USING
NEUROSTIMULATION: WHAT CAN NEUROPHYSIOLOGY TELL US

Session Chair: Christopher T. Sege
Medical University of South Carolina

Discussant: Lisa M. McTeague
Medical University of South Carolina

ACCELERATED RTMS AS A TOOL FOR ENHANCING COGNITIVE CONTROL: EVIDENCE FROM
NEUROPSYCHOLOGY AND NEUROPHYSIOLOGY

Christopher T. Sege
Medical University of South Carolina

INTERMITTENT THETA-BURST STIMULATION TO THE ROSTROMEDIAL PREFRONTAL CORTEX MODULATES REWARD-RELATED NEURAL ACTIVITY

Jon Ryan

Florida State University

INFLUENCE OF NON-INVASIVE TRANSCUTANEOUS AURICULAR VAGUS NERVE STIMULATION (taVNS) ON EMOTIONAL EPISODIC MEMORY: THE ROLE OF TONIC AND TRANSIENT STIMULATION

Mathias Weymar

University of Potsdam

TRANSCRANIAL DIRECT CURRENT STIMULATION MODULATES HEART RATE AND HEART RATE VARIABILITY DURING IN VIVO EXPOSURE THERAPY

Adam Cobb

University of Texas, Austin

8:30 a.m.-10:00 a.m. PDT

Plaza A (2nd Floor)

Symposium 5.3

TRANSDIAGNOSTIC NEUROCOGNITIVE MECHANISMS RELATED TO THREAT UNCERTAINTY AND EXTINCTION

Session Chairs: Matthias J. Wieser

Erasmus University

Martin J. Herrmann

University of Würzburg

DISTAL STRESS AND THE PERSISTENCE OF CONDITIONED FEAR MEMORIES

Marta Andreatta

Erasmus University Rotterdam

MODELING ANXIETY AND ITS TREATMENT IN THE LAB: A NOVEL MEANS OF ELICITING CONTEXT AND MODULATION OF THREAT EXTINCTION BY WORKING MEMORY LOAD

Annmarie MacNamara

Texas A&M University

NOT AS CERTAIN AS WE THOUGHT - THE (NON-)EFFECTS OF INTOLERANCE OF UNCERTAINTY ON FEAR EXTINCTION AND PERFORMANCE MONITORING

Matthias J. Wieser

Erasmus University

FUNCTIONAL NEUROANATOMY OF UNPREDICTABLE THREAT PROCESSING IN THE PREDICTION OF TREATMENT RESPONSE IN ANXIETY DISORDERS

Martin J. Herrmann

University of Würzburg

10:00 a.m.-10:30 a.m. PDT

Regency Ballroom Foyer (3rd Floor)

Refreshment Break

10:30 a.m.-11:30 a.m. PDT

Regency Ballroom D (3rd Floor)

Presidential Address 2022

Beyond Peaks and Troughs: Multiplexed Performance Monitoring Signals in the EEG

Prof. Dr. med. Habil. Markus Ullsperger
Professor of Neuropsychology, Otto-von-Guericke
University Magdeburg, Germany



11:30 a.m.-12:30 p.m. PDT
Regency Ballroom D (3rd Floor)

Presidential Address 2020–21

Salience and Cognitive Control: Inter- and Intraindividual Differences and Implications for Social and Clinical Behavior
Bruce D. Bartholow, PhD
Professor, Department of Psychological Sciences,
University of Missouri, Columbia, MO



12:45 p.m.-3:00 p.m. PDT
Regency Ballroom C (3rd Floor)

SPR Business Meeting and Awards Luncheon

(Register for the luncheon on the registration form.)

Join your colleagues and friends at this annual event honoring a variety of award recipients and highlighting SPR activities. Students are eligible for a free ticket by signing-up on the registration form

3:15 p.m.-4:45 p.m. PDT

Early Career Award Addresses

Session Chair: Eddie Harmon-Jones
The University of New South Wales

3:15 p.m.-3:45 p.m. PDT
Regency Ballroom D (3rd Floor)

Early Career Award Address

The Role of ERPs in Psychological Science: Past, Present, and Future
Emily S. Kappenman, PhD
San Diego State University, San Diego, CA



3:45 p.m.-4:15 p.m. PDT

Regency Ballroom D (3rd Floor)

Early Career Award Address

Disengaged: The Significance of Blunted LPPs Across Psychiatric Health and Disease

Annmarie MacNamara, PhD

Assistant Professor, Department of Psychological and
Texas A&M University, College Station



4:15 p.m.-4:45 p.m. PDT

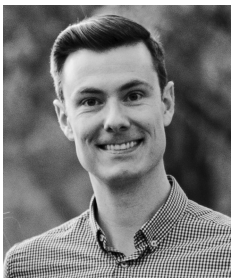
Regency Ballroom D (3rd Floor)

Early Career Award Address

Static and Dynamic Markers of Affect Regulation: Integrating Psychophysiological Indices Across Time and Contexts

Jonathan P. Stange, PhD

University of Southern California, Los Angeles



9:00 p.m. PDT

Regency Ballroom C (3rd Floor)

Saturday Night Social

Sunday, October 2, 2022

9:00 a.m.-12:00 p.m. PDT

Regency Ballroom B (3rd Floor)

Board of Directors Meeting

Poster Session 1

Wednesday, September 28, 2022

Regency Ballroom C

6:00 p.m.–7:00 p.m. Posters Assembled

7:00 p.m.–9:00 p.m. Authors Present for Discussion and Questions

9:00 p.m.–9:30 p.m. Dismantle Posters

1-001 | DIMENSIONALITY ESTIMATION AND REDUCTION OF EEG BEFORE INDEPENDENT COMPONENT ANALYSIS: THE IMPACTS ON THE RELIABILITY OF THE EEG MEASURESSeung Suk Kang, Joseph Bodenheimer
*University of Missouri, Kansas City***1-003 | PERFORMANCE MONITORING AND ITS DEVELOPMENT – A COGNITIVE SYSTEMS APPROACH**Ty Lees, Zachary Fisher, Lisa Gatzke-Kopp
*The Pennsylvania State University***1-004 | PERSONAL CHOICE SHIELDS AGAINST NOISE EFFECTS ON EFFORT-RELATED CARDIOVASCULAR RESPONSE**Johanna Falk¹, Guido Gendolla¹, Peter Gollwitzer^{2,3,4},
Gabriele Oettingen^{2,5}
¹University of Geneva, ²New York University, ³University of
Konstanz, ⁴Leuphana University of Lüneburg, ⁵University
of Hamburg**1-005 | HYPERREACTIVITY AND IMPAIRED HABITUATION OF STARTLE AMPLITUDE DURING UNPLEASANT PICTURES IN BORDERLINE BUT NOT SCHIZOTYPAL PERSONALITY DISORDER: DEFICIENT INHIBITORY CONTROL?**Erin Hazlett^{1,2}, Kim Goldstein¹, M. Mehmet Haznedar^{1,2},
Marianne Goodman^{1,2}, Kalpana Kapil-Pair¹,
Elen-Sarrah Dolgopolskaia¹
¹Icahn School of Medicine at Mount Sinai, ²James J. Peters
VA Medical Center**1-006 | EXTERNALLY IMPOSED BALANCE ERRORS EVOKE AN ERN**Aiden Payne^{1,2}, Lena Ting², Greg Hajcak¹
¹Florida State University, ²Emory University**1-008 | REDUCED ELECTROCORTICAL RESPONSES TO PLEASANT PICTURES IN DEPRESSION: A TIME-DOMAIN AND TIME-FREQUENCY DELTA ANALYSES**Carola Dell'Acqua^{1,2}, C.J. Brush¹, Kreshnik Burani¹,
Nicholas Santopetro¹, Julia Klawohn^{1,3},
Simone Messerotti Benvenuti², Greg Hajcak¹.
¹Florida State University, ²University of Padua, ³MSB
Medical School Berlin**1-009 | ERROR-RELATED NEURAL ACTIVITY IN CHILDREN WITH OBSESSIVE-COMPULSIVE DISORDER: A TIME-FREQUENCY INVESTIGATION**Carola Dell'Acqua^{1,2}, Greg Hajcak¹, C.J. Brush¹,
Nicholas Santopetro¹, Alexandria Meyer¹
¹Florida State University, ²University of Padua**1-012 | ATYPICAL APERIODIC AND PERIODIC NEURAL ACTIVITY IN PARKINSON'S DISEASE**Douglas Angus¹, Anna Finley², Nicholas Kelley³,
Ahmed Moustafa¹, James Cavanagh⁴
¹Bond University, ²University of Wisconsin, Madison,
³University of Southampton, ⁴University of New Mexico**1-013 | RELATIONSHIP BETWEEN WITHIN-PERSON DIFFERENCES IN ERROR-RELATED NEGATIVITY AND ERROR POSITIVITY AND CORRECT-TRIAL RESPONSE-TIME MEANS AND VARIATIONS IN HEALTHY PARTICIPANTS**Miranda Lutz¹, Scott Baldwin², Ingmar Franken¹,
Michael Larson², Peter Clayson³
¹Erasmus University Rotterdam, ²Brigham Young
University, ³University of South Florida

1-014 | A SYSTEMATIC REVIEW AND META-ANALYSIS ON THE ACUTE EFFECTS OF EXERCISE ON P3 AMPLITUDE AND LATENCY

Shih-Chun Kao¹, Feng-Tzu Chen², David Moreau³,
Eric Drollette⁴, Steve Amireault¹, Chien-Heng Chu⁵,
Yu-Kai Chang⁵
¹Purdue University, ²China Medical University,
³University of Auckland, ⁴University of North Carolina,
Greensboro, ⁵National Taiwan Normal University

1-015 | THE IMPACT OF THREATENING CONTEXTS ON DEFENSIVE RESPONSES TO CONDITIONED FEAR STIMULI

Yannik Stegmann¹, Marta Andreatta^{1,2},
Matthias Wieser²
¹University of Würzburg, ²Erasmus University Rotterdam

1-018 | FLOW EXPERIENCE MAY PARTLY ARISE DUE TO THE LOCUS COERULEUS NOREPINEPHRINE (LC-NE) SYSTEM BEING IN A MODE THAT SUPPORTS A STRONG TASK ENGAGEMENT

Hairong Lu¹, Dimitri Van der Linden¹, Arnold Bakker^{1,2}
¹Erasmus University Rotterdam, ²University of Johannesburg

1-019 | ALTERED BEHAVIOR AND ELECTROPHYSIOLOGY IN THE ULTIMATUM GAME IN INDIVIDUALS WITH ELEVATED DEPRESSIVE SYMPTOMS

Korbinian Riepl¹, John Allen², Johannes Rodrigues¹,
Johannes Hewig¹
¹University of Würzburg, ²The University of Arizona

1-020 | GENERALIZATION OF SAVORING TO NOVEL POSITIVE STIMULI: AN ERP INVESTIGATION

Kayla Wilson, Annmarie MacNamara.
Texas A&M University

1-021 | MUSICAL TEMPO INFLUENCES LISTENERS' CARDIAC DYNAMICS

Shannon Wright¹, Caroline Palmer¹, Nick Greene²,
Steven Livingstone²
¹McGill University, ²University of Otago

1-022 | BUDDHIST PHILOSOPHY

Shankar Biswas
Dhamma Sima Vihar, Andhra Pradesh

1-023 | A LONGITUDINAL STUDY OF THE EFFECTS OF SUBCONCUSSIVE IMPACTS ON ELECTROPHYSIOLOGICAL MEASURES OF AUDITORY WORKING MEMORY IN CONTACT AND COLLISION SPORTS ATHLETES

Matthew Wilson, Christopher Hill
Northern Illinois University

1-024 | RELATIONAL VICTIMIZATION PREDICTS DEVELOPMENTAL INCREASES IN ERROR-RELATED BRAIN ACTIVITY AND THEREBY INCREASES IN SOCIAL ANXIETY IN ADOLESCENT GIRLS ACROSS TWO YEARS

Sally Cole¹, Lushna Mehra¹, Enrique Cibrian¹,
Elise Cummings², Brady Nelson², Greg Hajcak¹,
Alexandria Meyer¹
¹Florida State University, ²Stony Brook University

1-025 | PARENT REPORT OF CHILD CONCERN OVER MAKING MISTAKES RELATES TO CHILD ERROR-RELATED NEGATIVITY

Isaac Mirzadegan, Lyndsey Chong, Karl Wissemann,
Lushna Mehra, Alexandria Meyer
Florida State University

1-026 | HEBB CAUGHT MY EYE: PUPIL DILATION AS AN INDEX OF SEQUENCE LEARNING

Alessandro Pozzi, Sacha-Michelle Dubois-Sénéchal, Marlène Bolduc, Hélène St-Cyr, François Vachon
Université Laval

1-027 | VAGALLY-MEDIATED HEART RATE VARIABILITY IS ASSOCIATED WITH STRESSFUL LIFE EVENTS BUT NOT SELF-PERCEIVED STRESS IN A PREDOMINANTLY HISPANIC SAMPLE OF FEMALE COLLEGE STUDENTS

Grant Benham, Jordan Kenemore, Juliana Chavez, Samantha Garcia, Marco Fuentes, Natali Tamez
The University of Texas Rio Grande Valley

1-028 | BIOPHYSICAL DYNAMICS OF THE STOP-SIGNAL P3 DURING ACTION-STOPPING

Darcy Diesburg^{1,2}, Jan Wessel¹, Stephanie Jones^{2,3}
¹University of Iowa, ²Brown University, ³Providence VA Medical Center

1-029 | INDIVIDUAL DIFFERENCES IN LPP AMPLITUDE AND THETA POWER PREDICT CUE-INDUCED EATING BEHAVIOR

Kyla Gibney^{1,2}, George Kypriotakis², Francesco Versace^{1,2}
¹MD Anderson Cancer Center UTHHealth Graduate School of Biomedical Sciences, ²The University of Texas MD Anderson Cancer Center

1-030 | HOW YOUR SPEECH RESPONDS TO STRESS: THE VALIDATION OF ACOUSTIC, PROSODIC, AND SEMANTIC SPEECH FEATURES IN A MULTI-PARADIGM STRESS-INDUCTION TASK

Mitchel Kappen^{1,2}, Jonas Van Der Donckt², Gert Vanhollebeke^{1,2}, Sofie Van Hoecke², Marie-Anne Vanderhasselt^{1,2}
¹Ghent University, University Hospital Ghent (UZ Ghent), ²Ghent University

1-031 | PROSPECTIVE AND SPECIFIC PREDICTION OF SYMPTOMS OF DEPRESSION AND ANXIETY: UNDERSTANDING THE UTILITY OF THE ERROR-RELATED NEGATIVITY AND REWARD POSITIVITY AS MARKERS OF RISK

Lidia Panier, Juhyun Park, Anna Weinberg
McGill University

1-032 | AUTONOMIC SYSTEM FUNCTION AND MALTREATMENT HISTORY AMONG MEN IN THERAPY FOR ERECTILE DYSFUNCTION

Olivia Roath¹, Karoline Bischof², Adrian Stumm², Ben Kneubühler², Annette Bischof-Campbell², Luisa Guscetti², Gregory Lewis¹, Jacek Kolacz^{1,3}
¹Indiana University, ²Zurich Institute for Clinical Sexology and Sexual Therapy, ³The Ohio State University Wexner Medical Center

1-033 | POSITIVE EMOTION UPREGULATION IS RESISTANT TO CONCURRENT WORKING MEMORY LOAD: AN EVENT-RELATED POTENTIAL STUDY OF REAPPRAISAL AND SAVORING

Yuhan Cheng¹, Blaine Peters¹, Annmarie MacNamara^{1,2}
¹Texas A&M University, ²Texas A&M Institute for Neuroscience

1-034 | CHOOSING TASK CHARACTERISTICS SHIELDS AGAINST INCIDENTAL AFFECTIVE INFLUENCES: EVIDENCE FROM EFFORT-RELATED CARDIOVASCULAR RESPONSE

Johanna Falk¹, Guido Gendolla¹, Peter Gollwitzer^{2,3,4}, Gabriele Oettingen^{2,5}
¹University of Geneva, ²New York University, ³University of Konstanz, ⁴Leuphana University of Lüneburg, ⁵University of Hamburg

1-035 | ELECTROPHYSIOLOGICAL MECHANISMS UNDERLYING GENERALIZATION LEARNING IN MISOPHONIA

Richard Ward, Faith Gilbert, Payton Chiasson, Jourdan Pouliot, Skylar McIlvanie, Caitlin Traiser, Kierstin Riels, Ryan Mears, Andreas Keil
University of Florida

1-036 | UNEXPECTED RELIEF: LIKELIHOOD MODULATES THE REWP ELICITED BY THE ABSENCE OF AVERSIVE OUTCOMES

Elizabeth Bauer, Annmarie MacNamara
Texas A&M University

1-037 | THE ERROR-RELATED NEGATIVITY AND STARTLE REFLEX TO PREDICTABLE AND UNPREDICTABLE THREAT

Rachel Ferry, Brady Nelson
Stony Brook University

1-038 | PATERNAL SOCIAL ANXIETY MODERATES THE ASSOCIATION BETWEEN PARASYMPATHETIC REGULATION AT AGES 3 AND 5 AMONG MALE PRESCHOOLERS

Sarah Peoples, Rebecca Brooker
Texas A&M University

1-039 | MODELING TRAIT EFFECTS ON THE RELATIONSHIP BETWEEN NEURAL PROCESSING AND RESPONSE TIMES ON A FLANKER TASK IN NEUROTYPICAL ADULTS

Susan Mingils¹, Patricia Davies¹, Mei-Heng Lin², William Gavin¹
¹Colorado State University, ²Rutgers University

1-040 | UNFOLDING THE NEGATIVE EXPECTANCY BIAS IN SOCIAL ANXIETY: A NEUROCOMPUTATIONAL ASSESSMENT OF SOCIAL FEEDBACK-BASED LEARNING

Elise Kortink, Ili Ma, Selin Topel, Melle van der Molen
Leiden University

1-042 | NEURAL MECHANISMS OF FEAR LEARNING PROCESSES IN PATIENTS WITH DIFFERENT ANXIETY DISORDERS

Franziska Kausche, Hannes Carsten, Kai Haerpfer, Anja Riesel
University of Hamburg

1-043 | THE DIFFERENTIAL INFLUENCE OF POSITIVE AND NEGATIVE HEALTH FACTORS ON THE PREADOLESCENT BRAIN

Nicole Logan^{1,2}, Nicole Occidental¹, Jennifer Watrous¹, Lauren Raine¹, Arthur Kramer^{1,3}, Charles Hillman¹
¹Northeastern University, ²University of Rhode Island, ³University of Illinois, Urbana-Champaign

1-044 | SOME DON'T LIKE IT HOT: GENITAL AND SUBJECTIVE SEXUAL AROUSAL IN RESPONSE TO COPULATORY MOVEMENTS OF VARIOUS ANIMAL SPECIES

Ondřej Novák, Lucie Krejčová, Martin Hůla, Kateřina Potyszová, Klára Bártová
Charles University

1-047 | THE EFFECT OF CEREBELLAR TMS ON ERROR PROCESSING: A COMBINED SINGLE-PULS TMS AND ERP STUDY

Adam Berlijn^{1,2,3}, Dana Huvermann^{1,2,4}, Stefan Groiss^{1,2}, Manfred Mittelstaedt¹, Alfons Schnitzler^{1,2}, Christian Bellebaum¹, Dagmar Timmann⁴, Martina Minnerop^{1,2,3}, Jutta Peterburs^{1,5}
¹Heinrich-Heine-University Düsseldorf, ²University Hospital Düsseldorf, ³Research Center Jülich, ⁴University Hospital Essen, ⁵Medical School Hamburg

1-048 | NEURAL RESPONSE TO MONETARY AND SOCIAL REWARDS AND FAMILIAL RISK FOR PSYCHOPATHOLOGY IN ADOLESCENTS

Clare Beatty¹, Greg Hajcak², Brady Nelson¹
¹Stony Brook University, ²Florida State University

1-050 | REMOTE PHYSIOLOGICAL MEASUREMENTS UNDER CONTROLLED LIGHTING CONDITIONS

Britain Taylor^{1,2}, Gregory Lewis^{1,2}, Aidan Whelan², Nicole Miller^{1,2}

¹Indiana University Bloomington, Luddy School of Informatics, Computing, and Engineering, ²The Kinsey Institute at Indiana University

1-051 | INTERGENERATIONAL TRANSMISSION OF THE ERROR-RELATED NEGATIVITY IN MOTHER-DAUGHTER DYADS: DEVELOPMENTAL EFFECTS

Simon Morand-Beaulieu, Iulia Banica, Anna Weinberg
McGill University

1-052 | WHERE RDOC AND HITOP MEET: PERSON-CENTERED AND VARIABLE-CENTERED APPROACHES TO UNDERSTANDING NEURAL RESPONSES TO REWARD AND THREAT AND ASSOCIATIONS WITH PSYCHOPATHOLOGY

Juhyun Park¹, Lidia Panier¹, Greg Hajcak², Roman Kotov³, Anna Weinberg¹

¹McGill University, ²Florida State University, ³Stony Brook University

1-053 | THE DIVING RESPONSE AND CARDIAC VAGAL ACTIVITY: A SYSTEMATIC REVIEW AND META-ANALYSIS

Stefan Ackermann¹, Markus Raab^{1,2}, Serena Backschat¹, David Smith¹, Florian Javelle¹, Sylvain Laborde^{1,3}

¹German Sport University, ²London South Bank University, ³Normandie Université

1-054 | EFFECTS OF VOLUNTARY SLOW BREATHING ON HEART RATE VARIABILITY: A SYSTEMATIC REVIEW AND META-ANALYSIS

Sylvain Laborde^{1,2}, Mark Allen³, Uirassu Borges¹, Fabrice Dosseville², Thomas Hosang⁴, Maša Iskra¹, Emma Mosley⁵, Caterina Salvotti¹, Laura Spolverato¹, Nina Zammit¹, Florian Javelle¹

¹German Sport University, ²Normandie Université,

³University of Wollongong, ⁴Helmut Schmidt University,

⁵Solent University

1-055 | WHITE MATTER INTEGRITY, BODY MASS INDEX, AND MILD COGNITIVE IMPAIRMENT

Emma Tinney¹, Psyche Loui¹, Arthur Kramer^{1,2}, Charles Hillman¹, Curtis Johnson³

¹Northeastern University, ²University of Illinois, Urbana-Champaign, ³University of Delaware

1-057 | MNEMONIC MECHANISMS IN VIRTUAL REALITY - COMPARISON OF EVENT-RELATED POTENTIAL CORRELATES OF REPETITION SUPPRESSION BETWEEN VR AND THE CONVENTIONAL LABORATORY

Marike Johnsdorf, Joanna Kisker, Merle Sagehorn, Thomas Gruber, Benjamin Schöne
University of Osnabrück

1-058 | TAKE A BREAK FOR MEMORY SAKE! EXAMINING EFFECTS OF SHORT BOUTS OF ACUTE EXERCISE ON ERPS, INHIBITORY CONTROL, AND EPISODIC MEMORY IN CHILDREN

Eric Drollette, Alexis Slutsky-Ganesh, Megan Johnson, Christopher Wahlheim, Jennifer Etnier
University of North Carolina, Greensboro

1-059 | EFFECTS OF PERCEIVED AGENCY AND CONTEXTUAL VALENCE IN A DELAYED FEEDBACK TASK

Alliya Padiak¹, Fernando Valle-Inclan², Takahiro Hirao³, Hiroaki Masaki⁴, Steven Hackley¹

¹University of Missouri, Columbia, ²University of La Coruña, ³National Institute for Quantum and Radiological Science and Technology, ⁴Waseda University

1-060 | THE AUTONOMIC NERVOUS SYSTEM IN IT'S NATURAL ENVIRONMENT: IMMERSION IN NATURE IS ASSOCIATED WITH CHANGES IN HEART RATE AND HEART RATE VARIABILITY

Emily Scott¹, Sara LoTempio², Amy McDonnell², Glen McNay², Kevin Greenberg², Ty McKinney², Bert Uchino², David Strayer²

¹Northern Vermont University, ²University of Utah

1-061 | COMPARISON OF GROUP AND INDIVIDUAL LEVEL RELIABILITY AND CROSS-PHASE RESPONSE PREDICTION OF CONDITIONED FEAR

Mana Ehlers¹, Maren Klingelhofer-Jens¹, Manuel Kuhn^{1,2}, Tina Lonsdorf¹

¹University Hospital Hamburg-Eppendorf, ²Harvard Medical School

1-063 | EEG REVEALS SIMULTANEOUS, DISSOCIATED PROCESSES IN THE EXERTION OF COGNITIVE CONTROL

Mark Lavelle, James Cavanagh
University of New Mexico

1-064 | INFLUENCE OF A PHOBIC STIMULUS ON EMOTIONAL FACIAL RECOGNITION: AN ERP STUDY

Roberto Huerta-Chávez, Julieta Ramos-Loyo
University of Guadalajara

1-065 | THE ROLE OF UNCERTAINTY AND COGNITIVE LOAD ON ANXIETY AND FEAR RESPONSES

Deachul Seo¹, Nicholas Balderston², Juyoen Hur¹

¹Yonsei University, ²University of Pennsylvania

1-066 | MEASURING ENGAGEMENT DURING TEXT READING: EVIDENCE FROM ELECTRODERMAL ACTIVITY (EDA)

Yilun Jheng¹, Leen Catrysse², Sander Van de Cruys¹, David Gijbels¹, Karolien Poels¹

¹University of Antwerp, ²Open University, Heerlen

1-067 | LOCATION OF THE CORTICAL SOURCE OF THE "ERROR-RELATED NEGATIVITY" IN ADOLESCENTS AND ADULTS; A MULTIMODAL ERP/FMRI STUDY

John Richards¹, Stefania Conte¹, Nathan Fox², Emilio Valadez², Marco McSweeney², Enda Tan², Daniel Pine³, Anderson Winkler³, Lucrezia Liuzzi³, George Buzzell⁴

¹University of South Carolina, ²University of Maryland, ³National Institute of Mental Health, ⁴Florida International University

1-068 | EVENT-RELATED POTENTIALS IN CHILDREN WITH FRAGILE X SYNDROME AND AUTISM SPECTRUM DISORDER

John Richards¹, Margaret Guy², Abigail Hogan¹, Jane Roberts¹

¹University of South Carolina, ²Loyola University

1-069 | HIGH INTRAINDIVIDUAL VARIABILITY OF ERN SCORES ACROSS HEALTHY CONTROL AND PSYCHOPATHOLOGY GROUPS

Harold Rocha¹, Peter Clayson¹, Scott Baldwin², Philippe Rast³, Michael Larson²

¹University of South Florida, ²Brigham Young University, ³University of California, Davis

1-070 | THREAT-INDUCED ALTERATIONS IN COGNITION AND ASSOCIATIONS WITH DISINHIBITED BEHAVIOR

Julia McDonald, Edelyn Verona
University of South Florida

1-072 | PHYSIOLOGICAL LINKAGE BETWEEN AUTISTIC AND NON-AUTISTIC ADULT DYADS DURING COLLABORATIVE TASKS

Megan Fok, Manhua Wang, Sunwook Kim, Anabelle Theodat, Brian Baker, Myoungsoon Jeon, Angela Scarpa
Virginia Tech

1-073 | RELATIONSHIP BETWEEN PRENATAL ENVIRONMENTAL FACTORS INCLUDING SMOKING, ALCOHOL DRINKING, AND CHEMICAL EXPOSURE AND EVENT-RELATED BRAIN POTENTIALS DURING GO/NOGO TASK: THE HOKKAIDO STUDY

Keiko Yamazaki, Chihiro Miyashita, Naomi Tamura, Sachiko Itoh, Atsuko Ikeda-Araki, Reiko Kishi
Hokkaido University

1-074 | THE EFFECT OF CEREBELLAR STIMULATION ON FEEDBACK PROCESSING: A COMBINED SINGLE-PULSE TMS AND ERP STUDY

Dana Huvermann^{1,2,3}, Adam Berlijn^{1,3,4}, Stefan Groiss^{1,3}, Manfred Mittelstaedt¹, Alfons Schnitzler^{1,3}, Christian Bellebaum¹, Martina Minnerop^{1,3,4}, Dagmar Timmann², Jutta Peterburs^{1,5}
¹Heinrich-Heine-University Düsseldorf, ²University Hospital Essen, ³University Hospital Düsseldorf, ⁴Research Center Jülich, ⁵Medical School Hamburg

1-075 | HOW STRESS AFFECTS ATTENTION: TOP-DOWN, BOTTOM-UP OR BOTH?

Mauro Larra, Leon von Haugwitz, Edmund Wascher
Leibniz Institute - IfADo

1-076 | BEDFELLOWS IN LEARNING? THE RELATIONSHIP BETWEEN EEG ALPHA POWER AND PUPIL DIAMETER DURING PAVLOVIAN CONDITIONING

Kierstin Riels, Andreas Keil
University of Florida

1-077 | PHYSIOLOGICAL THREAT REACTIVITY AND THE UTILIZATION OF SOCIAL SUPPORT IN TRAUMATIZED INDIVIDUALS

Erin Stafford, Justine Rudy, Wendy D'Andrea
New School for Social Research

1-078 | A CARDIO-VISUAL FULL BODY ILLUSION IMPROVES BODY SIZE ESTIMATION IN HEALTHY WOMEN

Lynn Erpelding¹, Dimitri van Ryckeghem^{1,2}, Claus Vögele¹, Annika Lutz¹
¹University of Luxembourg, ²Maastricht University

1-079 | DEVELOPMENTAL CHANGES IN THE REWARD POSITIVITY: THE TRAJECTORY OF NEURAL RESPONSES TO MULTIPLE TYPES OF REWARDS ACROSS ADOLESCENCE AND YOUNG ADULTHOOD

Helena Renault, Clara Freeman, Anna Weinberg
McGill University

1-080 | THRILL SEEKERS AND IMPULSIVENESS LINKED WITH ADHD SYMPTOMS AND INDIFFERENCE TOWARD MONETARY GAIN

Keisha Novak^{1,2,3}, Melissa Packer West¹, Dan Foti¹
¹Purdue University, ²University of California, San Francisco, ³San Francisco VA Health Care System

1-081 | DOES THE HUNGER HORMONE GHRELIN INFLUENCE THE BRAIN'S RESPONSE TO SOCIAL RECOGNITION?

Uta Sailer¹, Federica Riva¹, Daniela Pfabigan^{1,2}

¹University of Oslo, ²Vestfold Hospital Trust

1-082 | ASSOCIATIONS AMONGST EARLY CARE, CURRENT STRESS, AND NEURAL RESPONSES TO SOCIO-AFFECTIVE INFORMATION IN A SAMPLE OF ADULT WOMEN

Corinne Sejourne, Clara Freeman, Aislinn Sandre, Iulia Banica, Paige Ethridge, Anna Weinberg
McGill University

1-083 | ELECTROPHYSIOLOGICAL NORMATIVE RESPONSES TO EMOTIONAL, NEUTRAL, AND CIGARETTE-RELATED IMAGES

Francesco Versace¹, Nicola Sambuco², Menton Deweese³, Paul Cinciripini¹

¹The University of Texas MD Anderson Cancer Center,

²Universita' di Bologna, ³Vanderbilt University

1-084 | AFFECTIVE PROCESSING OF SEXUALLY REVELANT PICTURES IN HETERO- AND HOMOSEXUAL FEMALES AND MALES: MAGNETOENCEPHALOGRAPHIC CORRELATES

Sabine Prantner¹, Markus Junghöfer², Alejandro Espino-Payá², Cristina Giménez-García¹, Rafael Ballester-Arnal¹, M. Carmen Pastor¹

¹Universitat Jaume I, ²University of Münster

1-085 | THE HEART OF SELF-REGULATION FOR MAKING THE RIGHT CHOICE? MORE THAN THE RESTING STATE, REACTIVITY AND RECOVERY OF HEART RATE VARIABILITY PREDICT ADVANTAGEOUS DECISION MAKING

Valentin Magnon¹, Frederic Dutheil², Guillaume Vallet¹

¹Université Clermont Auvergne, CNRS, LaPSCo,

²Université Clermont Auvergne, CNRS, LaPSCo, CHU Clermont-Ferrand, WittyFit

1-086 | GASTRIC INTEROCEPTION AND GASTRIC MYOELECTRICAL ACTIVITY IN INFLAMMATORY BOWEL DISEASES AND IRRITABLE BOWEL SYNDROME

André Schulz¹, Sina Welsch¹, Sarah Etringer¹, Greta Hansen¹, Léa Milbert¹, Jochen Schneider^{1,2}, Gennaro Taddei³, Raquel Gomez Bravo¹, Charilaos Lygidakis¹, Zoé van Dyck¹, Annika Lutz¹, Paul Wilmes¹, Claus Vögele¹

¹University of Luxembourg, ²Saarland University Medical Center, ³Centre Hospitalier Emile Mayrisch

1-087 | CARDIAC VAGAL RECOVERY FOLLOWING ACUTE PSYCHOLOGICAL STRESS IN HUMAN ADULTS: A SYSTEMATIC REVIEW

Charlotte Roddick, Yeon Soo (Christine) Seo, Shan-Li Barkovich, Luke Forrester, Frances Chen
University of British Columbia

1-088 | REVELIO: BRAIN POTENTIALS REVEAL A SIMILAR IMPACT OF KNOWLEDGE ON WORD-BY-WORD READING IN OLDER AND YOUNGER ADULTS

Melissa Troyer, Elizabeth Stine-Morrow, Kara Federmeier
University of Illinois, Urbana-Champaign

1-089 | AN ELECTROPHYSIOLOGICAL INVESTIGATION OF THE IMPLICATIONS OF BILINGUALISM AND AGING FOR LEXICAL AMBIGUITY PROCESSING

Shanna Kousaie¹, Naya Goguen¹, Emma Kazmierowski¹, Maxine Montpetit¹, Vanessa Taler^{1,2}

¹University of Ottawa, ²Bruyère Research Institute

1-090 | BEHAVIORALLY INHIBITED INDIVIDUALS EXPRESS ENHANCED ASSOCIATIVE LEARNING BUT REDUCED ACOUSTIC STARTLE: SUPPORT FOR A LEARNING DIATHESIS MODEL OF PTSD

Todd Allen
University of Northern Colorado

1-091 | THE INFLUENCE OF IMPLICIT BIASES ON THE PERCEPTION OF FACE MASKS: AN ERP STUDY

Riley Swain, Rochely Negron, Aminda O'Hare
Weber State University

1-092 | ABERRANT NEURAL OSCILLATIONS TO NATURALISTIC EVENT BOUNDARIES IN PERSONS WITH PARKINSON'S DISEASE

Michelle Wyrobnik^{1,2,3}, Elke van der Meer^{2,3},
Fabian Klostermann^{1,2}
¹Charité – Universitätsmedizin Berlin, ²Berlin School
of Mind and Brain, Humboldt-Universität zu Berlin,
³Humboldt-Universität zu Berlin

1-093 | SURPRISE! FRONTO-CENTRAL BETA-BURSTS CONTAIN INFORMATION ABOUT UNEXPECTED EVENTS

Joshua Tatz, Alec Mather, Jan Wessel
University of Iowa

1-094 | ATTENTION TO CONDITIONED EMOTIONAL SOUNDS: AN ERP STUDY

Rochely Negron, Riley Swain, Collin Matthews, Aminda O'Hare
Weber State University

1-095 | PHYSIOLOGY-SUBJECTIVE EXPERIENCE COHERENCE AND INTEROCEPTION

Sasha Sommerfeldt, Richard Davidson
University of Wisconsin, Madison

1-096 | USING FMRI-GUIDED TMS TO ALTER THE ACTIVITY OF THE AMYGDALA: A PILOT STUDY USING THE LATE POSITIVE POTENTIAL

Austin Gallyer, Jon Ryan, Thomas Joiner, Derek Nee,
Greg Hajcak
Florida State University

1-097 | PREDICTING MULTI-TIMESCALE LONG SHORT-TERM MEMORY MODEL HIDDEN STATES WITH EEG INDICATES THE TIMELINE OF THE BRAIN IN PROCESSING INFORMATION OF DIFFERENT TIMESCALES IN CONTINUOUS TEXT COMPREHENSION

Sijie Ling, Alona Fyshe
University of Alberta

1-098 | DISTINGUISHING NEURAL CORRELATES OF FEAR AND ANXIETY SENSITIVITY: AN FMRI INVESTIGATION OF NEGATIVE PICTURE PROCESSING

Shannon MacDonald, Annmarie MacNamara
Texas A&M University

1-099 | SPOTLIGHT ON THE ERP STUDIES OF MIGRAINE: THE USE OF PORTABLE EEG HEADBANDS TO TRACK ALTERED ATTENTIONAL RESPONSES IN MIGRAINE HEADACHE DISORDERS

Faly Golshan¹, Marla Mickleborough¹, Daniel Moss¹,
Gloria Sun¹, Janeen Loehr¹, Olav Krigolson²
¹University of Saskatchewan, ²University of Victoria

1-100 | ALCOHOL USE, CRAVING, AND AUTONOMIC NERVOUS SYSTEM FUNCTIONING IN YOUNG ADULTS

Sara McFarland, Katie Ison, Dexton Berger, Heather Kissel, Ty Brumback
Northern Kentucky University

1-102 | HEALTHY HAND CLASSIFICATION ACCURACY DURING BCI-FES THERAPY CORRELATES WITH UPPER EXTREMITY MOTOR FUNCTION IMPROVEMENT

Sebastian Sieghartsleitner^{1,2}, Marc Sebastián-Romagosa³, Woosang Cho^{1,4}, Johannes Grünwald^{1,2}, Micah Ching⁵, Christoph Guger¹
¹*g.tec Medical Engineering GmbH*, ²*Johannes Kepler University*, ³*g.tec Medical Engineering Spain SL*, ⁴*International Max Planck Research School for Neural & Behavioral Sciences*, ⁵*g.tec neurotechnology USA Inc.*

1-103 | EFFECTS OF COGNITIVE DEMANDS IN ACUTE EXERCISE ON INHIBITORY CONTROL AND ITS ELECTROPHYSIOLOGICAL INDICES: A RANDOMIZED CROSSOVER STUDY

Ting-Yu Chueh, Tsung-Min Hung
National Taiwan Normal University

1-104 | HOW DID I LOSE AGAIN? PERFECTIONISM AND THE GAMBLER'S FALLACY DURING SLEEP DEPRIVATION

Andrew Armstrong¹, Timothy Murphy¹, Danielle Molnar¹, Natalia Kubishyn², Lacey Sherk¹
¹*Brock University*, ²*Western University*

Poster Session 2

Thursday, September 29, 2022

Regency Ballroom C

8:00 a.m.–9:00 a.m. Posters Assembled

9:00 a.m.–6:10 p.m. Posters Available for Viewing

6:10 p.m.–8:10 p.m. Authors Present for Discussion and Questions

8:10 p.m.–8:40 p.m. Dismantle Posters.

2-004 | WORKING MEMORY PROCESSING OF EMOTIONAL STIMULI IN YOUNG INDIVIDUALS WITH TYPE-1 DIABETES

Geisa Gallardo-Moreno, José Gómez-Barba, Andrés González-Garrido
University of Guadalajara

2-005 | SENSORY GATING SOURCE LOCALIZATION AND ITS RELATION TO COGNITIVE FUNCTIONING IN SCHIZOPHRENIA

Emily Martinez¹, Anika Guha¹, Morgan Bartholomew^{2,3}, Alexandra Reed^{4,5}, Caroline Diehl¹, Kaia Sargent¹, Logan Andrews¹, Jessica Thoma¹, Kenneth Subotnik¹, Joseph Ventura¹, Gregory Miller¹, Keith Nuechterlein¹, Cindy Yee¹
¹*University of California, Los Angeles*, ²*San Francisco Veterans Affairs Health Care System*, ³*University of California, San Francisco*, ⁴*Veterans Affairs Connecticut Health Care System*, ⁵*Yale University*

2-006 | EXPLORE THE AUTHENTIC SELF: DECOMPOSE SELF IN SELF-POSITIVITY BIAS

Chengli Huang¹, James Butterworth¹, Douglas Angus², Constantine Sedikides¹, Nicholas Kelley¹
¹*University of Southampton*, ²*Bond University, Queensland*

2-008 | TRANSCUTANEOUS VAGUS NERVE STIMULATION VS. SLOW-PACED BREATHING: COMPARING TWO PSYCHOPHYSIOLOGICAL METHODS TO INCREASE CARDIAC VAGAL ACTIVITY

Uirassu Borges¹, Julian Tryba¹, Sylvain Laborde^{1,2}

¹German Sport University Cologne, ²University of Caen Normandy

2-009 | REDUCING UNCERTAINTY ABOUT THE EFFECT OF INTOLERANCE OF UNCERTAINTY ON THE ERROR-RELATED NEGATIVITY: A RANDOMIZED CONTROLLED TRIAL

Hannes Carsten, Kai Härpfer, Anja Riesel
University of Hamburg

2-010 | PATTERNS OF NORMOGASTRIC ACTIVITY DURING INDUCTIONS OF NEGATIVE EMOTIONALITY AND EMOTION DYSREGULATION

Abigail Szkutak¹, Megan Renna², Jean Quintero¹, Douglas Mennin¹

¹Teachers College, Columbia University, ²The University of Southern Mississippi

2-011 | THE RELATIONSHIP BETWEEN BEHAVIOURAL AND NEURAL STABILITY DURING AUDITORY-MOTOR SYNCHRONIZATION

Rebecca Scheurich, Ella Sahlas, Valentin Begel, Olivia Ellis, Caroline Palmer
McGill University

2-012 | DO YOU REMEMBER YOUR TIMES TABLES? EXAMINING THE NEURAL MECHANISMS OF ANALYTICAL REASONING THROUGH MATHEMATICS

Katherine Boere, Olave Krigolson
The University of Victoria

2-013 | DEPRESSION SYMPTOMS AND STRESSFUL LIFE EVENTS PREDICT THE DEVELOPMENT OF THE REWARD POSITIVITY ACROSS ADOLESCENCE

Aline Szenczy¹, Elise Cummings¹, Greg Hajcak², Brady Nelson¹

¹Stony Brook University, ²Florida State University

2-014 | THREAT PERCEPTION AND COGNITIVE EMOTION REGULATION: INVESTIGATING THE EFFECT OF EVOLUTIONARY RELEVANCE

Agnieszka Adamczyk^{1,2}, Jacobien van Peer¹, Mirosław Wyczesany²

¹Radboud University, ²Jagiellonian University

2-015 | LEVERAGING WEARABLE SENSORS TO EVALUATE PERSON-SPECIFIC SKIN CONDUCTANCE

Cassidy Fry, Zita Oravec, Timothy Brick, Lisa Gatzke-Kopp
Pennsylvania State University

2-016 | GRADED AND UNGRADED EXPECTATIONS: PREDICTION DYNAMICS DURING ACTIVE COMPREHENSION

Melinh Lai¹, Brennan Payne², Kara Federmeier^{1,3}

¹University of Illinois, Urbana-Champaign, ²University of Utah, ³Beckman Institute for Advanced Science and Technology

2-017 | UPLIFTING STORIES: EMBODIED PROCESSING AND RESPONSES TO ELEVATION ELICITING VIDEO CONTENT

Di Mu¹, Yen-I Lee¹, Ashley Churchill², Layne Russell³, Avonte Kiper⁴, Linh Nguyen⁵, Paul Bolls¹

¹Washington State University, ²NielsenIQ, ³Unaffiliated, ⁴Curate Insights, ⁵MediaScience

2-018 | ELUCIDATING THE COMPUTATIONAL PROCESS OF MULTI-EVIDENCE EMOTION-RELATED PERCEPTUAL DECISION-MAKING

Hilary Ngai¹, Janet Hsiao¹, Christian Luhmann²,
Aprajita Mohanty², Jingwen Jin¹

¹The University of Hong Kong, ²Stony Brook University

2-019 | ACTIVATION OF TINNITUS ASSOCIATED NETWORK IS TINNITUS-FREQUENCY SPECIFIC: AN MEG STUDY

Christian Dobel¹, Vasiliki Salvari², Daniela Korth¹,
Christo Pantev², Evangelos Paraskevopoulos³

¹Jena University Hospital, ²University of Muenster,

³University of Cyprus

2-020 | EFFECTS OF NONINVASIVE BRAIN STIMULATION ON HEART RATE AND HEART RATE VARIABILITY: A SYSTEMATIC REVIEW AND META-ANALYSIS

Maximilian Schmaußer¹, Sven Hoffmann², Markus
Raab^{1,3}, Sylvain Laborde^{1,4}

¹German Sport University, ²University of Hagen, ³London
South Bank University, ⁴Université de Caen Normandie

2-021 | THE SIGNIFICANCE OF INTERNAL ERRORS AFFECTS THE PROCESSING OF EXTERNAL ACTION EFFECTS

Robert Steinhauser¹, Robert Wirth², Wilfried Kunde²,
Marco Steinhauser¹

¹Catholic University of Eichstätt-Ingolstadt, ²Julius-
Maximilians-University Würzburg

2-022 | HEART RATE AND HEART RATE VARIABILITY AS PHYSIOLOGICAL MARKERS FOR OBSESSIVE-COMPULSIVE DISORDER: EVIDENCE FROM PATIENTS AND UNAFFECTED RELATIVES

Franziska Jüres, Julia Klawohn, Björn Elsner, Christian
Kaufmann, Norbert Kathmann
Humboldt-Universität zu Berlin

2-023 | PROBLEMATIC SMARTPHONE USE IS ASSOCIATED WITH A REDUCTION IN POSITIVE, BUT NOT NEGATIVE, REWARD PREDICTION ERRORS

Emily Gost, Kate Cowger, Robert West
DePauw University

2-024 | DISTINCT PATTERNS OF ONGOING AND EVENT-RELATED ALPHA ACTIVITY RELATED TO MIND WANDERING IN THE SART TASK

Lucy Salter, Aaniyah Childs, Rudrayani Upadhyay, West
Robert
DePauw University

2-025 | REWARD RESPONSIVENESS (BAS) FACILITATES GAINING CONTINGENCY AWARENESS IN APPETITIVE, YET NOT AVERSIVE, CONDITIONING

Johannes Finke, Tim Klucken
University of Siegen

2-026 | CLARIFYING SEX DIFFERENCES IN ADHD-RELATED ALPHA ASYMMETRY PATTERNS ACCOUNTING FOR AEPERIODIC EEG POWER SPECTRUM FEATURES

McKenzie Figuracion, Jason Dude, Sarah Karalunas
Purdue University

2-027 | THE LATE POSITIVE POTENTIAL MEDIATES THE ASSOCIATION BETWEEN PARENTAL HISTORY OF DISTRESS DISORDERS AND FIRST-ONSET DEPRESSIVE DISORDERS IN ADOLESCENT GIRLS

Jacob Feldman, Greg Perlman, Daniel Klein, Roman
Kotov, Brady Nelson
Stony Brook University

2-028 | GENDER DIFFERENCES IN EMOTION PROCESSING: AFFECTIVE RATINGS AND PERIPHERAL PHYSIOLOGY DURING A MUSIC LISTENING TASK

Nieves Fuentes-Sánchez¹, Miguel A. Escrig¹, Fernando Sales¹, Marta Saez-Royela¹, Helena Gascó-Izquierdo¹, Tuomas Eerola², M. Carmen Pastor¹

¹Universitat Jaume I, ²Durham University

2-029 | POSITIVE AND NEGATIVE AFFECT AND TRAIT ANXIETY INFLUENCES ON EMOTION REACTIONS TO MUSIC: PHYSIOLOGICAL CORRELATES OF SYMPATHETIC AND PARASYMPATHETIC ACTIVATION

Nieves Fuentes-Sánchez¹, Miguel A. Escrig¹, Helena Gascó-Izquierdo¹, Marta Saez-Royuela¹, Tuomas Eerola², M. Carmen Pastor¹

¹Universitat Jaume I, ²Durham University

2-030 | TIME-FREQUENCY POWER AND PHASE-SYNCHRONY SIGNATURES OF REACTIVITY TO VISUAL ALCOHOL CUES

Roberto Cofresi¹, Santiago Morales², Thomas Piasecki³, Bruce Bartholow¹

¹University of Missouri, Columbia, ²University of Southern California, ³University of Wisconsin, Madison

2-031 | LOW-FREQUENCY DEEP BRAIN STIMULATION OF THE SUBTHALAMIC NUCLEUS MAINTAINS COGNITIVE CONTROL

Rachel Cole¹, James Cavanagh², Arun Singh³, Jan Wessel¹, Arturo Espinoza¹, Brooke Yeager¹, Jeremy Greenlee¹, Nandakumar Narayanan¹

¹University of Iowa, ²University of New Mexico, ³University of South Dakota

2-034 | PERCEPTIONS OF STRESS, RESTING PARASYMPATHETIC ACTIVITY, AND INDIVIDUAL DIFFERENCES IN CHILDREN'S VALUE-BASED DECISION MAKING

Karen Smith, Seth Pollak

University of Wisconsin, Madison

2-035 | PUPILLARY RESPONSE TO ACOUSTIC AND CATEGORICAL DEVIANCE: WERE ALL DEVIANTS CREATED EQUAL?

François Vachon¹, Alexandre Marois², Katherine Labonté³, Annie Desmarais⁴, John Marsh⁵

¹Université Laval, ²Thales Research and Technology Canada, ³McGill University, ⁴Université de Montréal, ⁵University of Central Lancashire

2-036 | THETA ACTIVITY (4-7 HZ), NOT THE ERN, PREDICTS ADAPTIVE TASK BEHAVIOR AND COPING WITH REAL-LIFE STRESS IN A PEDIATRIC SAMPLE

Gil Shner Livne¹, George Buzzell², Tomer Shechner¹

¹University of Haifa, ²Florida International University

2-038 | PARIETO-OCCIPITAL ALPHA REDUCTION TO AUDITORY CONDITIONED THREAT VARIES AS A FUNCTION OF MISOPHONIA SYMPTOM SEVERITY

Faith Gilbert, Payton Chiasson, Skylar McIlvanie, Ryan Mears, Jourdan Pouliot, Kierstin Riels, Caitlin Traiser, Richard Ward, Andreas Keil

University of Florida

2-039 | THE IMPACT OF VALUE ON SENTENCE PROCESSING AND DOWNSTREAM MEMORY: AN ERP STUDY

Winnie Chung, Kara Federmeier

University of Illinois, Urbana-Champaign



2-040 | MORNING VERSUS EVENING EXERCISE – WHAT'S BETTER FOR YOUR DIET? EVIDENCE FROM AN EVENT-RELATED POTENTIAL (ERP) STUDY

Tracy Bertka¹, Carly Romero¹, James LeCheminant², Kaylie Carbine¹, Michael Larson²

¹California State University, Dominguez Hills, ²Brigham Young University

2-041 | CAPACITY FOR COGNITIVE SKILL LEARNING AS A PROTECTIVE FACTOR AGAINST COGNITIVE DYSFUNCTION IN PEOPLE WITH MULTIPLE SCLEROSIS: EVIDENCE FROM EVENT-RELATED POTENTIALS

Thomas Covey, Janet Shucard, David Shucard
University at Buffalo

2-043 | YOUTH CARDIAC RESPONSE DURING THREAT CONDITIONING

Zohar Klein¹, Rany Abend², Tomer Shechner¹

¹University of Haifa, ²National Institute of Mental Health

2-044 | RESPIRATORY SINUS ARRHYTHMIA AS A PROTECTIVE FACTOR IN RELATIONS BETWEEN NARCISSISM, PROBLEM DRINKING, AND AGGRESSION

Kyle Rawn, Peggy Keller
University of Kentucky

2-045 | RESTING STATE NETWORK DYNAMICS AND HIGH TRAITS OF EMOTION DYSREGULATION

Francesca Fusina¹, Marco Marino^{2,3}, Zaira Romeo¹, Chiara Spironelli¹, Alessandro Angrilli¹

¹University of Padova, ²KU Leuven, ³IRCCS San Camillo Hospital

2-047 | WATCHING WITH ARGUS EYES: CHARACTERIZATION OF EMOTIONAL AND PHYSIOLOGICAL RESPONDING IN ADULTS EXPOSED TO CHILDHOOD MALTREATMENT AND/OR RECENT ADVERSITY

Alina Koppold¹, Alexandros Kastrinogiannis¹, Manuel Kuhn^{1,2}, Tina Lonsdorf¹

¹University Medical Center Hamburg-Eppendorf,

²Harvard Medical School and McLean Hospital

2-048 | FACE PERCEPTION IN VIRTUAL REALITY: AN ELECTROPHYSIOLOGICAL COMPARISON OF EVENT-RELATED POTENTIALS IN VR AND THE CONVENTIONAL LABORATORY

Merle Sagehorn, Marike Johnsdorf, Joanna Kisker, Thomas Gruber, Benjamin Schöne
University of Osnabrück

2-049 | IMPACT OF THE COVID-19 PANDEMIC ON NEURAL RESPONSE TO REWARD

Clara Freeman, Loran Carpentier, Anna Weinberg
McGill University

2-050 | FROM “IMPOSSIBLE” TO “POSSIBLE”: INVESTIGATING PERCEPTUAL INFERENCE AND NEURAL ACTIVITY ON 3D IMPOSSIBLE OBJECTS

Yi-Chen Hsieh¹, Kokichi Sugihara², Ching-Liang Tsai³, Wen-Sung Lai¹

¹National Taiwan University, ²Meiji University, ³National Palace Museum

2-051 | CARDIAC PRE-EJECTION PERIOD REACTIVITY AND BLOOD PRESSURE REGULATION IN AFRICAN AMERICAN COLLEGE STUDENTS

Jules Harrell, Elan Donnellan, Alys Taylor, Marian Foster, Kareem Isaac, Aaron Patterson
Howard University

2-052 | UNRAVELING THE CONTRIBUTION OF SEROTONERGIC POLYMORPHISMS, PREFRONTAL ALPHA ASYMMETRY, AND INDIVIDUAL ALPHA PEAK FREQUENCY TO THE EMOTION-RELATED IMPULSIVITY ENDOPHENOTYPE

Florian Javelle¹, Andreas Löw², Wilhelm Bloch¹, Thomas Hosang², Thomas Jacobsen², Sheri Johnson³, Alexander Schenk⁴, Philipp Zimmer⁴

¹German Sport University Cologne, ²Helmut Schmidt University, ³University of California, Berkeley, ⁴Technical University Dortmund

2-053 | IMPACT OF EMOTIONAL INHIBITORY CONTROL TRAINING ON EEG THETA/BETA RATIO IN TRAUMA-EXPOSED INDIVIDUALS

Kaveh Afshar, Richard Macatee
Auburn University

2-054 | EVENT-RELATED BRAIN POTENTIALS ELICITED BY SELF AND OTHER REFERENCE IN LANGUAGE

Joanna Dolzycka, Cornelia Herbert
Ulm University

2-055 | WHAT IF THE THREAT COMES? THE ROLE OF INTOLERANCE OF UNCERTAINTY IN ERROR PROCESSING AND FEAR EXTINCTION

Marcelo Malbec¹, Joshua Hindmarsh¹, Ingmar Franken¹, Marta Andreatta^{1,2}, Matthias Wieser¹

¹Erasmus University Rotterdam, ²University of Würzburg

2-056 | GENDER EFFECT ON BEHAVIORAL AND PSYCHOPHYSIOLOGICAL RESPONSES TO EMOTIONAL STIMULI

Zaira Romeo, Alessandro Angrilli, Chiara Spironelli
University of Padova

2-057 | INDIVIDUAL DIFFERENCES IN GENERALIZING FEAR EXTINCTION LEARNING ACROSS THE SPECTRUM OF TRAIT ANXIETY

Edgar Nazareus^{1,2}, Eva-Lotta Brakemeier¹, Jan Richter^{1,2}

¹University of Greifswald, ²University of Hildesheim Foundation

2-058 | SPATIOTEMPORAL PROFILES OF ALPHA SUPPRESSION DURING BIMODAL SELECTIVE ATTENTION

Grace Clements¹, Mate Gyurkovics², Kathy Low¹, Diane Beck¹, Monica Fabiani¹, Gabriele Gratton¹

¹University of Illinois, Urbana-Champaign, ²University of Glasgow

2-061 | PUPIL RESPONSES TO EMOTIONAL IMAGES AND RELATIONS WITH ALEXITHYMIC AND AUTISTIC TRAITS

Margaret Grinshtein, Jennifer Wagner
City University of New York

2-062 | DEPRESSION SEVERITY RELATES TO SMALLER AFFECT-MODULATED REWARD POSITIVITY AMPLITUDE

Garima Singh¹, Trevor Jackson¹, Mark Lavelle¹, Darin Brown², James Cavanagh¹

¹University of New Mexico, ²Pitzer College

2-063 | IT'S A MATCH! PHYSIOLOGICAL SYNCHRONY IN A SPEED DATING EXPERIMENT

Stephanie Dimitroff¹, Bernadette Denk¹, Esther van Schwanzenberg¹, Maria Meier¹, Annika Benz¹, Ulrike Bentele¹, Eva Unternaehrer^{1,2}, Jens Pruessner¹

¹University of Konstanz, ²University of Basel



2-064 | PERSON-KNOWLEDGE IMPACTS SELECTIVE ATTENTION TO PERCEPTUAL INFORMATION: EVIDENCE FROM ERPS AND FUNCTIONAL NETWORK CONNECTIVITY

Samuel Venezia, Eric Splan, Samwell Cleary, Jasmin Cloutier, Jennifer Kubota
University of Delaware

2-065 | REWARD POSITIVITY-LOCKED HYPOACTIVATION OF VMPFC IN MAJOR DEPRESSIVE DISORDER: AN MEG STUDY

Christopher Hand Pirrung¹, Garima Singh¹, Davin Quinn², James Cavanagh¹
¹*University of New Mexico*, ²*University of New Mexico School of Medicine*

2-066 | DENSE SAMPLING APPROACHES IN PSYCHOPHYSIOLOGICAL RESEARCH: CURRENT REALITY AND FUTURE POSSIBILITIES FOR STUDYING REAL-WORLD BEHAVIOR

Amanda McGowan¹, Zachary Boyd², Danielle Cosme¹, Mia Jovanova¹, Yoona Kang¹, Farah Sayed¹, Megan Speer³, Peter Mucha⁴, Kevin Ochsner³, Dani Bassett^{1,5}, Emily Falk¹, David Lydon-Staley¹
¹*University of Pennsylvania*, ²*Brigham Young University*, ³*Columbia University*, ⁴*Dartmouth College*, ⁵*Sante Fe Institute*

2-067 | THE DEARTH OF SAMPLE DEMOGRAPHIC DESCRIPTION AND RACIAL REPRESENTATION IN CLINICAL PSYCHOPHYSIOLOGICAL RESEARCH

Angelica DeFalco¹, Lindsay Beaman¹, Jackson Cutler¹, Nicholas Doran¹, Mia Tognoli¹, Emily Perkins², Keanan Joyner³, Daniel Bradford¹
¹*Oregon State University*, ²*Florida State University*, ³*University of California, Berkeley*

2-068 | EEG AND MEG SOURCE ANALYSIS OF EMOTION AND FEATURE-BASED PERCEPTION

Andrew Farkas¹, Matt Gehr¹, Ansley Delaney¹, Markus Junghöfer², Dean Sabatinelli¹
¹*University of Georgia, Athens*, ²*University of Münster*

2-070 | DOMAIN AND SYMPTOM-LEVEL CORRELATES OF REDUCED P3 AMPLITUDE AMONG YOUNG ADULTS AT RISK FOR PSYCHOSIS

Lisa Brown, Keisha Novak, Dan Foti
Purdue University

2-071 | PSYCHOMETRIC PROPERTIES OF TELEHEALTH EEG ASSESSMENT AMONG FAMILIES AFFECTED BY ANGELMAN SYNDROME

Roslyn Harold, Kimberly Galvez-Ortega, Wei Siong Neo, Bridgette Kelleher, Dan Foti
Purdue University

2-072 | STARTLE REACTIVITY, SELF-REPORTED DISTRESS, AFFECT, AND BASELINE ALPHA AS MEASURES OF SOUND SENSITIVITY

Payton Chiasson, Faith Gilbert, Skylar Mcilvanie, Caitlin Traiser, Kierstin Riels, Ryan Mears, Jourdan Pouliot, Richard Ward, Andreas Keil
University of Florida

2-073 | NEURAL CORRELATES OF ERROR MONITORING IN SOCIAL CONTEXTS ACROSS ADOLESCENCE AND YOUNG ADULTHOOD

Grace Allison, Iulia Banica, Anna Weinberg
McGill University

2-074 | INTEROCEPTIVE ACCURACY MODERATES THE EFFECT OF AFFECTIVE EMPATHY ON REACTIVITY TO DISTRESS IN OTHERS

Frederica Rockwood¹, Stephanie Dimitroff², Anita Restrepo¹, Emily Silver¹, Greg Norman¹
¹*University of Chicago*, ²*University of Constance*

2-075 | AUDITORY ERPS IN A PROPOSED GENETIC MODEL AND A PHENOTYPIC MODEL OF ADHD – EVIDENCE OF INATTENTION

Logan Brewer¹, Jankiben Patel¹, Frank Andrasik¹, Jeffrey Sable², Samantha Regan^{3,4}, Michael Williams^{3,4}, Charles Vorhees^{3,4}, Helen Sable¹

¹The University of Memphis, ²Christian Brothers University, ³University of Cincinnati College of Medicine, ⁴Cincinnati Children's Research Foundation

2-076 | ATTENUATED GENERAL STARTLE REACTIVITY IN ADOLESCENT ATHLETES WITH A CONCUSSION HISTORY

Daniel Bradford¹, Sarah Willwerth^{2,3}, Angelica DeFalco¹, Rebekah Mannix^{2,4}, William Meehan, III^{2,3,4}, Jessie Oldham^{3,5}

¹Oregon State University, ²Boston Children's Hospital, ³The Micheli Center for Sports Injury Prevention, ⁴Harvard Medical School, ⁵Virginia Commonwealth University

2-077 | EVALUATION OF CEREBELLAR TMS AS A TOOL FOR MODULATING CORTICAL OSCILLATIONS AND COGNITIVE DEFICITS IN INDIVIDUALS WITH BIPOLAR DISORDER

Victoria Muller Ewald, Nicholas Trapp, Aaron Boes, Krystal Parker
University of Iowa

2-078 | UNDERSTANDING THE TIME COURSE OF SEMANTIC PROCESSING ACROSS THE VISUAL FIELD DURING READING: RECONCILING EVIDENCE FROM ERPS AND EYE MOVEMENT BEHAVIOR

Clara Lopes, Brennan Payne
University of Utah

2-079 | THE INFLUENCE OF TRUST ON DRIVER COGNITIVE STATES DURING AUTOMATED DRIVING

Amy McDonnell¹, Kaedyn Crabtree¹, Joel Cooper², David Strayer¹

¹University of Utah, ²Red Scientific

2-080 | DYNAMIC CHANGES IN ALPHA POWER DURING SOCCER REFEREE DECISION-MAKING SITUATIONS USING ELECTROENCEPHALOGRAPHY

Hatem Elbanna^{1,2,3}, Dirk Koester⁴, Ahmed Elshafey³, Thomas Schack^{1,2}

¹Center of Excellence - Cognitive Interaction Technology (CITEC), ²Bielefeld University, ³Mansoura University, ⁴BSP Business School Berlin

2-081 | A STUDY EXAMINING AUTHORITARIAN PARENTING AND THREAT-RELATED ATTENTIONAL BIAS IN 7- TO 12-YEAR-OLD CHILDREN USING EYE-TRACKING

Enrique Cibrian, Lyndsey Chong, Alexandria Meyer
Florida State University

2-082 | DEPRESSION AND GENERALIZED ANXIETY SYMPTOMS PREDICT THE DEVELOPMENT OF THE ERROR-RELATED NEGATIVITY ACROSS ADOLESCENCE

Elise Cummings¹, Aline Szenczy¹, Alexandria Meyer², Greg Hajcak², Brady Nelson¹

¹Stony Brook University, ²Florida State University

2-085 | EFFECTS OF MUSICAL TEMPI ON TEMPORAL PERCEPTION AND EEG ACTIVITY IN MUSICIANS

Luis Ruiz Gómez¹, Julieta Ramos-Loyo¹, Araceli Sanz-Martin¹, Markus Müller Bender²

¹University of Guadalajara, ²Autonomous University of Morelos State, Cuernavaca

2-086 | ACUTE STRESS AND REINFORCEMENT PROCESSING IN CANNABIS USERS

Thomas Preston¹, Brian Albanese¹, Norman Schmidt², Richard Macatee¹

¹Auburn University, ²Florida State University



**2-087 | COMPLEMENTARY STUDIES
CONFIRM THE IMPORTANCE OF USING
MULTIPLE NEUROPHYSIOLOGICAL MEASURES
WHEN INVESTIGATING THE DEVELOPMENT
OF BRAIN-BEHAVIOR RELATIONSHIPS**

Susan Mingils¹, Patricia Davies¹, Mei-Heng Lin²,
William Gavin¹

¹Colorado State University, ²Rutgers University

**2-088 | EFFECT OF SINGLE SESSION SMR
NEUROFEEDBACK TRAINING ON PUTTING
PERFORMANCE OF PROFESSIONAL GOLFERS**

Jia-Hao Wu¹, Ting-Yu Chueh¹, Kuo-Pin Wang²,
Chien-Lin Yu¹, Tsung-Min Hung¹

¹National Taiwan Normal University, ²Bielefeld University

**2-089 | RELATING THE STRENGTH OF
CONJUNCTIVE REPRESENTATIONS TO
EPISODIC RETRIEVAL EFFECTS IN TASK-
SWITCHING**

Benjamin Rangel, Eliot Hazeltine, Jan Wessel
University of Iowa, Iowa City

**2-090 | EFFECTS OF CEREBELLAR
OPTOGENETIC THETA BURST STIMULATION
ON PREFRONTAL CORTEX PHYSIOLOGY**

Parker Abbott, Krystal Parker
University of Iowa

**2-092 | THE AUDITORY STEADY-STATE
RESPONSES AND AUDITORY PERCEPTION IN
YOUNGER AND OLDER ADULTS**

Jaime Morales¹, Dylan Pearson¹, Yi Shen^{1,2},
Devin McAuley³, William Hetrick¹, Gary Kidd¹,
Brian O'Donnell¹

¹Indiana University Bloomington, ²University of
Washington, ³Michigan State University

**2-093 | EEG-BASED CORTICAL
CONNECTIVITY IN PARKINSON'S DISEASE**

Brooke Yeager¹, Arturo Espinoza¹, Rachel Cole¹,
Arun Singh², Nandakumar Narayanan¹

¹University of Iowa, ²University of South Dakota

**2-094 | ACTIVE EXERCISE ELICITS A MORE
ROBUST HEMODYNAMIC RESPONSE AND
MORE PERSISTENT EXECUTIVE BENEFIT
COMPARED TO PASSIVE EXERCISE**

Benjamin Tari, Joshua Ahn, Connor Dalton,
James Van Riesen, Mustafa Shirzad, Sun Young Choo,
Matthew Heath

University of Western Ontario

**2-095 | EXPERIENCING FREQUENT RECENT
INTERPERSONAL STRESSORS RELATES
TO A LARGER ERN IN CHILDREN AND
ADOLESCENTS**

Lushna Mehra, Greg Hajcak, Alexandria Meyer
Florida State University

**2-096 | HEART RATE VARIABILITY AND
EXPRESSIVE SUPPRESSION INTERACT
TO PROSPECTIVELY PREDICT COVID-19
PANDEMIC-RELATED POST-TRAUMATIC
STRESS SYMPTOMS**

Francesca Mura, Carola Dell'Acqua, Elisabetta Patron,
Simone Messerotti Benvenuti, Daniela Palomba
University of Padua, Padua, Italy

**2-097 | L-DOPA AND OXYTOCIN INFLUENCE
THE NEUROCOMPUTATIONAL MECHANISMS
OF SELFISH AND PROSOCIAL REINFORCEMENT
LEARNING**

Myrthe Jansen¹, Jo Cutler², Patricia Lockwood²,
Ellen de Bruijn¹

¹Leiden University, ²University of Birmingham

2-098 | A 2.5% HYPERCAPNIC ENVIRONMENT AFFECTS VENTILATION BUT NOT BLOOD VELOCITY OR EXECUTIVE FUNCTION

Mustafa Shirzad, James Van Riesin, Benjamin Tari,
Nikan Behboodpour, Matthew Heath
Western University

2-100 | CIRCADIAN VARIATION IN PEDIATRIC AMBULATORY BLOOD PRESSURE: A META-ANALYSIS

Hillary Rowe, Neressa Noel, Jennifer McGrath
Concordia University

2-101 | INVESTIGATING MULTIPLE NEURAL MEASURES OF REWARD SENSITIVITY IN EARLY ADOLESCENCE USING TIME-FREQUENCY ANALYSIS

Seonwoo Hong, Anna Weinberg,
Simon Morand-Beaulieu
McGill University

2-102 | THE IMPACT OF LONG-TERM STRESSORS ON PHYSIOLOGICAL REACTIVITY TO DAILY STRESSORS

Sam Dutton¹, Patrick Hill², Zac Imel¹, Monika Lohani¹
¹University of Utah, ²Washington University, St. Louis

2-103 | A DIFFERENT RELATIONSHIP BETWEEN PHYSIOLOGY AND SYMPTOMS FOR SEXUAL AND GENDER MINORITIES

Scott McKernan¹, Wendy D'Andrea¹, Greg Siegle²
¹The New School for Social Research, ²University of Pittsburgh School of Medicine

Virtual Poster Session

Friday, September 30, 2022
11:30 a.m.-1:00 p.m. PDT.

VIRTUAL-001 | STARTLE HABITUATION PATTERN ON SHAPELETS IDENTIFIES INDIVIDUALS WITH LOW VAGALLY MEDIATED HEART RATE VARIABILITY

Xiao Yang, Yi He
Old Dominion University

VIRTUAL-002 | PHYSIOLOGICAL LINKAGE PREDICTS SUCCESSFUL EMOTION DETECTION WHILE VIEWING VIDEOS OF EMOTIONS COMMUNICATED VIA TOUCH

Heather Kissel, Alyssa Tsui, Mikaley Bolden, Deanna Driver, Bruce Friedman
Virginia Tech

VIRTUAL-003 | COGNITIVE REAPPRAISAL OF HIGH- AND LOW-CALORIE FOOD CUES IN RESTRAINED EATERS: A PRELIMINARY ERP INVESTIGATION

Matteo Giraldo¹, Marta Ghisi¹, Gioia Bottesi¹,
Michela Sarlo²
¹University of Padua, ²University of Urbino

VIRTUAL-004 | PHYSIOLOGICAL EVIDENCE OF ZOOM FATIGUE: THE EFFECT OF NON- AND MEDIATED HUMAN COMMUNICATION ON MENTAL EFFORT

Jingjing Han, Han Zhou
Fudan University

VIRTUAL-005 | INCREASES IN TRAFFIC VOLUME ARE ASSOCIATED WITH MEASURABLE CHANGES IN EEG IN URBAN CYCLING LANES

Daniel Robles, Kyle Mathewson
University of Alberta



VIRTUAL-006 | THE ROLE OF EMOTION REGULATION STRATEGIES IN THE RELATIONSHIP BETWEEN POSITIVE AFFECT AND THETA AND BETA BAND POWER: A RESTING STATE EEG STUDY

Arooj Abid, Matt Judah
University of Arkansas

VIRTUAL-007 | THE UNILATERAL FEEDBACK AFFECTS THE STIMULUS-PRECEDING NEGATIVITY (SPN) AND THE ANTERIOR INSULA: ERP AND FMRI STUDIES

Yoshimi Ohgami¹, Yasunori Kotani¹, Nobukiyo Yoshida², Hiroyuki Akai², Akira Kunimatsu³, Shigeru Kiryu³, Yusuke Inoue⁴
¹Tokyo Institute of Technology, ²The University of Tokyo, ³International University of Health and Welfare, ⁴Kitasato University

VIRTUAL-008 | MUSICAL TEMPO CHANGES THE ALPHA FUNCTIONAL CONNECTIVITY INVOLVED IN TIME ESTIMATION

Sergio Rivera-Tello, Rebeca Romo-Vázquez, Andrés González-Garrido, Julieta Ramos-Loyo
University of Guadalajara

VIRTUAL-009 | ASYMMETRIC ACTIVATION OF FRONTAL BRAIN REGIONS DURING COGNITIVE REAPPRAISAL GENERATION – A FUNCTION OF IMPLEMENTED REAPPRAISAL STRATEGY?

Corinna Perchtold-Stefan, Andreas Fink, Ilona Papousek
University of Graz

VIRTUAL-010 | ELECTROPHYSIOLOGICAL CORRELATES OF SOCIAL FEEDBACK PROCESSING IN HEALTHY AND DEPRESSIVE INDIVIDUALS

Sebastian Scholz¹, Sebastian Schindler^{1,2}, Johanna Kissler¹
¹Bielefeld University, ²University of Münster

VIRTUAL-011 | DIFFERENT ACTIVATION PATTERN BETWEEN THE LEFT AND RIGHT ANTERIOR INSULA EVOKED BY SWITCHING STIMULI WITH REWARD INFORMATION

Yasunori Kotani¹, Yoshimi Ohgami¹, Nobukiyo Yoshida², Hiroyuki Akai², Akira Kunimatsu³, Shigeru Kiryu³, Yusuke Inoue⁴
¹Tokyo Institute of Technology, ²The University of Tokyo, ³International University of Health and Welfare, ⁴Kitasato University

VIRTUAL-012 | SOCIAL SUPPORT AS A MEDIATOR BETWEEN ADHD STATUS AND BLOOD PRESSURE

Diana Heath¹, Chanelle Gordon²
¹University of California, Berkeley, ²Boys Town National Research Hospital

VIRTUAL-013 | CHARACTERISTICS IN MOTIVATIONAL SYSTEMS AND AFFECTIVE INFORMATION PROCESSING OF JAPANESE COLLEGE STUDENTS INTERESTED IN DRUG ABUSE

Satoko Kurita¹, Jun'ichi Katayama²
¹Kobe Women's University, ²Kwansei Gakuin University

VIRTUAL-014 | INDIVIDUAL DIFFERENCES IN MEMORY-GUIDED ATTENTION

Shimin Mo^{1,2}, Manda Fischer^{1,2}, Morris Moscovitch^{1,2}, Claude Alain^{1,2}
¹University of Toronto, ²Rotman Research Institute, Baycrest Hospital

VIRTUAL-015 | BLUNTED INSULA CORTICAL ACTIVATION DURING REWARD ANTICIPATION IN MAJOR DEPRESSIVE DISORDERS

Xi Ren¹, Evan White¹, Mariah Nacke¹, Elisabeth Akeman¹, Mallory Cannon¹, Ahmad Mayeli^{1,2}, James Touthang¹, Obada Al Zoubi^{1,3}, Timothy McDermott^{1,4}, Namik Kirlic¹, Jessica Santiago¹,

Rayus Kuplicki¹, Martin Paulus^{1,4}, Michelle Craske⁵,
Kate Wolitzky-Taylor⁵, James Abelson⁶, Christopher
Martell⁷, Ashley Clausen⁸, Robin Aupperle^{1,4},
Jennifer Stewart^{1,4}

¹Laureate Institute for Brain Research, ²University of
Pittsburgh, ³Harvard Medical School/McLean Hospital,
⁴University of Tulsa, ⁵University of California, Los Angeles,
⁶University of Michigan, ⁷University of Massachusetts,
Amherst, ⁸St. Vincent Hospital

VIRTUAL-016 | RECREATIONAL CANNABIS USE IS RELATED TO INCREASED NOCTURNAL HEART RATE VARIABILITY IN YOUNG AFRICAN AMERICAN COLLEGE STUDENTS IN THE ABSENCE OF DEPRESSION

Kimberly Bell¹, Niyana Rasayon², Kaleb Adams¹

¹North Carolina Agricultural and Technical State
University, ²University of the District of Columbia

VIRTUAL-017 | SEX-RELATED DIFFERENCES IN RESTING-STATE FUNCTIONAL CONNECTIVITY UNDER EMOTIONAL BURNOUT (RESISTENCE STAGE)

Sergii Tukaiev¹, Dmytro Harmatiuk², Anton Popov²,
Mykola Makarchuk¹

¹Taras Shevchenko National University of Kyiv, ²Igor
Sikorsky Kyiv Polytechnic Institute

VIRTUAL-018 | MODULATION OF EYEBLINK AND SKIN CONDUCTANCE RESPONSES TO A STARTLE PROBE BY PREPULSE AND AMBIENT ILLUMINATION

Xiao Yang, Jessica Inman, Kasie De Jesus,
Zulu Cameron

Old Dominion University

VIRTUAL-019 | LOUDNESS IS TIED TO STRONGER SKIN CONDUCTANCE AND AFFECTIVE RESPONSES OF AUDITORY PERCEPTION

Mercede Erfanian, Maria Chait, Tin Oberman,
Jian Kang

University College London (UCL)

VIRTUAL-020 | EMOTION REGULATION STRATEGIES DIFFERENTIALLY MODULATE NEURAL ACTIVITY ACROSS AFFECTIVE PREDICTION STAGES: AN HD-EEG INVESTIGATION

Fiorella Del Popolo Cristaldi¹, Giovanni Mento¹,
Giulia Buodo¹, Michela Sarlo²

¹University of Padua, ²University of Urbino Carlo Bo

VIRTUAL-021 | REDUCED NEURAL RESPONSE TO CUE AND FEEDBACK STIMULI IN THE MID TASK PREDICTS ADOLESCENT DEPRESSIVE SYMPTOMOLOGY

Brittney Thompson, Nicholas Santopetro, C.J. Brush,
Greg Hajcak

Florida State University

VIRTUAL-022 | THE ANTENATAL P300 AND LATE POSITIVE POTENTIAL PROSPECTIVELY PREDICT INCREASED POSTNATAL DEPRESSION AND ANXIETY

Elizabeth Mulligan¹, Jessica Simon¹, Magen Lowe²,
Nicholas Santopetro¹, Heather Flynn¹, Greg Hajcak¹

¹Florida State University, ²Washington State University

VIRTUAL-023 | EFFECT OF MUSICAL CHANGE AND COMPLEXITY ON HRV DURING LISTENING

Scott Leimroth, Frances De Blasio, Robert Barry, Timothy Byron
University of Wollongong

VIRTUAL-024 | MEDICAL FACE MASKS AFFECT CONFIGURAL AND EMOTIONAL FACE PROCESSING: EVIDENCE FROM THE N170 EVENT-RELATED POTENTIAL

Annika Lutz, Nora Welter, Katharina Dincher, Lynn Erpelding, Claus Vögele
University of Luxembourg

VIRTUAL-025 | LOW DEFENSIVE CARDIAC REACTIVITY AS A PHYSIOLOGICAL CORRELATE OF PSYCHOPATHIC FEARLESSNESS IN WOMEN

Victoria Branchadell, Pilar Segarra, Rosario Poy, Pablo Ribes-Guardiola, Javier Moltó
Jaume I University

VIRTUAL-026 | ANXIOUS ATTACHMENT INCREASES EMOTIONAL REACTIVITY FOLLOWING ROMANTIC RELATIONSHIP THREAT

Erin Palmwood, Elsa Baumgartner, Kendall McCracken, Brian Merski, Margaret Millar
University of Mary Washington

VIRTUAL-027 | THE EFFECT OF INTEROCEPTION ON UNINTENTIONAL THOUGHT SWITCHING

Mai Sakuragi, Satoshi Umeda
Keio University

VIRTUAL-028 | THE EFFECT OF RECENT FEEDBACK AND DECISION HISTORY ON THE REWARD POSITIVITY

Nathan Hager^{1,2}, Matt Judah³
¹Old Dominion University, ²Virginia Consortium Program in Clinical Psychology, ³University of Arkansas, Fayetteville

VIRTUAL-029 | OPTIMAL METHODOLOGY FOR THE IDENTIFICATION OF RESTING-STATE EEG CORRELATES OF NON-CLINICAL DEPRESSION AND ANXIETY

Clare O'Toole, Frances De Blasio, Robert Barry
University of Wollongong

VIRTUAL-030 | DO DOMAIN-GENERAL EXECUTIVE CONTROL DEMANDS IMPACT ELECTROPHYSIOLOGICAL CORRELATES OF SEMANTIC DISTANCE?

Karolina Rataj¹, Patrycja Kakuba¹, Walter van Heuven²
¹Adam Mickiewicz University, ²University of Nottingham

VIRTUAL-031 | STIMULUS-INDUCED CHANGES IN 1/F-LIKE ACTIVITY IN EEG

Mate Gyurkovics¹, Grace Clements², Kathy Low², Monica Fabiani², Gabriele Gratton²
¹University of Glasgow, ²University of Illinois, Urbana-Champaign

VIRTUAL-032 | NUMERICAL RATIO AND CONGRUENCE EFFECTS IN THE QUANTITY ESTIMATION: ERPS STUDY

Timofey Adamovich¹, Julia Marakshina², Yulia Kuzmina³, Marina Lobaskova²
¹Lomonosov Moscow State University, ²Psychological Institute of Russian Academy of Education, ³Higher School of Economics

VIRTUAL-033 | FEEDBACK NEGATIVITY AND FEEDBACK-RELATED P3 DURING THE MONETARY INCENTIVE DELAY TASK IN INDIVIDUALS AT HIGH AND LOW FAMILY RISK FOR DEPRESSION

Yifan Gao¹, Lidia Panier¹, Marc Gameroff^{1,2},
Randy Auerbach^{1,2}, Jonathan Posner^{1,2},
Myrna Weissman^{1,2}, Jürgen Kayser^{1,2}
¹New York State Psychiatric Institute, ²Columbia
University

VIRTUAL-034 | QUANTITY ESTIMATION IN THE BRAIN: POSSIBLE MECHANISMS

Timofey Adamovich¹, Julia Marakshina²,
Yulia Kuzmina³, Marina Lobaskova²
¹Lomonosov Moscow State University, ²Psychological
Institute of Russian Academy of Education, ³Higher
School of Economics

VIRTUAL-035 | NEUROPHYSIOLOGICAL CORRELATES OF REGULATORY CONTROL DEFICITS AMONG OFFSPRING AT RISK FOR DEPRESSION

Zhixin Zhou¹, Christina Koshy¹, Emma Millon²,
Sydney Taylor³, Catherine Monk^{2,3}, Rachel Marsh^{2,3},
Randy Auerbach^{2,3}, Akina Umemoto²
¹Teachers College, Columbia University, ²Columbia
University, ³New York State Psychiatric Institute

VIRTUAL-036 | BRAIN NETWORKS INVOLVED IN DECISION-MAKING ARE CHARACTERIZED BY HIGHER SEGREGATION AND LOWER INTEGRATION IN DEPRESSION

Ekaterina Slovenko, Andrey Kiselnikov, Alisa
Komarova, Irina Tan, Maria Yurlova, Dina Mitiureva
Lomonosov Moscow State University

VIRTUAL-037 | NEURAL OBJECT PROCESSING IN INFANTS AND ADULTS IS INFLUENCED BY THE PERSPECTIVE OF OTHERS

Anna-Lena Tebbe¹, Katrin Rothmaler¹, Moritz Köster²,
Charlotte Grosse Wiesmann¹
¹Max Planck Institute for Human Cognitive and Brain
Sciences, ²University of Regensburg

VIRTUAL-038 | SHIELDING CHIPS REDUCE EFFECTS ON EEG BRAIN ACTIVITY AND CONCENTRATIONAL PERFORMANCE INDUCED BY ELECTROMAGNETIC RADIATION IN THE 5G RANGE IN CAR DRIVING

Diana Henz
Stiftung für Gesundheit und Umwelt

VIRTUAL-039 | BRAIN NETWORKS DURING THE EMOTIONAL REGULATION TASK ARE HYPERCONNECTED IN DEPRESSION

Alisa Komarova, Andrey Kiselnikov, Irina Tan,
Ekaterina Slovenko, Maria Yurlova, Dina Mitiureva
Lomonosov Moscow State University

VIRTUAL-040 | BRAIN NETWORKS RANDOMIZE DURING PROVOKING RUMINATION IN FEMALE DEPRESSION: AN EEG STUDY

Irina Tan, Andrey Kiselnikov, Alisa Komarova,
Ekaterina Slovenko, Maria Yurlova, Dina Mitiureva
Lomonosov Moscow State University

VIRTUAL-041 | INTELLIGENCE NEGATIVELY CORRELATES WITH BETA-BAND EEG NETWORK CHARACTERISTIC PATH LENGTH IN COGNITIVE LOAD

Maxim E. Mikheykin, Andrey A. Kiselnikov, Tatyana A.
Gorshkova, Anna E. Vovnenko, Ekaterina I. Demkina,
Anastasia A. Korobkova, Ekaterina M. Usaeva, Dina G.
Mitiureva, Alisa V. Komarova
Lomonosov Moscow State University

VIRTUAL-042 | MINDFULNESS MEDITATION IS ASSOCIATED WITH INCREASED CLUSTERING COEFFICIENT AND SMALL-WORLD INDEX IN EEG THETA-BAND

Ekaterina Golova, Andrey Kiselnikov, Alexandra Pokidko, Sofya Skripkina, Dina Mitiureva, Alisa Komarova

Lomonosov Moscow State University

VIRTUAL-043 | HEART RATE VARIABILITY BIOFEEDBACK REDUCES ANXIETY SENSITIVITY IN YOUNG HEALTHY INDIVIDUALS

Miriam Hufenbach^{1,2}, Carlos Ventura Bort¹, Alfons Hamm², Mathias Weymar¹, Julia Wendt¹

¹University of Potsdam, ²University of Greifswald

VIRTUAL-044 | THIS PERSON IS DANGEROUS! ENHANCED DEFENSIVE PSYCHOPHYSIOLOGICAL RESPONDING TO INSTRUCTED AND REVERSED THREAT PERSONS

Florian Bublatzky, Inga Niedtfeld, Christian Schmahl

Central Institute of Mental Health

VIRTUAL-045 | CONTEXT-INDUCED EMOTION RESPONSES TO NEUTRAL WORDS ALTER SUBSEQUENT BRAIN RESPONSES TO THESE WORDS: EVIDENCE FROM BRAIN POTENTIALS

Wei-Hung Lin, Po-Heng Chen, Chia-Lin Lee

National Taiwan University

VIRTUAL-046 | PHYSIOLOGICAL OR SELF-REPORTED AROUSAL: THE IMPACT ON SEXUAL DECISION MAKING

Hedwig Eisenbarth, Joseph Savio, Natasha Knack

Victoria University of Wellington

VIRTUAL-047 | ALTRUISM IS LINKED TO PROLONGED N170 LATENCY TO SCARED FACES AND REDUCED SMALL-WORLDNESS IN EEG FUNCTIONAL CONNECTIVITY

Dina Mitiureva, Andrey Kiselnikov, Veronika Zubko, Polina Kabanova, Evgenia Terlichenko, Vasilisa Abrosimova, Elizaveta Krivchenkova, Daria Verkhola, Sofya Skripkina, Varvara Udartseva, Alisa Komarova

Lomonosov Moscow State University

VIRTUAL-049 | THE P300 DURING A GO/NO-GO TASK IN ADOLESCENT DEPRESSION: WITHIN-TASK CHANGE AND AVERAGE AMPLITUDE DIFFERENTIALLY RELATE TO ANHEDONIA AND NEGATIVE MOOD

Alexander Kallen, Christopher Brush, Christopher Patrick, Greg Hajcak

Florida State University

VIRTUAL-050 | FROM HANDS TO HEART: A TREND FOR HIGHER INTEROCEPTIVE ACCURACY IN LEFT-HANDED AS COMPARED TO RIGHT-HANDED FEMALE PARTICIPANTS

Sam Bernard, Meggie Barnabo, Mareike Boos, Franziska Leufgen, Jessica Goergen, Emily Schramm, Joy Steinmetzer, André Schulz

University of Luxembourg

VIRTUAL-051 | THE RELATIONSHIP BETWEEN TRAUMATIC BRAIN INJURY AND DISRUPTIONS IN HEART RATE VARIABILITY: A SYSTEMATIC REVIEW

Leah Talbert, Zoey Kaelberer, Emma Gleave, Annie Driggs, Ammon Driggs, Patrick Steffen, Michael Larson

Brigham Young University

VIRTUAL-052 | TRAIT MEANNESS PREDICTS BLUNTED TOP-DOWN ATTENTION TO AFFECTIVE MATERIAL: EVIDENCE FROM THE LATE POSITIVE POTENTIAL

Pablo Ribes-Guardiola¹, Carlos Ventura-Bort², Victoria Branchadell¹, Rosario Poy¹, Pilar Segarra¹, Javier Moltó¹

¹Universitat Jaume I, ²University of Potsdam

**VIRTUAL-053 | IT GETS OLD QUICK:
EDA DRIVEN BY NOVELTY-HABITUATION
RESPONSE PATTERN**

Brittany Nackley, Bruce Friedman
Virginia Tech

**VIRTUAL-054 | A STUDY OF TWO MODELS OF
ANALYSIS OF FUNCTIONAL NEUROIMAGING
DATA DURING THE PROCESSING OF AVERSIVE
AND NEUTRAL PICTURES**

Aline Bastos, Aline Cardoso, Eliane Volchan, Fatima
Erthal
Federal University of Rio de Janeiro

**VIRTUAL-055 | VISUAL-VESTIBULAR
SENSORY CONFLICT IN VIRTUAL REALITY:
CHANGES IN THE BALANCE SYSTEM**

Artem Kovalev, Anna Ganicheva
Lomonosov Moscow State University

**VIRTUAL-056 | AUTONOMIC CONTROL
UNDER THREAT IN A 2-DIMENSIONAL SPACE**

Lily Seah, Youngjin Cho, Brittany Nackley, Pang Du,
Bruce Friedman
Virginia Polytechnic Institute and State University

**VIRTUAL-057 | THE ASSOCIATION OF N2 ERP
AMPLITUDES WITH HARSH PARENTING AND
INHIBITORY CONTROL IN EARLY CHILDHOOD**

Benjamin Swanson, Alexis Hosch, Isaac Petersen
University of Iowa

**VIRTUAL-058 | TRAINING THE SKILL OF
TURNS IN VIRTUAL REALITY REDUCES THE
SEVERITY OF SIMULATOR SICKNESS**

Artem Kovalev, Arina Rakhimova, Elizaveta Luniakova,
Margarita Belousova
Lomonosov Moscow State University

**VIRTUAL-059 | SHIELDING CHIPS
REDUCE EFFECTS ON EEG BRAIN
ACTIVITY, IMMUNE FUNCTIONS, AND
MITOCHONDRIAL BIOENERGETICS INDUCED
BY ELECTROMAGNETIC RADIATION IN THE 5G
RANGE**

Diana Henz
Stiftung für Gesundheit und Umwelt

**VIRTUAL-060 | METHODOLOGICAL
ADVANCES IN MACHINE LEARNING
APPROACHES TO DECODING COGNITIVE TASKS
IN NEUROIMAGING DATA**

Corey Richier, Kyle Baacke, Sarah Olshan, Wendy Heller
University of Illinois, Urbana-Champaign

**VIRTUAL-061 | INDIVIDUAL EYE
MOVEMENT STRATEGIES IN HOLISTIC FACE
PROCESSING**

Anna Pichugina, Galina Menshikova
Lomonosov Moscow State University

**VIRTUAL-062 | HEART RATE VARIABILITY
IN MOTHERS AND THEIR 12-MONTH-OLD
INFANTS: CONSIDERATION OF RELIABILITY
AND INTERGENERATIONAL ASSOCIATIONS**

Paul Fitzgerald¹, Kaylin Hill², Wei Neo¹,
Carolyn McCormick¹, Dan Foti¹, Bridgette Kelleher¹
¹Purdue University, ²Vanderbilt University

**VIRTUAL-063 | FASTING MODIFIES
QUANTITATIVE EEG MEASURES AND SLOWS
COGNITIVE PROCESSING SPEED**

Adrián Ávila-Garibay, Hugo Vélez-Pérez, Geisa
Gallardo-Moreno, Andrés González-Garrido
University of Guadalajara

VIRTUAL-064 | EXPERIENTIAL, EXPRESSIVE, AND PHYSIOLOGICAL EFFECTS OF POSITIVE AND NEGATIVE EMOTION REGULATION GOALS WHILE REAPPRAISING DISGUSTING STIMULI

Alexander Bruckhaus¹, Sylvia Kreibitz²,
Andrea Samson^{3,4}, James Gross²

¹University of Southern California, ²Stanford University,

³UniDistance Suisse, ⁴University of Fribourg

VIRTUAL-065 | DOES THE RECOGNITION POTENTIAL DISPLAY THE FREQUENCY BY REGULARITY INTERACTION?

Mariah McLaren, Joseph Dien, Donald Bolger
University of Maryland, College Park

VIRTUAL-066 | USING VIRTUAL REALITY TO EXAMINE PATTERNS OF PHYSIOLOGICAL ACTIVATION ASSOCIATED WITH EXPERIENCING 'AWE'

Lauren Pritchard, Chris Maymon, Gina Grimshaw
Victoria University of Wellington

VIRTUAL-067 | CARDIAC INTEROCEPTIVE ABILITY MODERATES THE EFFECT OF SNS BUT NOT PNS REACTIVITY ON SOCIAL JUDGMENT DURING STRESS

Mallory Feldman¹, Urvi Patel¹, Jennifer MacCormack²,
Adrienne Bonar¹, Kristen Lindquist¹

¹University of North Carolina, Chapel Hill, ²University of Pittsburgh

VIRTUAL-068 | COMPARING HEART RATE ANALYTICAL METHODS TO EXAMINE THERAPEUTIC ENGAGEMENT DURING IMAGINAL PROLONGED EXPOSURE THERAPY FOR PTSD: A MULTI-CASE STUDY

Allison Altman^{1,2}, Alexandra Cowden Hindash^{3,4},
Julia Levitan⁵, Sabra Inslicht^{3,4}

¹University of California, Berkeley, ²VA Palo Alto Health Care System, ³San Francisco VA Medical Center,

⁴University of California, San Francisco, ⁵Washington University, St. Louis

VIRTUAL-069 | DISSOCIABLE SIGNATURES OF DYNAMIC AUTONOMIC ACTIVITY DURING EVOKED EMOTIONS AND REST

Lorenzo Pasquini¹, Fatemeh Noohi¹, Christina Veziris¹,
Eena Kosik¹, Alex Lee¹, Jesse Brown¹, Sarah Holley²,
Bruce Miller¹, Manish Saggar³, William Seeley¹,
Virginia Sturm¹

¹University of California, San Francisco, ²San Francisco State University, ³Stanford University

VIRTUAL-070 | CARDIOVASCULAR PAIN REGULATION AND THE BUFFERING EFFECT OF SOCIAL SUPPORT IN INDIVIDUALS WITH CHRONIC PAIN

Marie Neubert¹, Maria Kleinstäuber², Eric Garland³

¹University of Siegen, ²Utah State University, ³University of Utah

VIRTUAL-071 | A MULTILEVEL EXAMINATION OF RESPIRATORY SINUS ARRHYTHMIA AND AGGRESSIVE BEHAVIOR THROUGHOUT AN INTERPERSONAL CONFLICT

Donald Godfrey, Darian Reynero, Elizabeth Walla, Julia Babcock

University of Houston

VIRTUAL-072 | TIME FREQUENCY ANALYSIS REVEALS THETA-RELATED SALIENCE AND DELTA-RELATED VALENCE EFFECTS TO APPETITIVE AND AVERSIVE OUTCOMES

Heather Webber¹, James Cavanagh², Geoffrey Potts³

¹University of Texas Health Science Center, Houston,

²University of New Mexico, ³University of South Florida

VIRTUAL-073 | UNDERSTANDING THE EFFECTS OF EFFORT AND EXPECTANCY ON THE P300

Jessica Simon, Nicholas Santopetro, Greg Hajcak
Florida State University

VIRTUAL-074 | THREAT GENERALIZATION OVER VISUAL OUTGROUP INDIVIDUALS AND MISPERCEIVED FACIAL SIMILARITY

Niclas Willscheid, Florian Bublatzky
Central Institute of Mental Health

VIRTUAL-075 | COMPARING PHYSIOLOGICAL STRESS ANALYSIS APPROACHES: MEAN ESTIMATE COMPARISONS VERSUS TRAJECTORY ANALYSIS

Kyle Rawn, Peggy Keller
University of Kentucky

VIRTUAL-076 | DIMINISHED "PREPARATORY" CARDIOVASCULAR RESPONSES TO UPCOMING EMOTIONAL STIMULI CONTRIBUTE TO INCREASED DISINHIBITION IN FRONTOTEMPORAL LOBAR DEGENERATION SYNDROMES

Kuan-Hua Chen¹, Alice Hua^{1,2}, Gianina Toller², Sandy Lwi¹, Marcela Otero^{1,3,4}, Claudia Haase⁵, Katherine Rankin², Howard Rosen², Bruce Miller², Robert Levenson¹
¹University of California, ²University of California, San Francisco, ³Stanford University School of Medicine, ⁴Veterans Affairs Palo Alto Health Care System, ⁵Northwestern University

VIRTUAL-077 | DEVELOPMENTAL CHANGES OF THE TOPOGRAPHICAL N170 DURING SPATIAL PROCESSING OF REWARDS IN NEUROTYPICAL CHILDREN AND PEDIATRIC CANCER SURVIVORS

Mei-Heng Lin¹, Sally Cole², Peter Cole^{1,3}, Miriam Rosenberg-Lee¹, Nicole Lalta¹, Travis Baker¹.
¹Rutgers University, Newark, ²Florida State University, ³Rutgers Cancer Institute of New Jersey

VIRTUAL-078 | REDUCTIONS IN CHILDHOOD DOORS-LOCKED P300 AMPLITUDE PREDICTS INCREASED RISK FOR DEPRESSIVE DISORDERS DURING ADOLESCENCE

Nicholas Santopetro¹, Christopher Brush¹, Brady Nelson², Greg Hajcak¹, Daniel Klein²
¹Florida State University, ²Stony Brook University

VIRTUAL-079 | THE SPECIFIC REACTIVITY OF FACIAL SKIN BLOOD FLOW WHEN OBSERVING OTHERS' EMOTIONAL FACES

Naoki Ishikawa¹, Masato Asahina², Satoshi Umeda¹
¹Keio University, ²Kanazawa Medical University

VIRTUAL-080 | EMOTIONAL SALIENCE OF POSITIVE AND NEGATIVE ASPECTS OF CANNABIS USE IN CANNABIS USE DISORDER: THE DEVELOPMENT OF A NOVEL SELF-REFERENTIAL PROCESSING TASK USING THE LATE POSITIVE POTENTIAL

Brandon Schermitzler, Richard Macatee
Auburn University

VIRTUAL-081 | USE OF ADVANCED DIFFUSION WEIGHTED IMAGING TECHNIQUES TO MEASURE NEUROINFLAMMATION: A RANDOMIZED CROSSOVER STUDY

Julia Plank¹, Catherine Morgan¹, Frederick Sundram¹, Nicholas Hoeh¹, Flavio Dell'Acqua², Suresh Muthukumaraswamy¹, Joanne Lin¹
¹University of Auckland, ²King's College London

VIRTUAL-082 | PSYCHOMETRIC PROPERTIES OF REWARD-RELATED EVENT-RELATED POTENTIALS IN OLDER ADULTS

Lauren Keith¹, C.J. Brush¹, Greg Hajcak¹, Dimitris Kiosses², Natalie Sachs-Ericsson¹
¹Florida State University, ²Weill-Cornell Institute of Geriatric Psychiatry

VIRTUAL-083 | THE ROLE OF THE MEDIAL PREFRONTAL CORTEX IN SELF-DECEPTION AND AFFECT: A TRANSCRANIAL MAGNETIC STIMULATION STUDY

Nathira Ahmad, Claudia Siertzputowski, Samantha Zorns, Matthew Pardillo, Adriana LaVarco, Julian Keenan

Montclair State University

VIRTUAL-084 | TRANSCRANIAL MAGNETIC STIMULATION AND EVENT RELATED POTENTIALS INDICATE INCREASED SELF-AWARENESS MAY INFLUENCE DEEP LEARNING

Julian Keenan, Ilse Wambacq, Mika Munakata, Ashuwin Vaidya

Montclair State University

Poster Session 3

Friday, September 30, 2022

Regency Ballroom C

8:00 a.m.–9:00 a.m. Posters Assembled

9:00 a.m.–6:00 p.m. Posters Available for Viewing

6:00 p.m.–8:00 p.m. Authors Present for Discussion and Questions

8:00 p.m.–8:30 p.m. Dismantle Posters.

3-002 | HOW DO ADOLESCENTS ADJUST TO THEIR EVER-CHANGING ENVIRONMENT? EVIDENCE FROM EVENT-RELATED POTENTIALS DURING A REVERSAL LEARNING PARADIGM

Corinna Lorenz^{1,2}, Jutta Kray¹

¹Saarland University, Germany, ²University of Wuppertal

3-004 | VARIABILITY IN ATTENTION PREPARATION EXPLAINS WORKING MEMORY FAILURES IN ADHD

Sarah Karalunas¹, Jason Dude¹, Lauren Shiro¹, Brittany Alperin², McKenzie Figuracion¹

¹Purdue University, ²Lawrence University

3-005 | RELATIONSHIPS BETWEEN IMPULSIVITY AND FRONTAL ASYMMETRY DURING MOTIVATIONAL CONFLICT

Micayla Lacey¹, Christopher Wendel¹, Philip Gable²

¹The University of Alabama, ²University of Delaware

3-006 | UNCOVERING COVERED EXPRESSIONS: NEW EVIDENCE ON EMOTIONAL MIMICRY DURING THE COVID-19 PANDEMIC

Till Kastendieck, Nele Dippel, Ursula Hess, Julia Asbrand

Humboldt-Universität zu Berlin

3-007 | MEMORY FOR VOICES. ASSESSING NEURAL CORRELATES AND INDIVIDUAL DIFFERENCES

Romi Zäske^{1,2}, Stefan Schweinberger²

¹Jena University Hospital, ²Friedrich Schiller University Jena

3-008 | SIGNALING UNPAIRED UNCONDITIONAL STIMULI DURING EXTINCTION DOES NOT REDUCE THEIR EFFECT TO STRENGTHEN EXTINCTION LEARNING

Ottmar Lipp¹, Luke Ney¹, Camilla Luck², Allison Waters³, Michelle Craske⁴

¹Queensland University of Technology, ²Curtin University, ³Griffith University, ⁴University of California

3-010 | WHO KNOWS DIGITAL ADDICTS CAN (SOMEHOW) BE DIGITALLY SMARTER: AN ERP STUDY OF NUMERICAL STROOP TASK

Qiduo Lin¹, Bing Li¹, Hoi Yan Mak¹, Ovid J.L. Tzeng^{1,2}, Chih-Mao Huang³, Hsu-Wen Huang¹

¹City University of Hong Kong, ²National Taiwan Normal University, ³National Yang Ming Chiao Tung University

3-011 | THE EFFECTS OF GOSSIP ON AUTONOMIC ACTIVITY BETWEEN FRIENDS

Konrad Rudnicki, Karolien Poels, Charlotte De Backer
University of Antwerp

3-012 | EMPIRICAL TESTING OF AN ALLOSTASIS-BASED MODEL OF NEUROFEEDBACK TRAINING: A RE-ANALYSIS

Arash Mirifar^{1,2}, Andreas Keil³, Felix Ehrlenspiel¹
¹*Technische Universität München*, ²*Leibniz Universität Hannover*, ³*University of Florida*

3-013 | TRAIT OPENNESS TO EXPERIENCE IN OLDER ADULTS IS ASSOCIATED WITH HIGHER MEMORY BRAIN-NETWORK INTEGRITY AND SUCCESSFUL VISUAL MEMORY ENCODING

Christopher Stolz¹, Ariane Bulla¹, Joram Soch^{2,3}, Björn Schott^{1,2,4}, Anni Richter¹
¹*Leibniz Institute for Neurobiology (LIN)*, ²*German Center for Neurodegenerative Diseases (DZNE)*, ³*Bernstein Center for Computational Neuroscience (BCCN)*, ⁴*University Medical Center Göttingen*

3-014 | STRATEGIC RESCHEDULING OF ERROR MONITORING IN DUAL-TASKING

Peter Löschner, Robert Steinhauser, Marco Steinhauser
Catholic University of Eichstätt-Ingolstadt

3-015 | ALTERED BRAIN-HEART INTERPLAY DURING THE ELABORATION OF NEGATIVE VALENCE IMAGES IN SUBTHRESHOLD DEPRESSION

Francesca Mura¹, Vincenzo Catrambone², Gaetano Valenza², Claudio Gentili¹, Elisabetta Patroni¹
¹*University of Padua*, ²*University of Pisa*

3-016 | DIFFERENCES IN ELECTROPHYSIOLOGICAL CORRELATES OF DISTANCE-TO-NORM AND FAMILIARITY BETWEEN HIGH AND LOW PERFORMERS IN FACE RECOGNITION

Anna Schroeger^{1,2}, Linda Ficco^{1,3}, Stella Faerber^{1,4}, Jürgen Kaufmann¹, Stefan Schweinberger^{1,3}
¹*Friedrich Schiller University Jena*, ²*Justus Liebig University Giessen*, ³*Max-Planck Institute for the Science of Human History*, ⁴*Infinite Potential Institute LLC*

3-017 | EFFICACY AND SUSTAINABILITY OF A ONE-WEEK ERROR SENSITIVITY TRAINING ON THE ERROR-RELATED NEGATIVITY

Kai Härpfer, Franziska Kausche, Anja Riesel
University of Hamburg

3-018 | IDENTIFYING THE SOURCE OF THE REWARD POSITIVITY: TWO PATIENT STUDIES INVOLVING CORTICAL LESIONS AND INTRACRANIAL RECORDING

Joyce Oerlemans^{1,2}, Ricardo Alejandro¹, Dimitri Hemelsoet², Alfred Meurs^{1,2}, Paul Boon^{1,2}, Veerle De Herdt^{1,2}, Clay Holroyd¹
¹*University of Ghent*, ²*University Hospital Ghent*

3-019 | DYNAMIC CHANGES IN HEART RATE VARIABILITY UNDER THREAT

Joe Cornes¹, Christopher Maymon¹, Kealagh Robinson², Jeremy Meier³, Andre Botes¹, Gina Grimshaw¹
¹*Victoria University of Wellington*, ²*Curtin University*, ³*University of Melbourne*

3-020 | CAPTURING THE DYNAMICS: THE STATISTICAL CHALLENGES OF DYADIC PHYSIOLOGICAL SYNCHRONY

Fabiola Diana¹, Julia Folz¹, Elio Sjak-Shie¹, Ruud Hortensius², Mariska Kret¹
¹*Leiden University*, ²*Utrecht University*

3-021 | DISSECTING THE TEMPORAL DYNAMICS OF MOTIVATIONAL AND CONSUMMATORY REWARD PROCESSING DEFICITS IN DEPRESSION

Colin Bowyer, C.J. Brush, Christopher Patrick, Greg Hajcak
Florida State University

3-022 | ASSOCIATIVE LEARNING EFFECTS AND THE VISUAL HIERARCHY: WHERE ARE THEY NOW?

Maeve Boylan, Andreas Keil
University of Florida

3-023 | META-ANALYSIS OF FRONTAL EEG ASYMMETRY DURING EMOTIONAL PICTURE AND FILM VIEWING

Katie Garrison¹, Brandon Schmeichel²,
Cassandra Baldwin², Eddie Harmon-Jones³
¹University of Alabama, ²Texas A&M University, ³The
University of New South Wales

3-024 | THE INFLUENCE OF EXPOSURE TO DIFFERENT DOSAGES OF NATURE ON REWARD PROCESSING

Amy McDonnell, Sara LoTempio, David Strayer
University of Utah

3-025 | DETECTING STRESS USING HEART RATE AND NEURAL ACTIVITY: TOWARDS INDIVIDUALIZED WORKPLACE STRESS REDUCTION TECHNIQUES

Kunjoon Byun^{1,2}, Colin West³, Kevin Mazurek^{1,2}
¹Well Living Lab, ²Delos Living LLC, ³Mayo Clinic

3-026 | NEITHER REAPPRAISAL NOR SUPPRESSION STRATEGIES EFFECTIVELY REGULATE FEAR RESPONSES TO HEIGHT EXPOSURE IN VIRTUAL REALITY

Christopher Maymon, Joe Cornes, Andre Botes, Anna Markovitz, Nicholas Heyworth, Matthew Crawford, Gina Grimshaw
Victoria University of Wellington

3-027 | RESTING STATE NETWORK FUNCTIONAL CONNECTIVITY IN THE DYING BRAIN USING EEG

Elizabeth Blundon¹, Romyne Gallagher^{1,2}, Lawrence Ward¹
¹University of British Columbia, ²Providence Health Care

3-028 | NONINVASIVE EXCITATORY STIMULATION OF THE VENTROMEDIAL PREFRONTAL CORTEX INCREASES POSITIVE SELF-REFERENCING OF EMOTIONAL ADJECTIVES

Alejandro Espino-Payá¹, Thomas Kroker¹,
Sabine Prantner², M. Carmen Pastor², Johanna Kißler³,
Markus Junghöfer¹
¹University of Münster, ²University Jaume I, ³University of
Bielefeld

3-029 | ASSOCIATIONS BETWEEN PHYSICAL ACTIVITY, SEDENTARY BEHAVIOR, AND THE P300 DURING ADOLESCENCE

C.J. Brush, Nicholas Santopetro, Alexander Kallen,
Kreshnik Burani, Alissa Winkler, Greg Hajcak
Florida State University

3-030 | RELIABILITY OF CORTICAL SIGNAL PROCESSING IS DRIVEN BY GLUTAMATE MATURATION AND SUPPORTS WORKING MEMORY DEVELOPMENT

Shane McKeon, Finnegan Calabro, Maria Perica, Beatriz Luna
University of Pittsburgh

3-031 | ATTENTIONAL PRECURSORS OF DISTRACTOR ERRORS PREDICT ERROR- RELATED BRAIN ACTIVITY

Martin Maier, Marco Steinhauser
Catholic University of Eichstätt-Ingolstadt

3-032 | BASELINE PARASYMPATHETIC FUNCTIONING IS ASSOCIATED WITH VACCINE- INDUCED CHANGES IN SOCIAL ATTENTION AND MOTIVATION

Kelly Faig¹, Greg Norman²
¹*Hamilton College*, ²*The University of Chicago*

3-033 | STEADY-STATE VISUAL EVOKED POTENTIALS IN COLOR-SELECTIVE ATTENTION TO MID-COMPLEX PATTERNS

Christian Panitz^{1,2}, Christopher Gundlach¹,
Andreas Keil², Matthias Müller¹
¹*University of Leipzig*, ²*University of Florida*

3-034 | THE EFFECT OF VIBRATION THERAPY ON NEUROELECTRIC AND BEHAVIORAL INDICES OF INHIBITION IN CHILDREN WITH ADHD

Lauren Bullard, Colt Coffman, Abigail Brooks, Bailey
Honeycutt, Matthew Pontifex
Michigan State University

3-036 | INVESTIGATING ELECTROPHYSIOLOGICAL CORRELATES OF PREDICTION UPDATING IN A TWO-DAY READING STUDY

Ryan Hubbard, Kara Federmeier
University of Illinois, Urbana-Champaign

3-037 | REPLACING HIGH-PASS FILTERS WITH BLINK-IDENTIFIED ROBUST DETRENDING: PUT A BIRD ON IT!

Ryan Hubbard, Kara Federmeier
University of Illinois, Urbana-Champaign

3-038 | RESTING STATE EEG FUNCTIONAL CONNECTIVITY IN NONVERBAL LEARNING DISABILITY (NVLD)

Ambra Coccaro, Maria Di Bono, Rachele Lievore,
Camilla Orefice, Irene Mammarella, Mario Liotti
University of Padova

3-039 | EFFECTS OF MINDFULNESS PRACTICE ON SYMPATHETIC NERVOUS RESPONSE IN GRADUATE STUDENTS

Megan Chang, Megan Karburn, Alexandra Kautz, Elaine
Lau, Maiko Ibay, Sarah Hagen, Stephanie Geneza
San Jose State University

3-041 | CHARACTERIZING THE TEMPORAL DYNAMICS OF VISUOCORTICAL AVERSIVE GENERALIZATION LEARNING WITH SOCIAL CUES

Jourdan Pouliot, Richard Ward, Faith Gilbert, Skylar
McIlvanie, Payton Chiasson, Andreas Keil
University of Florida

3-042 | ELECTROPHYSIOLOGICAL RECORDING DURING REAL-WORLD GOAL- DIRECTED NAVIGATION USING AUGMENTED REALITY

Jaleesa Stringfellow, Mei-Heng Lin, Omer Liran, Travis
Baker
Rutgers University

3-043 | SELF-REPORTED AND FACIAL EMG DIFFERENCES IN NEGATIVE EMOTIONAL EXPRESSION BY BLACK AND WHITE AMERICANS IN THE MIDLIFE IN THE UNITED STATES (MIDUS) STUDY

Anna Finley¹, Cassandra Baldwin²,
Carien van Reekum³, Richard Davidson¹,
Stacey Schaefer¹
¹*University of Wisconsin, Madison*, ²*Texas A&M
University*, ³*University of Reading*

3-044 | THREAT DIFFERENTIALLY AFFECTS ALERTING AND EXECUTIVE CONTROL NETWORKS: EVIDENCE FROM EVENT RELATED POTENTIALS DURING AN ATTENTION NETWORK TEST UNDER THREAT OF SHOCK

James Yancey^{1,2}, Danielle Jones³, Keenan Roberts³, Christopher Patrick³

¹Rocky Mountain MIRECC (Salt Lake City VA),

²University of Utah School of Medicine, ³Florida State University

3-045 | NETWORK ANALYSIS OF PHYSIOLOGICAL INDICATORS OF STRESS

Laura Hazlett, Samuel West, Nicholas Thomson, Roxann Roberson-Nay

Virginia Commonwealth University

3-046 | RELIABILITY OF EYE TRACKING BASED MEASURES OF ATTENTIONAL BIAS IN THE SCRAMBLED SENTENCE TASK

Dahlia Kassel, Caleb Coughtry-Carpenter, John Foley, Andrew Hauler, Siraj Lyons, Josh Carlson, Lin Fang
Northern Michigan University

3-047 | IMPACT OF REDUCED DIMENSIONALITY INDEPENDENT COMPONENTS ANALYSIS ON EVENT-RELATED POTENTIAL DATA QUALITY

Victor Pokorny^{1,2}, Eric Rawls², Scott Sponheim^{1,2}

¹Minneapolis VA Health Care System, ²University of Minnesota

3-048 | TELL ME SOMETHING I DON'T KNOW: INFLUENCES OF WORLD KNOWLEDGE, CONTEXTUAL FIT, AND LINGUISTIC REGULARITY ON LANGUAGE COMPREHENSION

Emily Mech, Jon Willits, Kara Federmeier
University of Illinois, Urbana-Champaign

3-049 | OFFLINE CONSOLIDATION OF HUMAN FEAR MEMORY DOES NOT BENEFIT FROM SLEEP

Boris Kotchoubey¹, Yuri Pavlov^{1,2}, Nadezhda Pavlova^{1,2}, Susanne Diekelmann^{1,3}

¹University of Tuebingen, ²Ural Federal University,

³University Hospital Tübingen

3-050 | THE EFFECTS OF CLINICAL ANXIETY ON MULTI-DIMENSIONAL NEUROPHYSIOLOGICAL MECHANISMS OF APPROACH PREPARATION AND MOTIVATION

Danielle Taylor, Christopher Sege, Lisa McTeague
Medical University of South Carolina

3-051 | DISTINCT ERP MEASURES AS INDICATORS OF BROADER VERSUS NARROWER DIMENSIONS OF PSYCHOPATHOLOGY

Christopher Patrick¹, Keanan Joyner², Colin Bowyer¹, Pablo Ribes-Guardiola³

¹Florida State University, ²University of California, Berkely, ³Jaume I University

3-052 | ESTIMATION OF COGNITIVE OVERLOAD STATE FROM PUPIL SIZE AND OSCILLATORY BRAIN ACTIVITY

Yuri Pavlov^{1,2}, Anastasia Gashkova¹, Dauren Kasanov¹, Alexander Kotyusov¹, Alexandra Kosachenko¹

¹Ural Federal University, ²University of Tuebingen

3-053 | ON THE EFFECT OF THE PSYCHOSOCIAL CONTEXT ON PLACEBOHYPOALGESIA - PSYCHOLOGISTS VS. PHYSICIANS

Philipp Reicherts, Katharina Lembke, Miriam Kunz
University of Augsburg

3-054 | RECORDING EEG FROM HOME WITH NO TECHNICIAN ON SITE: THE DEVELOPMENT OF A NOVEL REMOTE, HOME-BASED EEG PROTOCOL FOR FAMILIES AFFECTED BY ANGELMAN SYNDROME

Kimberly Gálvez-Ortega, Roslyn Harold, Amanda Austin, Bridgette Kelleher, Dan Foti
Purdue University

3-055 | RECONCEPTUALIZING THE REWARD POSITIVITY AS A TEMPORALLY INDEPENDENT AND ADDITIVE DELTA SPECTRAL FEATURE

Trevor Jackson¹, Darin Brown², James Cavanagh¹
¹*University of New Mexico*, ²*Pitzer College*

3-056 | FROZEN WITH FRIGHT? INHIBITORY CONTROL DURING A VIRTUAL PLANK-WALK

Gina Grimshaw, Jordan Schulde, Asha Strom, Christopher Maymon, Andre Botes, David Carmel
Victoria University of Wellington

3-057 | MEASUREMENT PROPERTIES OF HEART RATE VARIABILITY IN VIRTUAL REALITY

Gabriela Revi¹, Sazedul Alam², Nilanjan Banerjee², Ryan Robucci², Scott Kerick³, Derek Spangler¹
¹*Pennsylvania State University*, ²*University of Maryland Baltimore County*, ³*CCDC US Army Research Laboratory*

3-058 | CONTROL, MOTIVATION, AND THE ADJUSTMENT OF RACE-BIASED RESPONDING

Paul Brancalone¹, Roberto Cofresi¹, Tiffany Ito², Bruce Bartholow¹
¹*University of Missouri*, ²*University of Colorado, Boulder*

3-059 | RESTING MULTISPECTRAL CONNECTIVITY DIFFERENCES ACROSS DEVELOPMENT

Nathan Petro¹, Christine Embury^{1,2}, Lauren Ott¹, Samantha Penhale¹, Maggie Rempel^{1,3}, Giorgia Picci¹, Yu-Ping Wang⁴, Julia Stephen⁵, Vince Calhoun^{5,6}, Gaelle Doucet¹, Tony Wilson^{1,7}
¹*Boys Town National Research Hospital*, ²*University of Nebraska, Omaha*, ³*University of Nebraska Medical Center*, ⁴*Tulane University*, ⁵*Mind Research Network*, ⁶*Georgia State University*, ⁷*Creighton University*

3-060 | INTEGRATING EEG AND FMRI ESTIMATES OF ERROR MONITORING TO PREDICT FUTURE ANXIETY CHANGES AMONG BEHAVIORALLY INHIBITED ADOLESCENTS

Emilio Valadez¹, John Richards², Stefania Conte², Marco McSweeney¹, Enda Tan¹, George Buzzell³, Anderson Winkler⁴, Lucrezia Liuzzi⁴, Daniel Pine⁴, Nathan Fox¹
¹*University of Maryland, College Park*, ²*University of South Carolina*, ³*Florida International University*, ⁴*National Institute of Mental Health*

3-062 | A TRANSLATIONAL MODEL FOR REWARD LEARNING: THE TRANSLATIONAL BANDIT TASK (TBT) ELICITS ROBUST REWARD LEARNING BEHAVIOR AND ERP VALUE CODING IN HUMANS

Eric Rawls¹, Caroline Demro¹, Collin D. Teich¹, Angus W. MacDonald III¹, Scott R. Sponheim^{1,2}
¹*University of Minnesota Twin Cities*, ²*Minneapolis VA Healthcare System*

3-064 | FRONTAL MIDLINE THETA INDEXES SUCCESSFUL INHIBITORY CONTROL IN A STRESS-INDUCING GO/NOGO TASK AND IS ASSOCIATED WITH INDIVIDUAL DIFFERENCES IN TRAIT NEGATIVE EMOTIONALITY

Collin D. Teich¹, Craig A. Marquardt², Eric Rawls¹, Kara Stevens^{1,2}, Scott R. Sponheim^{1,2}, Melissa A. Polusny^{1,2,3}
¹*University of Minnesota Twin Cities*, ²*Minneapolis VA Health Care System*, ³*Center for Care Delivery and Outcomes Research*

3-065 | NEURAL MEASURES OF ATTENTION SELECTION AND SUPPRESSION OF EMOTIONAL AND NON-EMOTIONAL STIMULI IN ANXIETY

Katherine McCain¹, Wendy Zhang^{1,2}, Megan Spence¹,
Marisa Krauter¹, Emily Kappenman^{1,2}

¹San Diego State University, ²San Diego State University/
University of California, San Diego

3-066 | CEREBROVASCULAR HEALTH IN AGING: OPTICAL MEASURES PREDICT STRUCTURAL DECLINE

Daniel Bowie, Kathy Low, Benjamin Zimmerman,
Samantha Rubenstein, Gabriele Gratton, Monica Fabiani
University of Illinois, Urbana-Champaign

3-067 | ABSOLUTE REDUCTION IN ELICITING STIMULUS INTENSITY AS A NEW INDEX OF STARTLE PPI

Andreas Behrje¹, Johannes Finke², Terry Blumenthal³,
Hartmut Schächinger¹

¹University of Trier, ²University of Siegen, ³Wake Forest
University

3-068 | INTERGENERATIONAL TRANSMISSION OF THE ERROR-RELATED NEGATIVITY AND ITS LINK WITH GENERALIZED ANXIETY IN A LARGE SAMPLE OF 12-YEAR-OLD CHILDREN

Lyndsey Chong¹, Daniel Klein², Ellen Kessel³,
Alexandria Meyer¹

¹Florida State University, ²Stony Brook University,
³Columbia University

3-069 | SELF-ENHANCEMENT MOTIVATION ATTENUATES THE ERROR-RELATED NEGATIVITY

Esther Robins, James Butterworth, Chengli Huang,
Constantine Sedikides, Nicholas Kelley
University of Southampton

3-071 | CARDIAC SYMPATHETIC INDICES FOR MEASURING AUTONOMIC BALANCE: CHOOSING BETWEEN SYSTOLIC TIME INTERVALS

Patterson Aaron, Elan Donnellan, Kareem Isaac, Foster
Marian, Jules Harrell
Howard University

3-072 | WHAT IF THE VARIABILITY OF SINGLE-TRIAL ERP MEASURES WITHIN A SESSION IS SYSTEMATIC INSTEAD OF RANDOM?

Kyle Wilhelm, Blythe LaGasse, William Gavin, Patricia
Davies
Colorado State University

3-073 | NEURAL CORRELATES OF MOTIVATED ATTENTIONAL PROCESSING IN MOTIVATIONAL CONFLICT

Emma Boyd¹, Timothy McCoy¹, Hilmar Zech²,
Philip Gable¹

¹University of Delaware, ²Technische Universität Dresden

3-074 | CONCUSSION HISTORY IS ASSOCIATED WITH REDUCTIONS IN P3 AMPLITUDE AND INCREASED P3 LATENCY

Ryan Olson, Madalyn Sheridan, Cheyenne Godby,
Payton Smith, Nicholas Magera
University of North Texas

3-075 | RESPIRATORY SINUS ARRHYTHMIA AS A PREDICTOR OF DAILY EMOTION REGULATION

Mary Charleson, Kenneth Safley, Amy Mezulis
Seattle Pacific University

3-076 | BOREDOM AND MOTIVATIONAL CONTROL: INSIGHTS FROM FRONTAL ASYMMETRY?

Micayla Lacey¹, Philip Gable²

¹The University of Alabama, ²University of Delaware

3-078 | ELECTROPHYSIOLOGICAL EFFECTS OF VIBROTACTILE DISCRIMINATION TRAINING OF COMPLEX SOUNDS IN PARTICIPANTS WITH PROFOUND DEAFNESS

Vanessa Ruiz-Stovel, Andrés González-Garrido, Fabiola Gómez-Velázquez, Carlos Soto-Nava, Geisa Gallardo-Moreno
University of Guadalajara

3-079 | VALIDATION OF A WIRELESS AND MOBILE EEG SYSTEM WITH MINIMAL ELECTRODE PREPARATION

Colt Coffman, Matthew Pontifex
Michigan State University

3-080 | EEG AGE-RELATED CHANGES DURING FACIAL PROCESSING IN CHILDREN

Julieta Ramos-Loyo¹, Paola Olguín-Rodríguez^{2,3}, Sara Espinosa-Denenea¹, Luis Llamas-Alonso¹, Sergio Rivera-Tello¹, Markus Müller³
¹University of Guadalajara, ²National Autonomous University of Mexico, ³Autonomous University of Morelos State

3-081 | THE IMPACT OF NARRATIVE AND EMOTIONAL INTENSITY ON SMOKERS' RESPONSES TO ANTI-TOBACCO VIDEOS

Yen-I Lee¹, Di Mu¹, Ashley Churchill², Layne Russell³, Ducan Prettyman⁴, Paul Bolls¹
¹Washington State University, ²NielsenIQ, ³Unaffiliated, ⁴Colorado Technical University

3-082 | ALL AUDIENCES ARE NOT THE SAME: PSYCHOPHYSIOLOGICAL MEASURES ENHANCE TRAFFIC SAFETY VIDEO DEVELOPMENT FOR HIGH AND LOW SENSATION SEEKERS

Marcia Howell¹, Paul Bolls², Anthony Almond³
¹Alaska Injury Prevention Center, ²Washington State University, ³MediaScience

3-083 | COGNITIVE FUNCTION IN ADULTS WHO LIVED AND GREW UP IN AIR-POLLUTED ENVIRONMENT AND ROLE OF AUTONOMIC NERVOUS SYSTEM: THE 4HAIE STUDY

Vera Jandackova, Steriani Elavsky, Daniel Jandacka
University of Ostrava

3-084 | BEING OPEN BUT SHARP: OPENNESS TO EXPERIENCE ASSOCIATED WITH THE VARIATIONS OF THE ONLINE PROCESSING OF CATEGORY-BASED SEMANTIC RELATEDNESS

Bing Li¹, Qiduo Lin¹, Hoi Yan Mak¹, Ovid J.L. Tzeng^{1,2}, Chih-Mao Huang³, Hsu-Wen Huang¹
¹City University of Hong Kong, ²National Taiwan Normal University, ³National Yang Ming Chiao Tung University

3-085 | EFFECTS OF SET SIZE ON THE ELECTROPHYSIOLOGICAL CORRELATES OF SINGLETON DETECTION

Daniel Tay, David McIntyre, John McDonald
Simon Fraser University

3-086 | ISOLATING THE ELECTROPHYSIOLOGICAL CORRELATES OF VISUALLY GUIDED ATTENTION ORIENTING IN HUMANS

John McDonald¹, Daniel Tay¹, David Prime², Steven Hillyard³
¹Simon Fraser University, ²Douglas College, ³University of California, San Diego

3-087 | THE ROLE OF FAMILIARITY AND MEMORY RECOLLECTION IN DECREASING THE CONTINUED INFLUENCE EFFECT OF MISINFORMATION: AN ELECTROPHYSIOLOGICAL INVESTIGATION

Sean Guo, Danni Chen, Xiaoqing Hu
University of Hong Kong

3-088 | SUPERIOR NEGATIVE LEARNING IN HEALTHY OLDER WOMEN WITH LARGER ERROR-RELATED NEGATIVITY AMPLITUDES DURING REINFORCEMENT LEARNING

Christian Otteman, Elizabeth Paitel, Kristy Nielson
Marquette University

3-090 | INTRINSIC FUNCTIONAL CONNECTIVITY BETWEEN THE SALIENCE NETWORK AND LOCUS COERULEUS ASSOCIATED WITH ATTENTION PERFORMANCE

Joshua Neal, Inuk Song, Tae-Ho Lee
Virginia Polytechnic and State University

3-091 | WIN, LOSE OR DRAW: DISSOCIATION AND THE EXPERIENCE OF WIN CONDITIONS

Ellen Yates¹, Wendy D'Andrea¹, Greg Siegle²
¹The New School for Social Research, ²University of Pittsburgh

3-092 | EFFECT OF SECOND LANGUAGE ACQUISITION AGE ON VISUAL WORD PROCESSING

Ricardo Barba-Medina, Fabiola Gómez-Velázquez, Andrés González-Garrido, Vanessa Ruiz-Stovel
University of Guadalajara

3-093 | SYMPATHETIC NERVOUS SYSTEM REACTIVITY DURING INTERPERSONAL CONFLICT AMONG WOMEN IN PARTNER VIOLENT RELATIONSHIPS: THE ROLE OF POSTTRAUMATIC STRESS DISORDER

Darian Reynero, Donald Godfrey, Julia Babcock
University of Houston

3-094 | COGNITIVE LOAD LEADS TO POORER SENSORY ENTRAINMENT

Brendan Huff, Jules Faunce, Bruce Friedman
Virginia Tech

3-096 | ENTRAINMENT ECHO POST-STIMULATION BENEFITS ATTENTIONAL PERFORMANCE

Brian Angus, Jules Alex Faunce, Bruce Friedman
Virginia Tech

3-097 | ASSOCIATION BETWEEN RESTING-STATE EEG MICROSTATES AND COGNITIVE PROCESSES DURING EARLY CHILDHOOD

Armen Bagdasarov, Michael Gaffrey
Duke University

3-098 | THE RELATIONSHIP AMONG MUSICAL TRAINING, PHYSICAL ACTIVITY, AND SENSORY ENTRAINMENT

Brian Angus, Jules Alex Faunce, Bruce Friedman
Virginia Tech

3-099 | CHANGES IN RESTING STATE FUNCTIONAL CONNECTIVITY BEFORE AND AFTER COGNITIVE PROCESSING IN TYPE-1 DIABETES

José Gómez-Barba, Aurora Espinoza-Valdez, Geisa Gallardo-Moreno, Andrés González-Garrido
University of Guadalajara

3-100 | SENSORY ENTRAINMENT NOT AFFECTED BY ATTENTION DEFICIT OR STIMULANT USE

Sonia Warrior, Alex Faunce, Bruce Friedman
Virginia Tech

**3-101 | THE IMPACT OF NEURAL
ENTRAINMENT METRIC ON THE
RELATIONSHIP BETWEEN SENSORY
ENTRAINMENT AND ATTENTION
PERFORMANCE**

Arthur Louie Deapera, Jules Alex Faunce, Bruce
Friedman
Virginia Tech

**3-103 | PRELIMINARY EVALUATION OF THE
UTILITY OF AN APP-BASED SLOW BREATHING
TOOL FOR ASSESSING INTERVENTION
COMPLIANCE IN REAL WORLD SETTINGS**

Neel Muzumdar, Venkatasai Jonna, Marsha Bates,
Jennifer Buckman
Rutgers University

Schedule-at-a-Glance

Wednesday, September 28, 2022

9:00 a.m.-4:30 p.m. PDT, Regency Ballroom E (3rd Floor), **Pre-Conference Workshop #1, Micro ERP Boot Camp** (pre-registration required)

9:00 a.m.-4:30 p.m. PDT, Regency Ballroom D (3rd Floor), **Pre-Conference Workshop #2, Methods for Analyzing Neural Oscillations and Aperiodic Activity** (pre-registration required)

9:00 a.m.-4:30 p.m. PDT, Regency Ballroom F, **Pre-Conference Workshop #3, Multi-Level Modeling Workshop** (pre-registration required)

12:00 p.m.-5:00 p.m. PDT, Grouse (34th Floor), **Board of Directors Meeting**

2:30 p.m.-7:30 p.m. PDT, Regency Ballroom Foyer (3rd Floor), **Registration Open**

5:00 p.m.-6:30 p.m. PDT, Regency Ballroom D (3rd Floor), **Psychophysiology: Using Psychophysiology's Guideline Articles as a Resource and as a Guide for Publishing in the Journal**

5:00 p.m.-8:00 p.m. PDT, Oxford Room (3rd Floor), **Speaker Ready Room Open**

7:00 p.m.-9:00 p.m. PDT, Regency Ballroom C (3rd Floor), **Opening Reception and Poster Session 1**

Thursday, September 29, 2022

7:00 a.m.-6:00 p.m. PDT, Oxford Room (3rd Floor), **Speaker Ready Room Open**

7:30 a.m.-6:30 p.m. PDT, Regency Ballroom Foyer (3rd Floor), **Registration Open**

7:30 a.m.-9:00 a.m. PDT, Tennyson (4th Floor), **Member Enhancement Chair Committee**

8:30 a.m.-10:00 a.m. PDT, Regency Ballroom D (3rd Floor), **Symposium 1.1: STUDYING MOTIVATION – LESSONS FROM TRAITS, STATES AND COGNITIVE CONTROL**

8:30 a.m.-10:00 a.m. PDT, Plaza C (2nd Floor), **Symposium 1.2: LITTLE BRAIN, BIG QUESTIONS: EXAMINATION OF CEREBELLAR ACTIVITY FROM MOVEMENT TO COGNITION AND AFFECT**

8:30 a.m.-10:00 a.m. PDT, Plaza A (2nd Floor), **Symposium 1.3: NON-INVASIVE BRAIN STIMULATION: FROM BASIC MECHANISM TO CLINICAL APPLICATIONS**

8:30 a.m.-10:00 a.m. PDT, Georgia B (2nd Floor), **Big Ideas Session: New Methods in Psychophysiology**

10:00 a.m.-10:30 a.m. PDT, Regency Ballroom C (3rd Floor), **Refreshment Break, Visit the Exhibits**

10:00 a.m.-8:10 p.m. PDT, Regency Ballroom C (3rd Floor), **Exhibits Open**

10:30 a.m.-12:00 p.m. PDT, Regency Ballroom D (3rd Floor), **President's Symposium on Diversity, Representation, and Inclusion**

12:00 p.m.-1:30 p.m. PDT, Grouse (34th Floor), **Early Career Networking Opportunities Conversation Luncheon** (tickets available for \$10 USD)

12:00 p.m.-1:30 p.m. PDT, **2023 Program Committee**, Meet in the Hyatt Hotel's Lobby at 12:00 p.m. PDT

12:00 p.m.-1:30 p.m. PDT, **Lunch Break** (on your own)

1:30 p.m.-1:35 p.m. PDT, Regency Ballroom D (3rd Floor), **Opening Remarks**, Markus Ullsperger

1:35 p.m.-2:35 p.m. PDT, Regency Ballroom D (3rd Floor), **Invited Address, Interpreting the Mechanisms and Meaning of Human MEG/EEG Signals with the Human Neocortical Neurosolver Software**, Stephanie R. Jones

2:35 p.m.-3:00 p.m. PDT, Regency Ballroom C (3rd Floor), **Refreshment Break and Exhibit Time**

3:00 p.m.-4:30 p.m. PDT, Regency Ballroom D (3rd Floor), **Symposium 2.1: DISENTANGLING MULTIPLEXED CONTRIBUTIONS TO ERROR AND REWARD PROCESSING ALTERATIONS IN PSYCHIATRY**

3:00 p.m.-4:30 p.m. PDT, Plaza A (2nd Floor), **Symposium 2.2: SPEECH-IN-NOISE COMPREHENSION THROUGH LIFESPAN: NEW ADVANCES FROM COGNITIVE NEUROSCIENCE**

3:00 p.m.-4:30 p.m. PDT, Plaza C (2nd Floor), **Symposium 2.3: PSYCHOPHYSIOLOGY IN NONHUMAN PRIMATES AS A TRANSLATIONAL BRIDGE**

3:00 p.m.-4:30 p.m. PDT, Georgia B (2nd Floor), **Symposium 2.4: USING INTERNATIONAL, CROSS-LABORATORY COLLABORATIONS TO ADVANCE NEUROSCIENTIFIC METHODOLOGY**

4:30 p.m.-4:40 p.m. PDT, **Break**

4:40 p.m.-6:10 p.m. PDT, Regency Ballroom D (3rd Floor), **Symposium 3.1: NEURAL SIGNATURES OF EMOTION PROCESSING AND REGULATION AND THEIR ROLE IN PSYCHOPATHOLOGY**

4:40 p.m.-6:10 p.m. PDT, Plaza A (2nd Floor), **Symposium 3.2: FEAR AND LOATHING IN VR: PSYCHOPHYSIOLOGICAL FEAR AND ANXIETY RESPONSES IN VIRTUAL REALITY**

4:40 p.m.-6:10 p.m. PDT, Georgia B (2nd Floor), **Symposium 3.3: LEARNING AND CONTROL OF TASK REPRESENTATIONS: EVIDENCE FROM BEHAVIORAL, NEUROMODULATION, AND MULTIMODAL NEUROIMAGING STUDIES**

6:10 p.m.-8:10 p.m. PDT, Regency Ballroom C (3rd Floor), **Poster Session 2**

8:00 p.m.-9:00 p.m., Tennyson (4th Floor), **Education and Training Committee**

8:30 p.m. PDT, **Past Presidents Dinner** (by invitation), Meet in the Hyatt Hotel's Lobby at 8:15 p.m. PDT

Friday, September 30, 2022

7:00 a.m.-6:00 p.m. PDT, Oxford Room (3rd Floor), **Speaker Ready Room**

7:30 a.m.-8:30 a.m., Tennyson (4th Floor), **Diversity and Outreach Committee**

8:00 a.m.-6:30 p.m. PDT, Regency Ballroom Foyer (3rd Floor), **Registration Open**

8:30 a.m.-10:00 a.m. PDT, Regency Ballroom D (3rd Floor), **Faces of the Future Flash Talks**

10:00 a.m.-10:30 a.m. PDT, Regency Ballroom C (3rd Floor), **Refreshment Break**

10:00 a.m.-8:00 p.m. PDT, Regency Ballroom C (3rd Floor), **Exhibits Open**

10:30 a.m.-11:30 a.m. PDT, Regency Ballroom D (3rd Floor), **Invited Address, Reflections on Cortico-Subcortico-Cortical Circuitry in Action, Perception, and Cognition**, Sonja A. Kotz

11:30 a.m.-1:00 p.m. PDT, **Lunch Break** (on your own)

11:30 a.m.-1:00 p.m. PDT, **2022 Program Committee**, Meet in the Hyatt Hotel's Lobby at 11:30 a.m. PDT

11:30 a.m.-1:00 p.m., **Virtual Poster Session**

1:00 p.m.-2:30 p.m. PDT, Regency Ballroom D (3rd Floor), **Symposium 4.1: THE ROLE OF CEREBROVASCULAR RISK FACTORS IN COGNITIVE, ANATOMICAL, AND FUNCTIONAL BRAIN AGING**

1:00 p.m.-2:30 p.m. PDT, Georgia B (2nd Floor), **Symposium 4.2: FROM BENCH TO BEDSIDE: ADVANCEMENTS IN QUANTIFYING AND MODULATING NEURAL CIRCUIT DYSFUNCTION IN SUBSTANCE USE DISORDERS**

1:00 p.m.-2:30 p.m. PDT, Plaza A (2nd Floor), **Big Idea Session: Psychophysiology of Cognitive Control and Executive Functions**

2:30 p.m.-3:00 p.m. PDT, Regency Ballroom C (3rd Floor), **Refreshment Break, Visit the Exhibits**

3:00 p.m.-4:30 p.m. PDT, Regency Ballroom D (3rd Floor), **Presidential Symposium: Transcranial Focused Ultrasound Neuromodulation: A Novel Tool in Psychophysiology**

4:30 p.m.-5:30 p.m. PDT, Regency Ballroom D (3rd Floor), **Invited Address, Probing the Role of the Cerebellum in Sensorimotor Learning and Cognition**, Rich Ivry

6:00 p.m.-8:00 p.m. PDT, Regency Ballroom C (3rd Floor), **Poster Session 3**

8:00 p.m.-9:00 p.m. PDT, Turner (4th Floor), **Student Poster Award Judges Meeting**

8:00 p.m.-9:30 p.m. PDT, Tennyson (4th Floor), **Committee to Promote Student Interests Meeting**

10:00 p.m. PDT, **Fable Diner and Bar (755 Richards Street)**

Saturday, October 1, 2022

8:30 a.m.-10:00 a.m. PDT, Georgia B, Symposium **5.1: MULTIMODAL SOCIO-EMOTIONAL COMMUNICATION: BASIC MECHANISMS AND FUNCTIONING IN ALTERED SENSORY AND CENTRAL CONDITIONS**

8:30 a.m.-10:00 a.m. PDT, Regency Ballroom D (3rd Floor), **Symposium 5.2: PRECISION MODULATION OF ANXIETY AND MOOD DISORDER-RELEVANT BEHAVIORS USING NEUROSTIMULATION: WHAT CAN NEUROPHYSIOLOGY TELL US**

8:30 a.m.-10:00 a.m. PDT, Plaza A (2nd Floor), **Symposium 5.3: TRANSDIAGNOSTIC NEUROCOGNITIVE MECHANISMS RELATED TO THREAT UNCERTAINTY AND EXTINCTION**

10:00 a.m.-10:30 a.m. PDT, Regency Ballroom Foyer (3rd Floor), **Refreshment Break**

10:30 a.m.-11:30 a.m. PDT, Regency Ballroom D (3rd Floor), **Presidential Address 2022, Beyond Peaks and Troughs: Multiplexed Performance Monitoring Signals in the EEG**, Markus Ullsperger

11:30 a.m.-12:30 p.m. PDT, Regency Ballroom D (3rd Floor), **Presidential Address 2020-21: Salience and Cognitive Control: Inter- and Intraindividual Differences and Implications for Social and Clinical Behavior**, Bruce D. Bartholow

12:45 p.m.-3:00 p.m. PDT, Regency Ballroom C (3rd Floor), **SPR Business Meeting and Awards Luncheon** (\$10 separate fee for members and non-members; free to students if they register in advance)

3:15 p.m.-3:45 p.m. PDT, Regency Ballroom D (3rd Floor), **Early Career Award Address: The Role of ERPs in Psychological Science: Past, Present, and Future**, Emily S. Kappenman

3:45 p.m.-4:15 p.m. PDT, Regency Ballroom D (3rd Floor), **Disengaged: The Significance of Blunted LPPs Across Psychiatric Health and Disease**, Annmarie MacNamara

4:15 p.m.-4:45 p.m. PDT, Regency Ballroom D (3rd Floor), **Early Career Award Address, Static and Dynamic Markers of Affect Regulation: Integrating Psychophysiological Indices Across Time and Contexts**, Jonathan P. Stange.

9:00 p.m. PDT, Regency Ballroom C (3rd Floor), **Saturday Night Social**

Sunday, October 2, 2022

9:00 a.m.-12:00 p.m. PDT, Regency Ballroom B (3rd Floor), **Board of Directors Meeting**